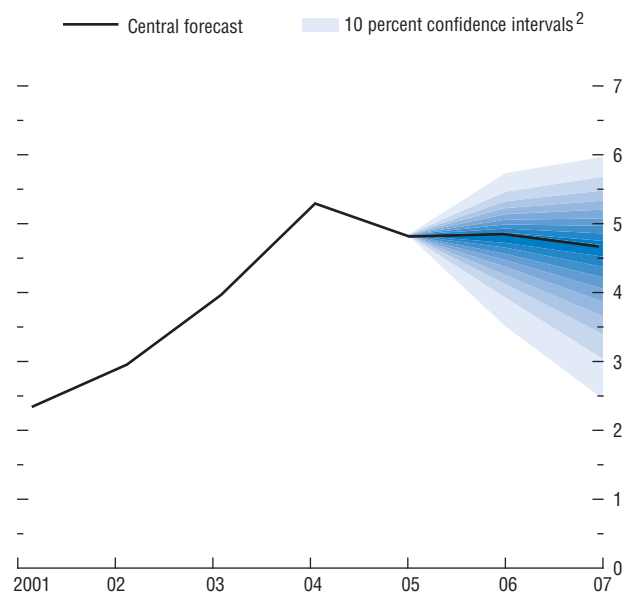


Figure 1.1. Prospects for World GDP Growth¹ (Percent)

Global growth is projected to remain about 4½ percent in 2006 and 2007, but the risks are slanted to the downside, the more so as time progresses (see text for a detailed discussion).



Source: IMF staff estimates.

¹This so-called fan chart shows the uncertainty around the *World Economic Outlook* central forecast with the 90 percent probability interval. See Box 1.3 for details.

²Shaded areas of the same gradient above and below the central forecast add up to 10 percent.