

Real Estate Prices—Availability, Importance, and New Developments

Second IMF Statistical Forum: Statistics for Policymaking—Identifying Macroeconomic and Financial Vulnerabilities

Washington, DC
November, 18–19, 2014

Mick Silver¹

**Principal Statistical Methodologist
Statistics Department
International Monetary Fund
msilver@imf.org**

¹ The views expressed herein are those of the author and should not necessarily be attributed to the IMF, its Executive Board, or its management.

I. INTRODUCTION

Macroeconomists and central banks need measures of residential property price inflation. They need to identify bubbles, the factors that drive them, instruments that contain them, and to analyze their relation to recessions.² Timely, comparable, proper measurement is a prerequisite for all of this, driven by concomitant data.

There have been major advances in this area foremost of which are: (i) recently developed international standards on methodology, the Eurostat *et al.* (2103) *Handbook on Residential Property Price Indices*;³ (ii) an impressive array of data hubs dedicated to the dissemination of house price indices and related series including the IMF's Global Housing Watch; the Bank for International Settlements' (BIS) Residential Property Price Statistics; the OECD Data Portal; the Federal Reserve Bank of Dallas' International House Price Database; Eurostat Experimental House Price Indices; and private sources;⁴ and (iii) encouragement in compiling and disseminating such measures: real estate price indexes are included as Recommendation 19 of the G-20 Data Gaps Initiative (DGI), and residential property price indexes prescribed within the list of IMF Financial Soundness Indicators (FSIs), in turn included in the IMF's new tier of data standards, the Special Data Dissemination Standard (SDDS) Plus.⁵ In this presentation we identify the challenges countries face in the hard problem of measuring residential property (hereafter "house") price indexes (HPIs). The presentation focuses on three areas:⁶

In section 1 we consider some measurement issues making use of country illustrations. Compilers of HPIs are at the mercy of the limitations of data sources available to them, in terms of coverage, timeliness and methodologies they can enable, at least in the short-

² For salient papers see the recent Conference by Deutsche Bundesbank, the German Research Foundation (DFG) and the International Monetary Fund on "Housing markets and the macroeconomy: challenges for monetary policy and financial stability" at:

http://www.bundesbank.de/Redaktion/EN/Termine/Research_centre/2014/2014_06_05_eltville.html

³ http://epp.eurostat.ec.europa.eu/portal/page/portal/hicp/methodology/hps/rppi_handbook.

⁴ The IMF's Global Housing Watch provides current data on house prices for 52 countries as well as metrics used to assess valuation in housing markets, such as house price-to-rent and house-price-to-income ratios: <http://www.imf.org/external/research/housing/>; the BIS has extensive country series on HPIs along with details of, and links to, country metadata and source data: <http://www.bis.org/statistics/pp.htm>; OECD also disseminates country house price statistics and is developing a wide range of complementary housing statistics: <http://www.oecd.org/statistics/>; the Federal Reserve Bank of Dallas' International House Price Database, Mack and Martínez-García (2011), at: <http://www.dallasfed.org/institute/houseprice/index.cfm>; and Eurostat Experimental House Price Indices at: http://appsso.eurostat.ec.europa.eu/nui/show.do?dataset=prc_hpi_q&lang=en.

⁵ The setting of such standards is a key element of Recommendation 19 of the report: *The Financial Crisis and Information Gaps*, endorsed at the meeting of the G-20 Finance Ministers and Central Bank Governors on November 7, 2009; see Heath (2013) for details of SDDS Plus and the DGI and <http://fsi.imf.org/> for FSIs under "concepts and definitions."

⁶ We draw on Silver (2011, 2012, and 2013) and Silver and Graf (2014).

medium term. Our country illustrations show how differences in data sources, coverage and methods can seriously impact on country HPI measurement. A theme of section 1 is that compilers of official statistics can, with some patience and effort, make their own luck and such a strategy is illustrated.

Section 2 examines, using a more formal approach, the empirical question as to whether measurement and coverage differences matter and the extent to which they matter as we go into recession, when it matters. The importance of measurement in modeling house price inflation is also investigated.

Section 3 turns to the similar, though very much harder, measurement area of commercial property price indexes (CPPIs): the elephant in the room. In this case, especially in the lead up to and during recessions, there is sparse data on very heterogeneous properties—apartments, industrial, office and retail. We briefly outline issues and some measurement devices that apply to specific statistical problems as illustrations of the complexity of work in this underdeveloped area.

II. THE HARD PROBLEM OF PROPERLY MEASURING HPIS

A. The problem

HPIS are particularly prone to methodological differences, which can undermine both within-country and cross-country analysis. It is a difficult but important area.

Critical to price index measurement is the need to compare like transaction prices of representative goods and services, in successive periods, with like. Price index measurement for consumer, producer and export and import price indexes (CPI, PPI and XMPIS) largely rely on the *matched-models method*. The detailed specification of one or more representative brand is selected as a high-volume seller in an outlet, for example a single 330 ml. can of regular *Coca Cola*, and its price recorded. The outlet is then revisited in subsequent months and the price of the self-same item recorded and a geometric averages of its price and those of similar such specifications in other outlets form the building blocks of a CPI. There may be problems of temporarily missing prices, quality change, say size of can or sold as a bundled part of an offer if bought in bulk, but essentially the price of like is compared with like every month. HPIS are much harder to measure.⁷

First, there are no transaction prices every month/quarter on the same property. HPIS have to be compiled from **infrequent transactions on heterogeneous properties**. A higher proportion of more expensive houses sold in one quarter should not manifest itself as a measured price increase, and vice versa. There is a need in measurement to control for changes in the quality of houses sold, a non-trivial task.

⁷ International manuals on all of these indexes can be found at under “Manuals and Guides/Real Sector” at: <http://www.imf.org/external/data.htm#guide>. This site includes the *CPI Manual: International Labour Office et al.* (2004).

The main methods of quality adjustment are hedonic regressions, repeat sales data only, and mix-adjustment by weighting detailed homogeneous strata, and the sales price appraisal ratio (SPAR).⁸ The method selected depends on the database used. There needs to be details of salient price-determining characteristics for hedonic regressions, a relatively large sample of transactions for repeat sales, and good quality appraisal information for SPAR. In the US, for example, price comparisons of repeat sales are mainly used, akin to the like-with-like comparisons of the matched models method, Shiller (1991). There may be bias from not taking full account of depreciation and refurbishment between sales and selectivity bias in only using repeat sales and excluding new home purchases. However, the use of repeat sales does not require data on quality characteristics and controls for some immeasurable characteristics that are difficult to effectively include in hedonic regressions, such as a desirable or otherwise view.

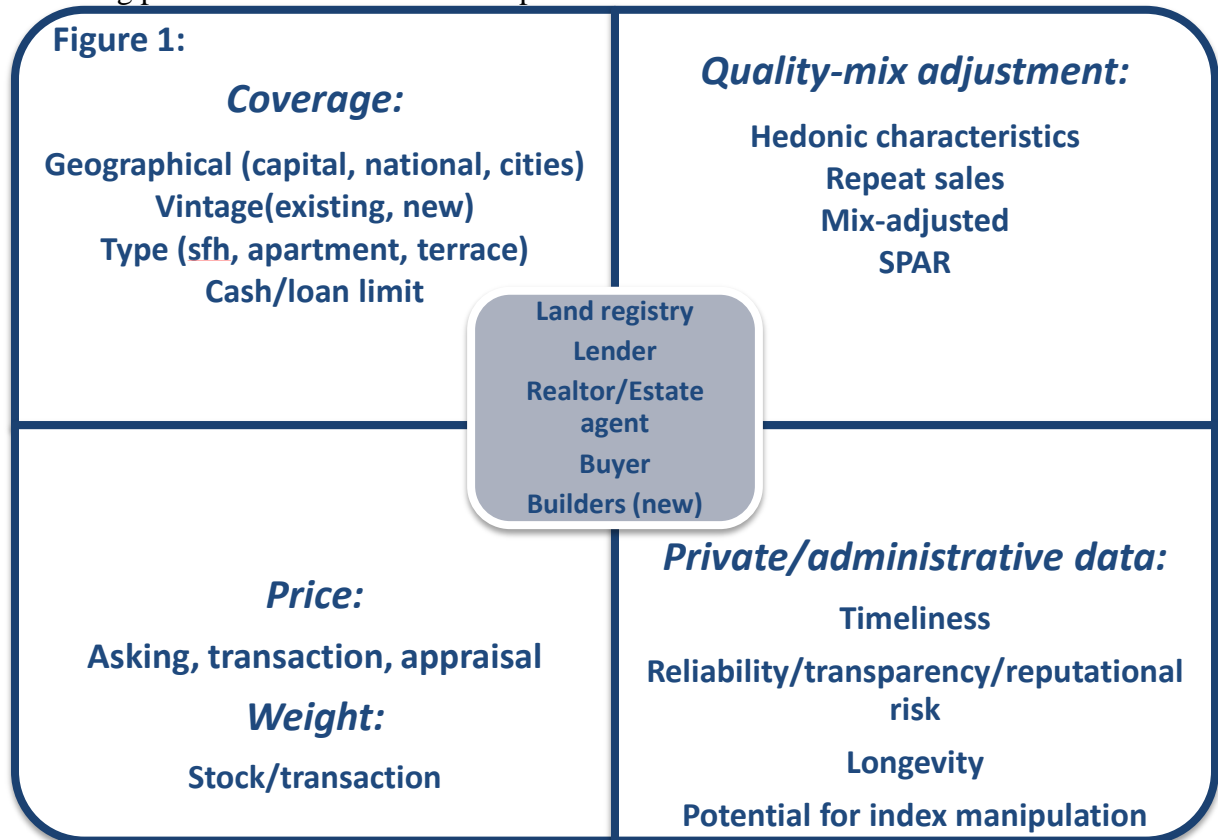
Second, the **data sources are generally secondary sources that are not tailor-made by the national statistical offices (NSIs)**, but collected by third parties, including the land registry/notaries, lenders, realtors (estate agents), and builders. An exception is the use of buyer's surveys in Japan. The adequacy of these sources to a large extent depends on a country's institutional and financial arrangements for purchasing a house and vary between countries in terms of timeliness, coverage (type, vintage, and geographical), price (asking, completion, transaction), method of quality-mix adjustment (repeat sales, hedonic regression, SPAR, square meter) and reliability; pros and cons will vary within and between countries. In the short-medium run users are dependent on series that have grown up to publicize institutions, such as lenders and realtors, as well as to inform. Metadata may be far from satisfactory.

We stress that our concern here is with measuring HPIs for FSIs and macroeconomic analysis where the transaction price, that includes structures and land, is of interest. However, for the purpose of national accounts and analysis based thereon, such as productivity, there is a need to both separate the price changes of land from structures and undertake a quality change on structures. This is far more complex since separate data on land and structures is not available when a transaction of a property takes place. Diewert, de Haan, and Hendriks (2011) and Diewert and Shimizu (2013a) tackle this difficult problem.

Figure 1 shows alternative data sources in its center and coverage, methods for adjusting for quality mix, nature of the price, and reliability in the four quadrants. Land registry data, for example, may have an excellent coverage of transaction prices, but have relatively few quality characteristics for an effective use of hedonic regressions, not be timely, and have a poor reputation. Lender data may have a biased coverage to certain regions, types of loans, exclude cash sales, have "completion" (of loan) price that may differ from transaction price, but have data on characteristics for hedonic quality adjustment. Realtor data may have good coverage, aside from new houses, data on characteristics for hedonic quality adjustment, but

⁸ Details of all these methods are given in the Eurostat et al. (2013); see Hill (2013) for a survey of hedonic methods for residential property price indexes; Silver and Heravi (2007) and Diewert, Heravi, and Silver (2008) on hedonic methods; Diewert and Shimizu (2013b) for an application to Tokyo; and on repeat-sales methodology, Shiller (1991, 1993, and 2014).

use asking prices rather than transaction prices.



The length of time between asking and transaction will vary between countries, depending on the institutional arrangements for buying and selling a house, and with the economic cycle of a country.

B. Country illustrations⁹

Figure 2 shows a feast of HPIs available for the UK including the ONS (UK, hedonic mix-adjusted, completion price); Nationwide and Halifax (both UK, hedonic, own mortgage approvals, mortgage offer price; Halifax weights); the E&W Land Registry (E&W, repeat sales, all transaction prices); LSL Acadata E&W HPI (E&W, mix-adjusted with forecasts, all transaction prices);¹⁰ and the ONS Median price index unadjusted for quality mix— given for

⁹ Data are generally sourced from: <http://www.bis.org/statistics/pp.htm> use also being made of: <http://www.acadata.co.uk/acadHousePrices.php>; <http://www.ons.gov.uk/ons/rel/hpi/house-price-index/july-2014/stb-july-2014.html>; <http://us.spindices.com/index-family/real-estate/sp-case-shiller>; <http://www.fhfa.gov/KeyTopics/Pages/House-Price-Index.aspx>; and <http://www.fipe.org.br/web/index.asp?aspx=/web/indices/FIPEZAP/index.aspx>.

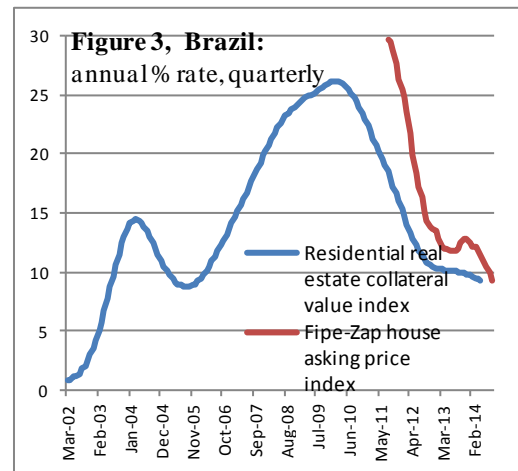
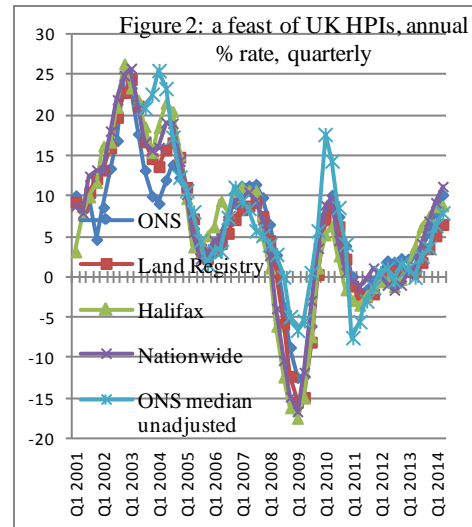
¹⁰ Acadata use a purpose built “index of indices” forecasting methodology to help “resolve” the problem that only 38 percent of sales are promptly reported to Land Registry, considered by Acadata to be an insufficient sample to be definitive. The LSL Acad HPI “forecast” is updated monthly until every transaction is included.

(continued)

comparison.¹¹ [Maybe expand to include all 9: a realtor, Rightmove. Rightmove measured 139,282 asking prices advertised on Rightmove.co.uk, about 90 percent of the UK market]. Measured inflation in 2008Q4 coming into the trough was -8.7 (ONS) - 12.3 (Land registry) -16.2 (Halifax) -14.8 (Nationwide); and -4.9 (ONS Median unadjusted (for quality mix change); methodology and data source matter.

In contrast Figure 3 shows a famine for Brazil with two HPIs: *Banco Central do Brasil* “Measures the long term trend. It uses individual loan collateral appraisal data to construct series of median house values. These median house appraisals series are filtered using a HP filter,” and the *FipeZap Index* of over 100,000 (January 2012) monthly advertised prices of apartments; the index is a weighted (2000 Census shares in total income) average of median asking prices of 64 cells (16 regions and 4 bedroom sizes)—where the cell size is insufficient, the previous price is carried forward. Neither of which measure up to the concepts and standards of the *RPPI Handbook*, but have prompted the Brazilian authorities to make their own luck.

Figure 4 shows HPIs available in the US including the: CoreLogic, Federal Housing Finance Agency (FHFA) purchases-only, Census Bureau’s Constant Quality House Price Index (CQHPI) Case-Shiller, and the FHFA expanded-data HPI. CoreLogic, FHFA, and Case-Shiller, the three primary HPIs in the US, use repeat sales for quality-mix adjustment—the Census Bureau is a (hedonic) new houses only index based on a limited sample. The FHFA expanded-data HPI includes, in addition to purchases-only transactions price information from Fannie Mae and Freddie Mac mortgages, transactions records for houses with mortgages endorsed by the Federal Housing Administration (FHA) and county recorder data licensed from CoreLogic, appropriately re-weighted to ensure there is no undue urban over rural bias. This change in source data coverage accounted for the 4.6 percentage point difference in 2008 Q4 between the annual

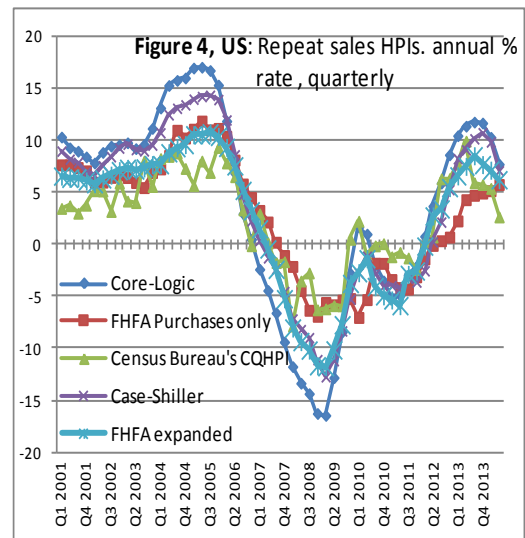


Effectively, an October LSL Acad E&W HPI “final” result, published with the December LSL Acad HPI “forecast” is definitive.

¹¹ A detailed account of the methodologies and source data underlying these HPIs for the UK is given in Matheson (2010), Carless (2013), and ONS (2013); see also <http://www.ons.gov.uk/ons/guide-method/user-guidance/prices/hpi/index.html>.

quarterly HPI respective falls of 16.26 and 11.66 percent for the FHFA “All Purchases” and “Expanded-Data” FHFA HPIs. Coverage limited to particular types of mortgages matter.

Leventis (2008) decomposed into methodological and coverage differences the average difference between the FHFA (then Office of Federal Housing Enterprise Oversight (OFHEO)) and S&P/Case-Shiller HPIs, covering 10 matched metropolitan areas, for the four-quarter price changes over 2006Q3-2007Q3. Among his findings was that of the overall 4.27 percent average difference, FHFA’s use of a more muted down-weighting of larger differences in the lags between repeat sales,¹² than use in Case-Shiller, accounts for an incremental 1.17 percent of the difference. It is not just that use of different quality-mix adjustment methods matter, it is also the manner in which a method is applied matters.



C. Making your own luck

There is no need to simply accept data sources with associated problems; you can make your own luck. France benefited from the combination of a research-based central statistical agency and a monopolistic network of notaries, 4,600 in 2009. Notaries in France verify the existence of property rights, draft the legal sale contract and deed, send the records to the Mortgage Register (Conservation des Hypothèques), collect the stamp duty on behalf of the government, and send the transaction price to the tax authorities. Up to the end of the 1990s, only the “Notaires-INSEE” 1983 apartments’ index for the city of Paris was based on such data, though it was not quality-mix adjusted.¹³ In 1997, the National Union of Notaries, (Conseil Supérieur du Notariat, CSN) and INSEE, decided to create a price index for dwellings located outside the Paris region, in the so-called Province. INSEE provided the (hedonic) technical framework. The notaries collect the data and compute the indexes at their own cost. Gouriéroux and Laferrère (2009, page 208) note that as of 2009, most contracts are

¹² The S&P/Case-Shiller methodology materials suggest that its down-weighting is far more modest than FHFA. Over longer time periods, evidence suggests that there is greater dispersion in appreciation rates across homes. This variability causes heteroskedasticity, which increases estimation imprecision. The down-weighting mitigates the effect of the heteroskedasticity. Leventis (2008, page 3) notes that the S&P/Case-Shiller methodology materials suggest valuation pairs, which reflect the extent to which homes have appreciated or depreciated over a known time period, are given 20-45 percent less weight when the valuations occur ten years apart vis-à-vis when they are only six months apart. By contrast, OFHEO’s down-weighting tends to give ten-year pairs about 75 percent less weight than valuation pairs with a two-quarter interval. Differences in filters and coverage of qualifying loans (FHFA) account for much of the rest.

¹³ The ‘Notaires-INSEE’ stratified quarterly index (without quality adjustment) had been computed since 1983 for second-hand apartments in Paris. INSEE defined 72 strata and provided weights from the Population Census; the index was computed by the Chambre Interdépartementale des Notaires Parisiens (CINP), the Parisian branch of the notaries.

still paper documents, and they are not written in the same fashion all over the country. The information must be standardized and coded. Each of the notaries is asked to send for key-boarding an extract or a photocopy of the sale deed, plus some extra information on the dwelling characteristics.

Currently, for Paris and separately for the Provinces,¹⁴ there are hedonic quality-mix adjusted HPIs for apartments and houses by about 300 zones comparing transaction prices of fixed bundles of observed characteristics. The hedonic coefficients are now updated every 2 years—previously 5 years—and weights chain-linked (Gouriéroux and Laferrère, 2009).¹⁵

The United Kingdom Office for National Statistics (ONS) in wanting to develop an independent official HPI. The then existing main HPIs were compiled from their own loan information by two major building societies. The ONS index started in 1969 from a 5 percent sample of mortgage transactions from a “...a number of building societies.” From 1993 the coverage was extended to include all mortgage lenders—between 1993 and 2002 a monthly sample of 2–3,000 transactions. In 2003 the 5 percent sample from each lender increased to 100 percent; from mid-2003 to August 2005 the sample was of about 25,000 monthly mortgage completions, increasing by end-of 2005 to about 40,000, through 2006 to 2007 to about 50,000 from, in 2007, 60 main lenders. There was then some fall-off with the recession: in the six months to May 2010, the sample of 23,000 transactions per month was from 32 lenders. In 2011: the sample included 65-70 percent of all completions. Pre-2003 mix-adjustment used a potential of 300 cells; post-2003: 100,000 cells.

III. MORE FORMALLY: DOES MEASUREMENT MATTER AND HOW?

HPI measurement differences may arise from: (i) the method of enabling constant quality measures for this average (repeat sales pricing, hedonic approach, mix-adjustment through stratification, sale price appraisal ratio (SPAR); (ii) type of prices (asking, transaction, appraisal); (iii) use of stocks or flows (transactions) for weights; (iv) use of values or quantities for weights; (v) use of fixed or chained weights; aggregation procedure; (v) geographical coverage (capital city, urban etc.), (vii) coverage by type of housing (single family house, apartment etc.); (viii) vintage, new or existing property.

¹⁴ The existing properties HPI for Île-de-France are calculated by the company Paris Notaires Services (PNS) and INSEE using property transaction data contained in the BIEN (Notarial Economic DataBase) database, which belongs to and is managed by PNS and funded by notaries from Île-de-France. The existing properties HPI for the provinces are calculated by the company Perval and INSEE using data from property transactions contained in the Perval database and funded by notaries from the provinces. Gouriéroux and Laferrère (2009) note that together they included some 6 million housing transactions at the end of 2008, with 30 percent of the transactions in the Ile-de- France, and 70 percent in the Province. The existing properties HPI for the whole of Metropolitan France are calculated by the company Parvel and INSEE using data from property transactions contained in the data bases managed by Perval and PNS.

¹⁵ Data are available at <http://www.bdm.insee.fr/bdm2/choixCriteres?codeGroupe=1292>; methodology at <http://www.bdm.insee.fr/bdm2/documentationGroupe?codeGroupe=1292> and Gouriéroux and Laferrère, (2009).

IV. AN EMPIRICAL EXERCISE

A. More formally: does measurement matter?

Silver (2012) collected 157 HPIs from 2005:Q1 to 2010:Q1 from 24 countries with, for each HPI, explanatory measurement and coverage variables (details are given in Annex 1 of Silver (2012)).¹⁶ The explanatory measurement variables were:

Based on coverage:

- **Vintage** (benchmarked on *both* new and existing dwellings).
New (newly constructed dwelling)=1 (0 otherwise); **Xsting** (existing dwelling) =1(0 otherwise).
- **Geographical coverage** (benchmarked on *national* coverage).
Capital (major) city=1 (0 otherwise); **Big cities**=1 (0 otherwise); **Urban** areas=1 (0 otherwise); **Notcapital**=1 (0 otherwise); **Rural**=1 (0 otherwise).
- **Type of dwelling** (benchmarked on *both* apartments and single-family homes).
Apartment=1 (0 otherwise); Single family home (**Sfh**)=1 (0 otherwise).

Based on method:

- **Quality-mix adjustment** (benchmarked on *price per dwelling*, no adjustment).
Hedonic regression-based=1 (0 otherwise); **Repeat** sales=1 (0 otherwise); **SPAR**=1 (0 otherwise); **MixAdjust**=1 (0 otherwise); **SqMeter**=1 (0 otherwise)
- **Type of price** (benchmarked on *transaction price*).
Asking price =1 (0 otherwise); Tax/mortgage **Appraisal** price=1 (0 otherwise).
- **Weights: as a flow of sales transactions or stock** (benchmarked on *sales*=0).
Wstock=1 (0 otherwise).
- **Weights: quantity or value or other shares** (benchmarked on *value*=0).
Wquantity=1 (0 otherwise); **Wsqmeter**=1(0 otherwise); **Wpopulation**=1(0 otherwise); **Wprice** in base-period =1(0 otherwise).
- **Weights: fixed or chained/regularly-updated or unweighted** (benchmarked on *fixed*=0).

The above panel data had fixed time and fixed country effects; the estimated coefficients on the explanatory measurement variables were first held fixed and then relaxed to be time varying. Subsequently, the explanatory variables were interacted with the country dummies. First, Table 1 shows the regressions to have substantial explanatory power, \bar{R}^2 , at about 0.45 in mid-2009, a result especially notable given only fixed effects, and measurement variables were included. There were no structural explanatory variables to explain house price inflation by means of supply and demand (and financing) of a country's housing market as in, for

¹⁶ Information on the characteristics of the house price indexes was based on the methodological notes attached to the source data, survey papers, and, often, extensive email correspondence with the providing institutions. The HPIs were from: national (official and private) sources and the BIS Residential Property Price database, <http://www.bis.org/statistics/pp.htm>.

example, Muellbauer and Murphy (2008).¹⁷ From the results of Table 2, column 2, measurement matters and, in particular, \bar{R}^2 increases over the period of recession, when it really matters.

Table 1, Fit of measurement variables in moving window regression						
	RbarSq including:					
	Time; Country;	Country;		Measurement.		
	Measurement	Measurement	Measurement	Coverage	Methodology	
05 Q1	0.322	0.211	0.102	0.015	0.079	
05 Q2	0.253	0.242	0.120	0.016	0.099	
05 Q3	0.282	0.273	0.126	0.023	0.099	
05 Q4	0.330	0.324	0.148	0.083	0.114	
06 Q1	0.365	0.358	0.120	0.025	0.100	
06 Q2	0.416	0.409	0.103	0.004	0.090	
06 Q3	0.347	0.343	0.085	0.003	0.081	
06 Q4	0.286	0.282	0.070	0.003	0.069	
07 Q1	0.266	0.265	0.077	0.009	0.075	
07 Q2	0.182	0.177	0.100	0.051	0.095	
07 Q3	0.181	0.175	0.110	0.066	0.093	
07 Q4	0.193	0.193	0.110	0.074	0.081	
08 Q1	0.264	0.254	0.153	0.101	0.116	
08 Q2	0.303	0.281	0.195	0.129	0.146	
08 Q3	0.343	0.324	0.234	0.128	0.194	
08 Q4	0.358	0.342	0.216	0.114	0.164	
09 Q1	0.405	0.369	0.228	0.118	0.174	
09 Q2	0.445	0.408	0.267	0.158	0.211	
09 Q3	0.456	0.444	0.257	0.137	0.194	
09 Q4	0.401	0.397	0.175	0.068	0.087	
10 Q1*	0.413	0.415	0.099	0.020	0.051	
Figures are for 5-quarters' moving (by one quarter) window regressions appropriately centered. Figures for 2009:Q4 and for 2010:Q1 are based on regressions over 2009Q2-2010:Q1 and 2009Q4-2010:Q1 respectively.						
*The RbarSq are very similar for 2010Q1 for the first two columns, with and without the time dummies. The degrees of freedom adjustment is responsible for the latter exceeding the former.						

Second, Table 1 also shows the explanatory power of the model is not substantively driven by the fixed **time** and **cou** effects. On excluding the country- and time-fixed effects, Table 2

¹⁷ The paper finds the main drivers of house prices to include income, the housing stock, demography, credit availability, interest rates, and lagged appreciation.

column 4, the effect of the measurement variables alone, while diminished, accounted during the recession for about a quarter of the variation in house price inflation rates.

Third, is the question: given that measurement matters, what matters most, coverage variables or methodological variables? Table 1, columns 5 and 6 find that dropping either set leaves the other with substantial explanatory power, though “method” is for the large part slightly more important than “coverage.”¹⁸

Figure 5 illustrate the nature, magnitude and volatility of individual regression coefficients over time for six illustrative explanatory variables: the coverage of existing properties (as against new and existing); use of stratified mix-adjustment (as against price per dwelling); hedonic regressions (as against price per dwelling); price per sq. meter (as against per dwelling); unweighted or equal weights (as against value shares), appraisal (as against transaction) price data. A lighter-fill marker in Figure 5 indicates that the coefficient’s value is statistically significant at a 5 percent level. The general pattern is one of a substantively different (lower) effect of these variables on measured inflation during the recession compared with prior to it. There is, in some cases, a marked volatility to the effects of these variables, as illustrated in Figure 5 for the use of appraisal prices as against transaction prices.

Having shown that measurement issues matter when comparing HPIs, and that they matter particularly during the recession—when it matters—we turn to a consideration of the impact of these findings on some macroeconomic analytical work.

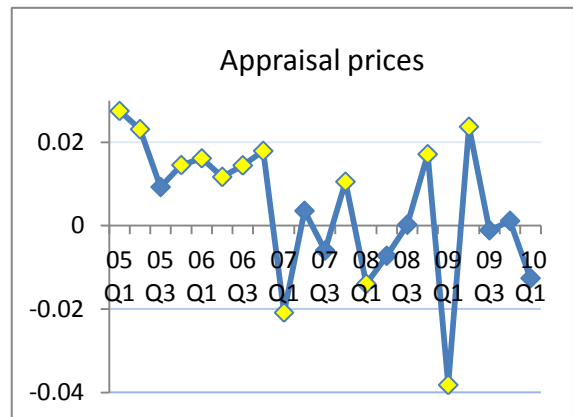
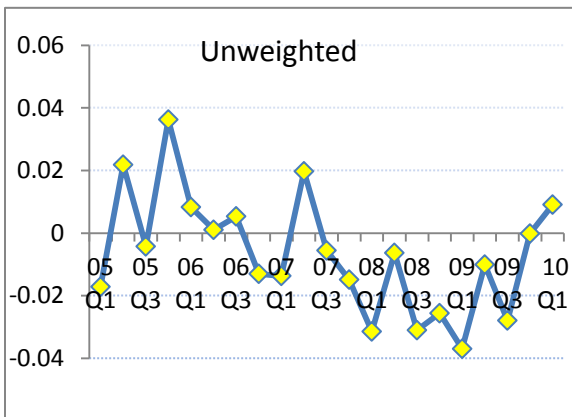
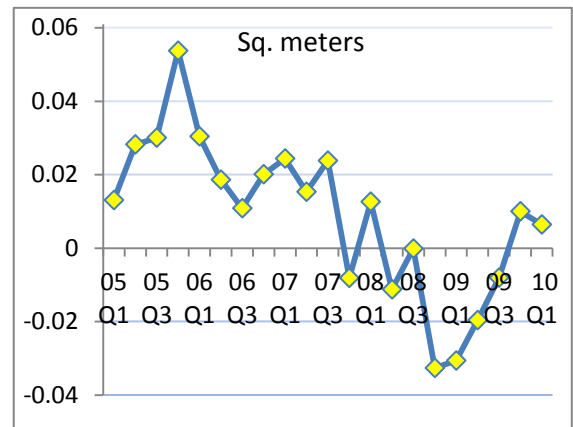
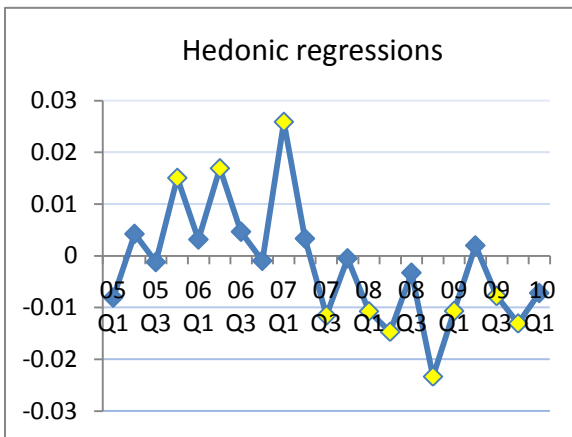
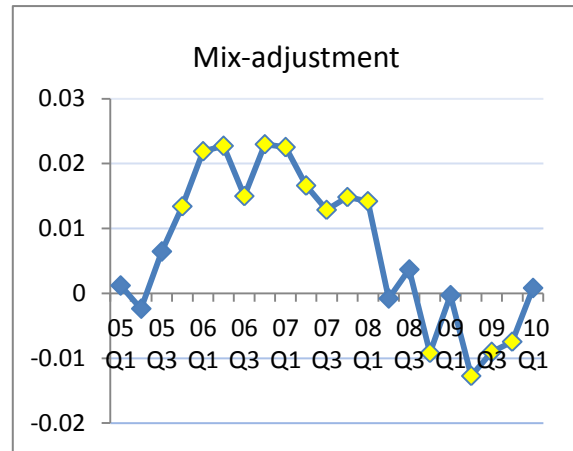
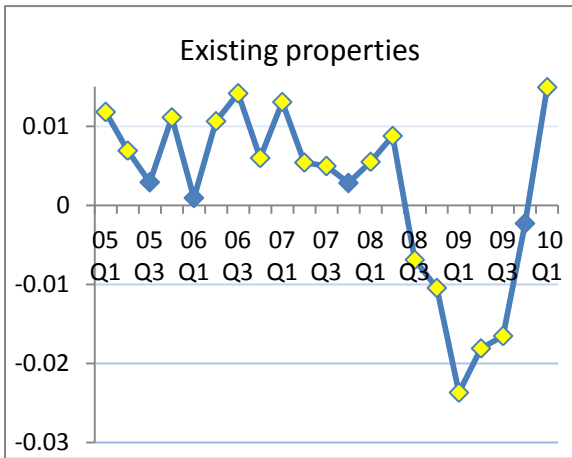
B. Does it matter for modelling?

There is naturally much concern in the literature with the duration of housing cycles (Bracke (2011) and the relationship between (real) house price booms and banking busts including Igan and Loungani (2012), Crowe et al. (2011); and Claessens *et al.* (2010). Empirical work is often based on a sample of countries¹⁹ and includes analysis of the cross-country coincidence of real house price index changes, the magnitude, duration, and characteristics of house price cycles, and cross-country relationship between HPI changes and those of other macroeconomic and household financial variables. Implicit in such analysis is the assumption that the measurement-related differences in house price indexes between countries are not of a nature/sufficient magnitude to adversely affect the results.

¹⁸ There is likely to be some intercorrelations between the variable sets For example, in the United States, the repeat purchase method is used to hold constant the quality mix of transactions for existing houses, but for new houses sold only once, the hedonic method is used, since new houses (coverage) will generally have only one transaction (method). More generally, Land Registry data based on transaction prices often has a large coverage, but limited characteristic variables, arguing against the use of hedonic regressions, while the opposite applies to realtor data based on asking prices.

¹⁹ Work has also been undertaken for states within countries, for example Igan and Kang (2011) for within Korea and the United States.

Figure 5, Varying estimated parameters
 Points in yellow are statistically significant at a 5 percent level



We take (an earlier version of) the model in Igan and Loungani (2012) (hereafter IL) to illustrate the impact of measurement differences on such analytical work. We stress our and their estimates are not directly comparable. Their estimates are from a regression using (unbalanced) pooled quarterly HPIs from 17 countries over 1970Q1 to 2010Q1. This contrasts with our a shorter period of 2005:Q1 to 2010Q1 and use of a panel data set of about 150 HPI series over a similar, but extended, set of 21 countries. Country house price inflation for our work is estimated using (441 (21 countries by 21 quarterly changes) coefficients on country-time interaction dummy variables, from a pooled regression that includes measurement variables, and time-varying country effects. However, we employ the same estimator (OLS with robust standard errors), variable list, and dynamics used by IL. We adopt their model but estimated with our measurement-adjusted and unadjusted HPIs on the left hand side.

Table 2, column 1 provides from the results by IL from their pooled regression—further details and rationale for their model are given in IL. Quite similar results are found from our analysis given in columns 2 and 3 of Table 2 with the expected signs on the estimated coefficients. Given the quite major differences in the data sets used here and by IL, this study gives further credence to their work. Affordability is not statistically significant at a 5 percent level, but becomes so (columns 4 and 5) when its square is dropped.²⁰

The measurement-adjusted (Madj) estimates in columns 2 and 4 improve on the unadjusted ones in columns 3 and 5. Table 2 shows both stock price changes and long-term interest rates have no (statistically significant at a 5 percent level) affect on HPI changes both for the IL estimates (column 1) and unadjusted estimates (columns 3 and 5), but do so with the appropriate sign for the measurement-adjusted estimates (columns 2 and 4).²¹ For some cases, parameter estimates for Madj price changes have larger falls and smaller increases than their unadjusted counterparts. For example, Madj and unadjusted house price inflation are estimated to *fall* by 8.5 and 7.7 percent respectively as (lagged) affordability increases by 1 percent, to *increase* by 0.40 and 0.52 percent respectively as the change in income per capita increases by 1 percent, and to *increase* by 0.156 and 0.186 percent respectively as the change in credit increases by 1 percent.

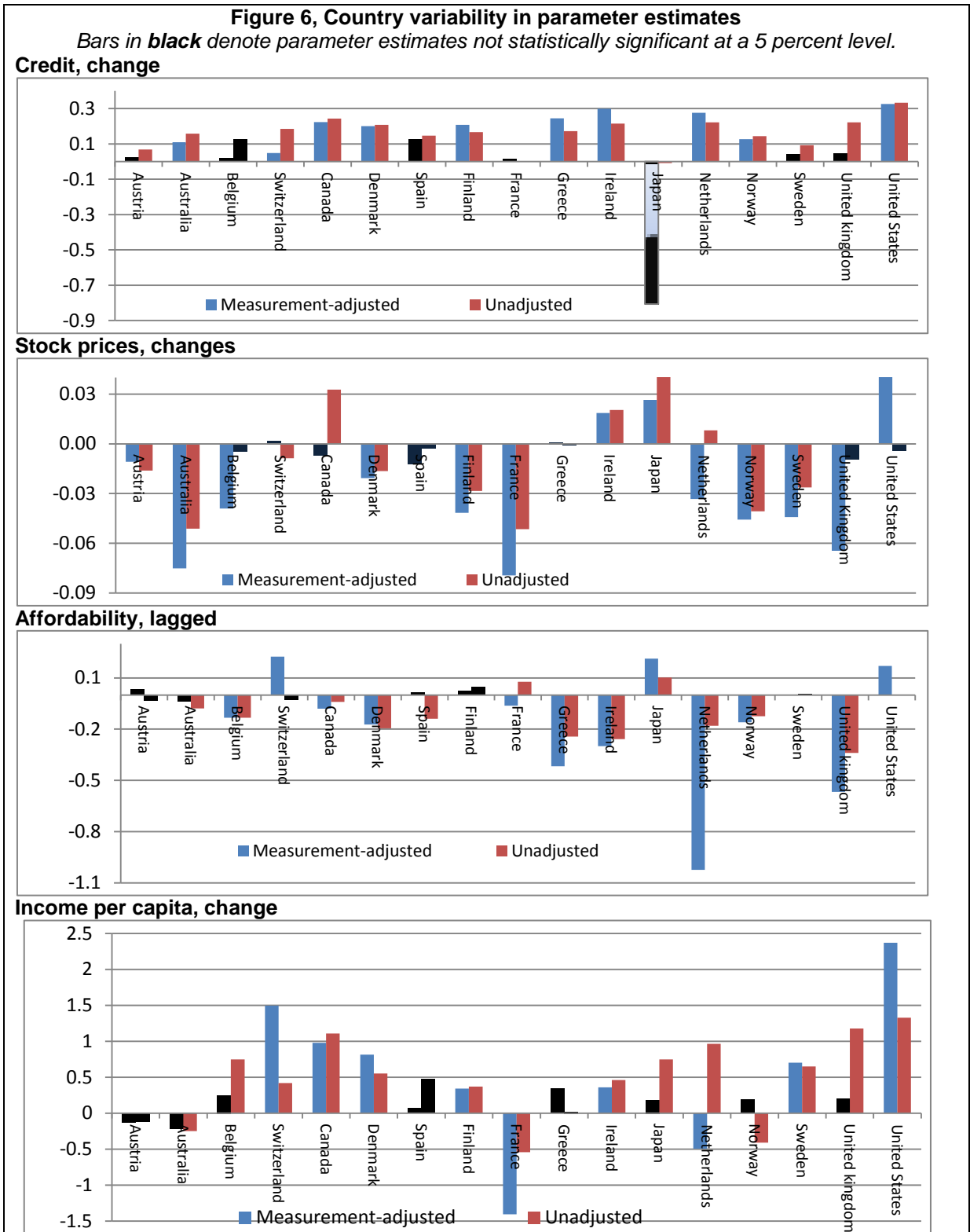
²⁰ Excluded from Table 4 are the country effects (available for the authors) required by our model given that more than one series is used for each country. F-tests on the redundancy of these country effects found the null hypothesis of no such effects to be rejected at a 1 percent level (F=3.735 and 2.887 respectively for the measurement-adjusted and unadjusted estimates).

²¹ The coefficient for stock prices in column (4) denoted as statistically significant at a 10 percent level was in fact a borderline *p*-value of 0.1056. We used a (White) period heteroscedasticity adjustment to the standard errors. Had diagonal or cross-sectional one been applied the *p*-value would have been 0.017 and 0.069 respectively, compared with *p*-values of 0.2076 and 0.1884 for the unadjusted estimates.

Table 2, Pooled regression results for house price indexes

Dependent variable	House price index, log quarter-on-quarter change:				
	Igan and Loungani (2012) (1)	Measurement-adjusted estimates (2)	Unadjusted Estimates (3)	Excluding: Affordability-lag squared	
				Measurement-adjusted estimates (4)	Unadjusted estimates (5)
Affordability, lagged	-0.0517*** (0.0158)	-0.291* (0.1772)	-0.174 (0.1201)	-0.085** (0.037)	-0.077*** (0.0271)
Income per capita, change	0.431*** (0.0684)	0.392** (0.1516)	0.519*** (0.0917)	0.395*** (0.142)	0.520*** (0.0919)
Working-age pop, change	0.999*** (0.1970)	0.735* 0.3941	0.494** (0.2354)	0.754* (0.411)	0.503** (0.2438)
Stock prices, change	0.0044* (0.0026)	-0.017** (0.0086)	-0.007 (0.0071)	-0.016* (0.010)	-0.00604 (0.0077)
Credit, change	0.0190*** (0.0053)	0.165*** (0.0268)	0.191*** (0.0253)	0.156*** (0.031)	0.186*** (0.0273)
Short-term interest rate	-0.0009** (0.0004)	-0.010** (0.0046)	-0.006** (0.0025)	-0.010** (0.005)	-0.006** (0.0025)
Long-term interest rate	-0.0006 (0.0004)	0.000001*** 0.0000	0.000 (0.0000)	0.000006*** (0.0000)	0.000002 (0.0000)
Affordability, lag, squared	-0.0019* (0.0012)	-0.014 (0.0121)	-0.007 (0.0085)		
Construction costs, change	0.129*** (0.0366)	0.320* (0.1671)	0.312* (0.1709)	0.285* (0.172)	0.295* (0.1738)
Constant	-0.243*** (0.0554)	-1.267** (0.6384)	-0.838** (0.4232)	-0.553** (0.247)	-0.504*** (0.1796)
No. Obs.	1,297	357	357	357	357
No. of periods	1970Q1-2010Q1	2005Q1-2010Q1	2005Q1-2010Q1	2005Q1-2010Q1	2005Q1-2010Q1
No. countries	17	17	17	17	17
Redundant country effect: χ^2		48.94 (0.0000)	60.72 (0.0000)	46.6 (0.0001)	59.10 (0.0000)
R-squared	0.18	0.29	0.54	0.29	0.54

One issue of interest to this study, and also cited and explored by IL, is the cross-country variability in the parameter estimates. In Figure 6 we show the result of relaxing the restriction on the 8 estimated parameters to be constant across the 17 countries, for both measurement-adjusted and unadjusted HPIs. The individual results are for the large part—over 70 percent of the 272 estimates—statistically significant at a 5 percent level. Of note is



that while stock price changes and long-term interest rates were not statistically significant when related to the unadjusted measure of housing inflation in the restricted model, Table 4,

these country-specific estimates were found to be generally statistically significant when allowed to vary across countries, Figure 6. The nature and extent of the country effect differed across series. In some cases, stock prices, affordability, and long-term interest rates, there is evidence of larger falls when measurement-adjusted HPIs are used, while in others the impact of measurement-adjustment is mixed. The disparity between the estimated parameters arising from using measurement-adjusted and unadjusted HPIs, as well as the magnitude of their effects, can be quite marked in some countries, including Japan, Netherlands, Switzerland, the United Kingdom and the United States.

V. COMMERCIAL PROPERTY PRICE INDEXES (CPPIs)

A. Alternative data sources: problems

The compilation of commercial property price indexes (CPPIs) is the elephant in the room. The economic analysis and modeling of HPIs is extensive as is the concern directed to the impact of house price bubbles (along with equities) on recessions. However, commercial properties can similarly be subject to bubbles and impact on recessions. **Commercial property assets in ther US in amounted to.....** Commercial properties include offices, retail, industrial, and residential (owned or developed for commercial purposes) properties. Within each of these categories properties can be highly heterogeneous and transactions infrequent, more so than for residential, thus complicating comparisons of average transaction prices for a fixed-quality bundle of properties over time. Even where matched (repeat) transactions can be used, the population of properties sold more than once in the period of the index can be very limiting and unrepresentative of the total population of commercial properties. Kanutin (2013) highlights some of these limitations in work by the European Central Bank's (ECB) Working Group on General Economic Statistics (WGGES) that includes results for experimental quarterly indicators for CPPIs for the EU, the euro area and 13 individual countries.

The database used for the measurement of commercial property price indexes (CPPIs) dictates the potential weaknesses in the resulting indexes and limitations of the methods available for measuring the indexes. Two major types of data are appraisals of the value of properties and recorded transaction prices. Appraisal (valuation) indexes, based on judgment, smooth and lag transaction prices and, for the large part, have serious problems with regard to timeliness and representativity.²² Transaction-based CPPIs may have sample selectivity bias

²² Appraisal data s used for investment return indexes comprise a valuation and rental income component. There is a school of thought that the valuations over time may be used for CPPIs, along with adjustments for depreciation and capital expenditure on improvements to return the property to the preceding period's state. The proposal arises as a solution to the problem of sparse transaction data. However, first, guidelines to professional appraisers are that they base their appraisal on the transactions of similar properties currently in the market, introducing circularity in the argument that appraisals solve the problem of sparse data. Second, in the majority of European countries, annual appraisals are the norm with linear interpolated values used to derive quarterly series: thus in any quarter, on average, one quarter of appraised prices will be based on a linear interpolation commencing a year ago and three-quarters of appraised prices will be imputed on this basis, there being no extrapolations used. (In the US, annual external appraisals are supplemented by in-house estimates by the property owners/mangers.) Third, information on capital expenditures and depreciation are used, in

(continued)

and limited sample sizes for these heterogeneous properties. For some countries the problem of limited samples sizes will be too severe to derive reliable CPPIs. For others, there is a need to seek methodological improvements to CPPI measurement on sparse transaction price data for heterogeneous properties. If appraisal data are to be used, there need to be major improvements to the periodicity and concepts and operationalized measures, and a harmonization thereof, as well as further research on statistical methods of linking transaction to appraisals information, as employed by ECB on experimental transaction-linked indexes. The focus of our work is on better ways of handling transaction data—see also Bokhari and Geltner (2012), Devaney and Diaz (2011), Picchetti, Paulo (2013). More research is needed for the use of both transaction and appraisal-based data for CPPI measurement. The current data and methodological state of play is arguably inadequate for a definitive CPPI Handbook.

Two illustrations of technical research work to improve measurement are given below. Real estate price indexes are generally derived from the estimated parameters of regression models. This is necessary to repeat sales and some forms of hedonic quality adjustment. While aggregation issues in an index number context have been largely solved Diewert (1976, 1978) and the *CPI Manual*, ILO *et al.* (2004, chapters 15–20), there is little work on weighting within regressions, Diewert (2005) being an exception. We outline some such developments from Silver and Graf (2014), by necessity technical given the largely regression-based formulation of these real estate indexes.

B. Sparse data and index aggregation in a regression framework

CPPI country measurement practice, for the large part, benefits from a regression-based framework, as is the case with HPIs. Regression-based frameworks enable:

- hedonic and repeat sales controls for quality-mix changes;
- confidence intervals;
- inclusion of other conditioning variables on inflation measures;
- and the use of more efficient estimators, say using counts data.

Data:

The transaction-based CPPIs used in this US study were provided to the authors by Real Capital Analytics (RCA CPPI).²³ The coverage includes relatively high-value transactions;

appraisal-based indices, as a means for quality adjustment between appraisals. There is much in the definition of these variables that render them inadequate as currently constructed for the needs of CPPIs. Fourth, guideline for appraisals and definitions vary between and within countries, and substantially so. Fifth, the sample of values is for larger professionally-managed properties—there may be a sample selectivity bias. Finally, there is evidence that appraisal-based indexes unduly smooth and lag prices Geltner and Fisher (2007).

²³ We acknowledge their support both in the provision of data and ongoing advice. Information on the RCA CPPI is at: https://www.rcanalytics.com/Public/rca_cpqi.aspx; see Geltner and Pollakowski (2007) for methodological details.

(continued)

from 2000 commercial repeat-sale property transactions of over \$5 million but extended in 2005 to transactions over \$2.5 million (at constant dollars inflation-adjusted to December 2010). Applied filters exclude “flipped” properties (sold twice in 12-months or less), transactions not at arm’s-length, properties where size or use has changed, and properties with extreme price movements (more than 50 percent annual gain/loss).

The empirical work uses two panel data sets: RCA CPPIs from 2000:Q1 to 2012:Q4 for “apartments” broken down by 34 metros/markets areas, and similarly for “other properties” that include industrial, office, and retail—hereafter “core commercial”—properties. RCA estimates each of the 34 granular series using repeat-sales regressions. In each section below, results will be presented for both apartments and core commercial properties.

C. How to derive more efficient estimates given sparse data

The concern is with sparse data and, akin to normal statistical practice when faced with limited sample sizes, increasing the efficiency of the estimator. Geltner and Pollakowski (2007, page 18) note that the RCA National All-Property CPPI averaged 285 monthly repeat sales in 2006, but only 29 in 2001, at its inception. We use data on “counts”—number of transactions—in each quarter for each area/type of property, provided by RCA, to improve the efficiency of the estimates of US commercial property price inflation.

Consider a two-way fixed effects panel model:

$$\mathbf{Y}_{n,t} = \mathbf{Z}_\mu \boldsymbol{\mu}_n + \mathbf{Z}_\gamma \boldsymbol{\gamma}_t + \mathbf{V}_{n,t} \dots\dots\dots(1)$$

where $\mathbf{Y}_{n,t} = (y_{1,t}, y_{2,t}, \dots, y_{n,t})$ is a $n \times 1$ vector of commercial property price inflation (log-change of the index) for each of the periods $t = 1, \dots, T$; $\boldsymbol{\mu}_n$ is the $n \times 1$ parameter vector of spatial (area) fixed effects and \mathbf{Z}_μ the associated $n \times n$ dummy variable matrix; $\boldsymbol{\gamma}_t$ is the $t \times 1$ parameter vector of fixed time effects and \mathbf{Z}_γ the associated $n \times t$ dummy variable matrix; and $\mathbf{V}_{n,t} = (v_{1,t}, v_{2,t}, \dots, v_{n,t})$ are IID($0, \sigma_v^2$) stochastic disturbances. The fixed time effects parameters $\boldsymbol{\gamma}_t$ are estimated using the least squares *dummy variable* (LSDV) method as opposed to demeaning, given a specific interest in $\boldsymbol{\gamma}_t$ and inflation estimates derived therefrom; the restriction is imposed that $\boldsymbol{\gamma}_1 = 0$ and a constant is included in equation (1).

In addition, “counts data” $\mathbf{C}_{n,t}$, are the number of observed price transactions for each area n in each period t . We use ordinary least squares (OLS) and weighted least squares (WLS) estimators, the latter with $\sqrt{\mathbf{C}_{n,t}} = (\sqrt{c_{1,t}}, \sqrt{c_{2,t}}, \dots, \sqrt{c_{n,t}})$ as explicit weights.

The assumption is that $V(\mathbf{V}_{n,t}) = \sigma^2 / \mathbf{C}_{n,t}$; as counts increase, the variance decreases. The $\hat{\gamma}_t$ form the basis of estimates of property price inflation. Taken as a whole series, the more efficient WLS estimates can be argued to better estimate changes in commercial property price inflation. OLS gives less precisely measured observations more influence than they should have and more precisely measured ones too little influence. WLS using counts data assigns a weight to each observation that reflects the uncertainty of the measurement and thus improves the efficiency of the parameter estimates.

This focus on the efficiency of the estimator is in line with the literature on “errors in measurement” in the dependant variable—Hausman (2001). Such measurement errors result in OLS parameter estimates that are unbiased, but inefficient, with reduced precision and associated lower t -statistics and \bar{R}^2 . (This differs from the literature on measurement errors in the explanatory variable for which OLS parameter estimates are biased.) The measured value of $\mathbf{Y}_{n,t}$ is the sum of the true measure $\mathbf{Y}_{n,t}^*$ plus a measurement error \mathbf{E}_Y :

$$\mathbf{Y}_{n,t} = \mathbf{Y}_{n,t}^* + \mathbf{E}_Y \text{ and the true measure is } \mathbf{Y}_{n,t}^* = \mathbf{Y}_{n,t} - \mathbf{E}_Y.$$

Instead of estimating: $\mathbf{Y}_{n,t}^* = \mathbf{Z}_\mu \boldsymbol{\mu}_n + \mathbf{Z}_\gamma \boldsymbol{\gamma}_t + \mathbf{V}_{n,t}$, we estimate:

$$\mathbf{Y}_{n,t}^* = \mathbf{Z}_\mu \boldsymbol{\mu}_n + \mathbf{Z}_\gamma \boldsymbol{\gamma}_t + \mathbf{E}_Y + \mathbf{V}_{n,t} \dots \dots \dots (2)$$

Measurement error thus increases the variance of the error term from $\text{var}(\mathbf{V}_{n,t})$ to $\text{var}(\mathbf{V}_{n,t}) + \text{var}(\mathbf{E}_Y)$ and the variance (standard error) of $\boldsymbol{\gamma}_t$ accordingly increases. We directly target the $\text{var}(\mathbf{E}_Y)$ component with explicit WLS counts weights $\mathbf{C}_{n,t}$.

We use all 34 area inflation rates to constitute $\mathbf{Y}_{n,t}$ on the left-hand-side of equation (1) above. The results are given in Figure 7.

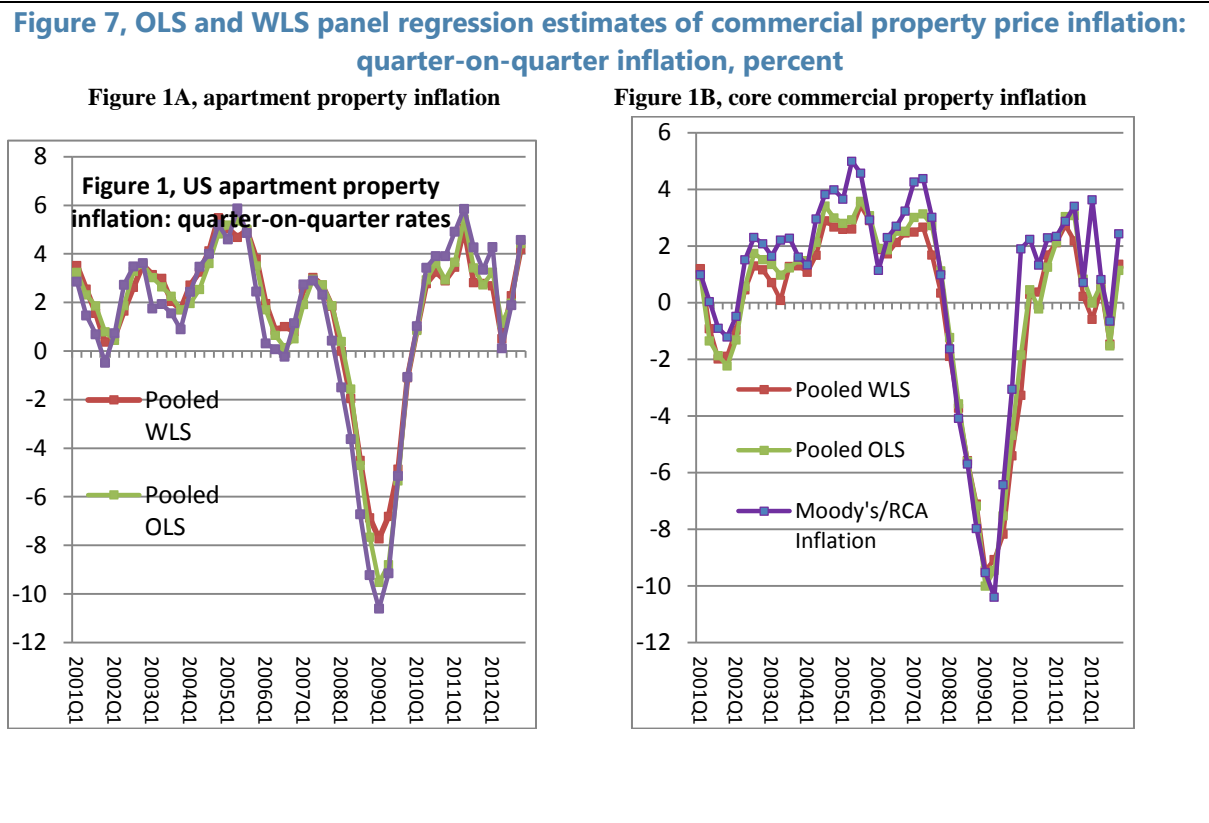
D. How to aggregate in regression framework: modeling spatial dependency

The aggregate index price changes in this illustration were the parameter estimates on the time dummy used for the index estimates. This formulation for measuring aggregate price change can be subject to omitted variable bias if there are price spillovers across geographical areas. A spatial autoregressive (SAR) term is included in the regression thus removing potential bias by incorporating spillover effects—a SAR model.

Modeling spatial dependency is not uncommon in the context of hedonic house price models, for example, Anselin (2008). We include a (first order) spatial autoregressive term in equation (1), a SAR model:²⁴

²⁴ We note from Manski (1993) that when a spatially lagged dependent variable, spatially lagged regressors, and a spatially autocorrelated error term are included simultaneously the parameters of the model are not identified unless at least one of these interactions are excluded. We found no firm evidence for the spatial autocorrelated error (SEM) model and our explanatory variables of interest, the time dummies, *a priori*, have no spillover effect. In any event, we follow the more general advice by LeSage and Pace (2009, pp. 155–58), and Elhorst (2010) to adopt the SAR model and exclude the spatially autocorrelated error term to favor inclusion of the spatially autoregressive one.

$$\mathbf{Y}_{n,t} = \rho \mathbf{W}_n \mathbf{Y}_{n,t} + \mathbf{Z}_{\mu} \boldsymbol{\mu}_n + \mathbf{Z}_{\gamma} \boldsymbol{\gamma}_t + \mathbf{V}_{n,t} \boldsymbol{\mu}_n \dots \dots \dots (3)$$



where \mathbf{W}_n is a $n \times n$ row-standardized spatial physical proximity weight matrix, outlined later, for the spatial autoregressive term and ρ the spatial autoregressive parameter to be estimated. Equation (3) expressed in its reduced form is given by:

$$\mathbf{Y}_{n,t} = (\mathbf{I}_n - \rho \mathbf{W}_n)^{-1} \mathbf{Z}_{\mu} \boldsymbol{\mu}_n + (\mathbf{I}_n - \rho \mathbf{W}_n)^{-1} \mathbf{Z}_{\gamma} \boldsymbol{\gamma}_t + (\mathbf{I}_n - \rho \mathbf{W}_n)^{-1} \mathbf{V}_{n,t} \dots \dots \dots (4)$$

The matrix of partial derivatives of $\mathbf{Y}_{n,t}$ with respect to a change in a dummy time variable, is given by Elhorst (2010) and Debarys and Ertuur (2010) as:

$$\frac{\partial \mathbf{Y}_{n,t}}{\partial \mathbf{Z}_{\gamma}} = \boldsymbol{\gamma}_t (\mathbf{I}_n - \rho \mathbf{W}_n)^{-1} = \mathbf{B}_t \dots \dots \dots (5)$$

There is a resulting $n \times n$ matrix \mathbf{B}_t for the marginal effect of each estimated parameter on a time dummy variable. It is apparent from equation (5) that in a fixed effect panel OLS model where $\rho = 0$, the diagonal elements would be $\boldsymbol{\gamma}_t$ and the non-diagonal effects zero, resulting in a single parameter estimate $\boldsymbol{\gamma}_t$ for each period t . In this SAR model, the spatial direct

effects are not γ_t , but are given for each area n by the diagonal elements of \mathbf{B}_t . The top-left element would be the effect on property price inflation of moving from one quarter to the next for say, Boston, but differs from the OLS estimate in that it includes the resulting feedback effects from proximate spatially dependent areas, arising from Boston's property price inflation. Direct effects can be seen from equation (5) to depend on (i) their proximity to other areas, as dictated by \mathbf{W}_n ; (ii) the strength of spatial dependence, ρ ; and (iii) the parameter γ_t . The diagonal elements are estimates of the direct effect for each area n .

The indirect effects for each area n are given by the off-diagonal column elements of \mathbf{B}_t and the total effect for area n is the column sum of area n and includes its direct and indirect effect. We follow LeSage and Pace (2009), and the output of standard software in this area, in reporting, for the marginal effect of each time dummy parameter estimate, one direct effect as the average of the diagonal of the elements, $tr(\mathbf{B}_t)/n$ and one total effect measured as the average of the column sums; the indirect effect is deduced as the difference between the two. The average total effect answers the question: what will be the average total impact on property price inflation of the typical area? (LeSage and Pace, 2009).

The spatial approach ameliorates omitted variable bias by its inclusion of $\rho \mathbf{W}_n \mathbf{Y}_{n,t}$ in equation (5). Debarsy and Ertur (2010), in a study of spillovers in a panel regression for 24 OECD countries of domestic savings on investment found, for 1971–1985, the coefficient from a conventional fixed effect panel estimator to be reduced from 0.609 to 0.452 when using a SAR model, a more reasonable estimate *a priori* in the context of the Feldstein-Horioka (1980) paradox.

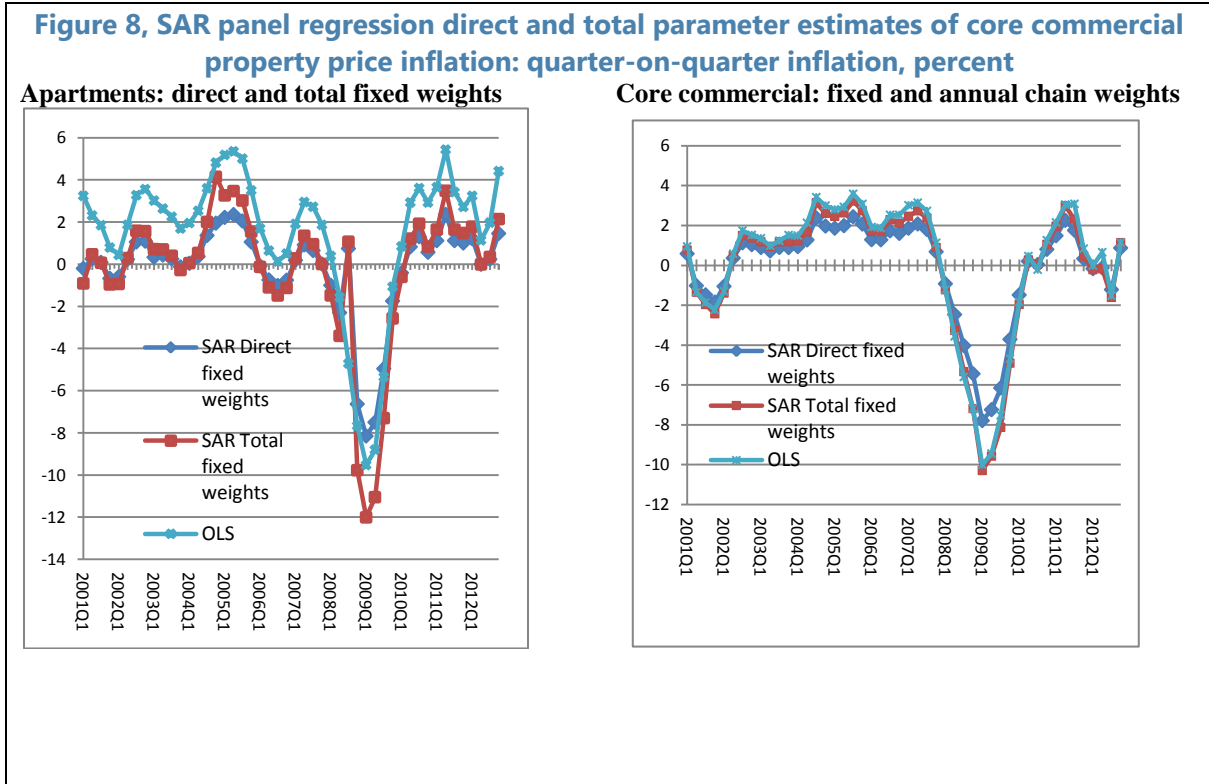
Introducing weights

The derivation of estimates of the direct effects as an average of the diagonals and total effects as an average of the column sums of equation (5) has an interesting useful index number application. The averaging applied by the software is unweighted over the n areas. We can deconstruct equation (5) into the total and direct effect for their n components and apply weights to the estimated area (direct and total) price changes; the weights may be relative values of the stock of, or transactions in, commercial property. Diewert (2005) previously proposed weighting systems within a regression framework via analytic weights using a WLS estimator. If using a SAR model, the framework advocated here provides an alternative explicit weighting mechanism that can be applied to each of the direct, total, and indirect spatial effects; thus, allowing WLS weights to be used for other purposes, say in relation to heteroscedasticity. For example, while the average unweighted direct effect for γ_1 is $tr(\mathbf{B}_1)/n$, the weighted average of direct effects for γ_1 is given by:

$$tr(\mathbf{SB}_1) = \sum_n (\mathbf{SB}_1)_{nn} \dots\dots\dots (6)$$

where \mathbf{S} is a $n \times n$ matrix whose diagonal is the area n relative shares (weights) in stocks or transactions of commercial property.

Figure 8 shows the SAR total (fixed ρ and \mathbf{W}_n) effect is primarily constituted by the direct effect, with little indirect difference, except for the trough in 2009. The OLS estimates are biased upwards against the SAR total (fixed) for apartments (core commercial) by, on average 1.78 (1.68) percentage, and in 2009:Q1 by 2.47 (2.48) percentage points. In Silver and Graf (2013) we relax the restriction on fixed weights.



Relaxing the restrictions of constant ρ and \mathbf{W}_n

In empirical work both ρ and \mathbf{W}_n are generally held constant over time. Indeed the software noted and used in Section III for spatial econometric estimation does not allow any such variation within a panel. This restriction is relaxed by annually estimating equation (5) for 4 quarters in 2000, again for 2001, 2002, ..., 2012, thus allowing $\rho = \rho^\tau$ and $\mathbf{W}_n = \mathbf{W}_n^\tau$, for $\tau = 1(2001), \dots, 12(2012)$ fixed for quarters within each year, but allowed to vary between years. The results are compared in Silver and Graf (2013).

VI. SUMMARY

For the hard problem for countries of properly measuring residential property price indexes countries generally have available to them secondary data sources, including land

registries/notaries, lenders, realtors, buyers, and builders, each of which may have, albethey different, problems of coverage, pricing concept, timeliness, reliability and sufficiency for enabling quality-mix adjustment; harmonization is not a given. Looking at country illustrations we found that measurement matters, even for a given method, however we also showed examples of countries making their own luck and improving their HPIs by adopting a long-run strategies: the way forward.

A formal analysis showed that measurement mattered, and that it really matters when it matters, as we moved into, during and recovering from recession. It also mattered in modeling, but less so than may be envisaged.

The really hard area of price index measurement was for commercial property where transaction data can be very sparse and properties very heterogeneous. Valuation data and methodology for transaction-based CPPIs both need further research and development. CPPI measurement using transaction data is quite technical; two problems looked at were of sparse data and aggregation within a regression framework.

References

- Akerlof, George A. and Robert J. Shiller 2009. *Animal Spirits: How Human Psychology Drives the Economy And Why It Matters for Global Capitalism*, Princeton University Press, Princeton NJ: March.
- Anselin, L 2008. Errors in variables and spatial effects in hedonic house price models of ambient air quality. *Empirical Economics* 34, 1, 5–34.
- Bokhari, Sheharyar and David Geltner 2012. Estimating real estate price movement for high-frequency tradable indexes in a scarce data environment, *Journal of Real Estate Finance and Economics* 45, 2, 522-43.
- Bracke, Philippe 2011. How long do housing cycles last? A duration analysis for 19 OECD countries, *IMF Working Paper Series* WP11/231 October.
- Carless, Emily, 2011, Reviewing house price indexes in the UK. Paper presented at the Workshop on House Price Indexes, Statistics Netherlands, The Hague, 10-11 February 201. Available at: <http://www.cbs.nl/en-GB/menu/organisatie/evenementen/HPIworkshop/presentations/default.htm>.
- Claessens, Stijn, Giovanni Dell’Ariccia, Deniz Igan, and Luc Laeven 2010. Cross-country experiences and policy implications from the global financial crisis, *Economic Policy* 25, 267-293.
- Crowe, Christopher, Giovanni Dell’Ariccia, Deniz Igan, and Rabana Pau l 2011. How to deal with real estate booms: lessons from country experiences, *IMF Working Paper Series* WP/11/91.
- Debarys, Nicolas and Cem Ertur 2010. Testing for spatial autocorrelation in a fixed effects panel data model, *Regional Science and Urban Economics* 40, 453–470.
- Devaney, Steven and Roberto Martinez Diaz 2011. Transaction Based Indices for the UK Commercial Real Estate Market: An Exploration using IPD Transaction Data, *Journal of Property Research* 28, 4, 269-289.
- Diewert, W. Erwin 1976. Exact and superlative index numbers, *Journal of Econometrics* 4, 114–145.
- Diewert, W. Erwin 1978, “Superlative index numbers and consistency in aggregation, *Econometrica* 46, 883–900.
- Diewert, W. Erwin, Jan de Haan and Rens Hendriks 2011. Hedonic Regressions and the decomposition of a house price index into land and structure components, *Department of Economics Discussion Paper 11-01*, The University of British Columbia.
- Diewert, W. Erwin, and Chihiro Shimizu 2013a, A conceptual framework for commercial property price indexes, *Department of Economics Discussion Paper 13-11*, The University of British Columbia.
- Diewert, W. and Chihiro Shimizu 2013b, *Residential property price indexes for Tokyo*, School of Economics Discussion Paper 13-07, The University of British Columbia.
- Diewert, W. Erwin 2005. Weighted country product dummy variable regressions and index number formulae, *Review of Income and Wealth* 51, 561–70.
- Diewert, W. Erwin, Saeed Heravi, and Mick Silver 2008. Hedonic imputation indexes versus time dummy hedonic indexes.” In W. Erwin Diewert, John Greenlees, and Charles R. Hulten eds. *Price Index Concepts and Measurement*, NBER, Chicago: University of Chicago Press, 278–337, 2010.
- Elhorst, J. Paul 2010. Applied Spatial Econometrics: Raising the Bar, *Spatial Economic Analysis* 5, 1, March.
- Eurostat, European Union, International Labor Organization, International Monetary Fund, Organisation for Economic Co-operation and Development, United Nations Economic Commission for Europe, The World Bank 2013. *Handbook on Residential Property Prices Indices RPPIs*, Luxembourg, European Union.
- Feldstein, Martin and Charles Yuji Horioka 1980. Domestic saving and international capital flows, *Economic Journal* 90, 314–29.
- Geltner, David and Jeffrey Fisher 2007. Pricing and index considerations in commercial real estate derivatives, *The Journal of Portfolio Management* 33, 5, 99–118.

- Geltner, David and Henry Pollakowski 2007. A set of indexes for trading commercial real estate based on the Real Capital Analytics Transaction Prices Database, *MIT Center for Real Estate Working Paper*, Release 2.
- Gouriéroux, Christian and Anne Laferrère 2009. Managing hedonic housing price indexes: the French experience, *Journal of Housing Economics* 18, 206–213.
- Hann, Jan de and W. Erwin Diewert, 2013. Hedonic regression methods, and Jan de Hann, Repeat sales methods. In Eurostat *et al.* 2013 *op. cit.*.
- Hausman, J. 2001. Mismeasured variables in econometric analysis, problems from the right and problems from the left. *Journal of Economic Perspectives* 15, 4, 57-67.
- Heath, Robert 2013. Why are the G-20 Data Gaps Initiative and the SDDS Plus relevant for financial stability analysis? *Journal of International Commerce, Economics and Policy*, 4, 3.
- Hill, Robert J., 2013, Hedonic price indexes for residential housing: a survey, evaluation and taxonomy, *Journal of Economic Surveys*, 27, 5, 879–914, December.
- Igan, Deniz and Prakash Loungani, 2012, Global housing cycles, *IMF Working Paper Series* WP12/217 August.
- Igan, Deniz and Heedon Kang 2011, Do loan-to-value and debt-to-income limits work? evidence from Korea, *IMF Working Paper Series* WP/11/297, December.
<http://www.imf.org/external/pubs/cat/longres.aspx?sk=25441.0>.
- International Labour Office ILO, IMF, OECD, Eurostat, United Nations, World Bank 2004, *Consumer Price Index Manual: Theory and Practice*, Geneva: ILO.
<http://www.ilo.org/public/english/bureau/stat/guides/cpi/index.htm>.
- Kanutin, Andrew 2013. ECB progress towards a European commercial property price index. Paper presented at the 13th Ottawa Group Meeting held from 1–3 May, 2013, Copenhagen, Denmark. Available at: <http://www.dst.dk/da/Sites/ottawa-group/agenda.aspx>.
- Leventis, Andrew, 2008, Revisiting the differences between the OFHEO and S&P/Case-Shiller House Price Indexes: new explanations, Office of Federal Housing Enterprise Oversight, January, Available at: www.ofheo.gov/media/research/OFHEOSPCS12008.pdf.
- LeSage J. P. and R.K. Pace 2009. *Introduction to Spatial Econometrics*. Taylor & Francis, New York, FL.
- Mack, Adrienne and Enrique Martínez-García 2011, A cross-country quarterly database of real house prices: a methodological note," by Federal Reserve Bank of Dallas, Globalization and Monetary Policy Institute Working Paper No. 99
- Manski, C. F. 1993. Identification of endogenous social effects: The reflexion problem. *Review of Economic Studies* 60, 531-42.
- Matheson, Jil 2010, *National Statistician's Review of House Price Statistics*, United Kingdom Government Statistical Services.
- Muellbauer, John and Anthony Murphy, 2008. Housing Markets and the Economy: the Assessment, *Oxford Review of Economic Policy* 24, 1, 1–33.
- Office for National Statistics (ONS) 2013. *Official House Price Statistics Explained*, ONS April, 4.
- Picchetti, Paulo 2013. Estimating and smoothing appraisal-based commercial real-estate performance indexes. Paper presented at the 13th Ottawa Group Meeting held from 1–3 May, 2013, Copenhagen, Denmark. Available at: <http://www.dst.dk/da/Sites/ottawa-group/agenda.aspx>.
- Shiller, Robert J. 1991. Arithmetic repeat sales price estimators," *Journal Housing Economics* 1, 1, 110–126.
- Shiller, Robert J. 1993. Measuring asset values for cash settlement in derivative markets: hedonic repeated measures indexes and perpetual futures," *Journal of Finance* 48, 3, 911–931.
- Shiller Robert J., 2014. S&P Dow Jones Indices: *S&P/Case-Shiller Home Price Indices Methodology* McGraw Hill Financial, July. <http://us.spindices.com/index-family/real-estate/sp-case-shiller>.

Shimizu, Chihiro, Kiyohiko G. Nishimura, and Tsutomu Watanabe, 2009. Housing prices and rents in Tokyo: a comparison of repeat-sales and hedonic measures.” Paper presented at the 11th Ottawa Group Meeting, Neuchâtel, 27th to 29th May 2009. Available at:

<http://www.ottawagroup2009.ch/bfs/ottawagroup2009/en/index/05.html>

Silver, Mick, 2011. House price indices: does measurement matter?” *World Economics*, 12, 3, July-Sept.

Silver, Mick and Heravi, Saeed 2007. Hedonic indexes: a study of alternative methods. In E.R. Berndt and C. Hulten eds. *Hard-to-Measure Goods and Services: Essays in Honour of Zvi Griliches*, pp. 235–268, NBER/CRIW, Chicago: University of Chicago Press.

Silver, Mick 2012. Why house price indexes differ: measurement and analysis, *IMF Working Paper* WP/12/125.

Silver, Mick 2013. Understanding commercial property price indexes, *World Economics* 14, 3, September, 27-page 41.

Silver, Mick and Brian Graf 2014, Commercial property price indexes: problems of sparse data, spatial spillovers, and weighting, *IMF Working Paper* WP/14/72, Washington DC, April.

