



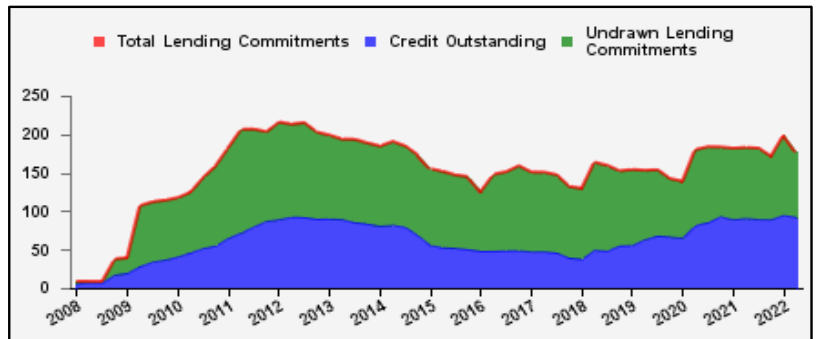
Weekly Report on Key Financial Statistics

Table 1. Key Indicators 1/

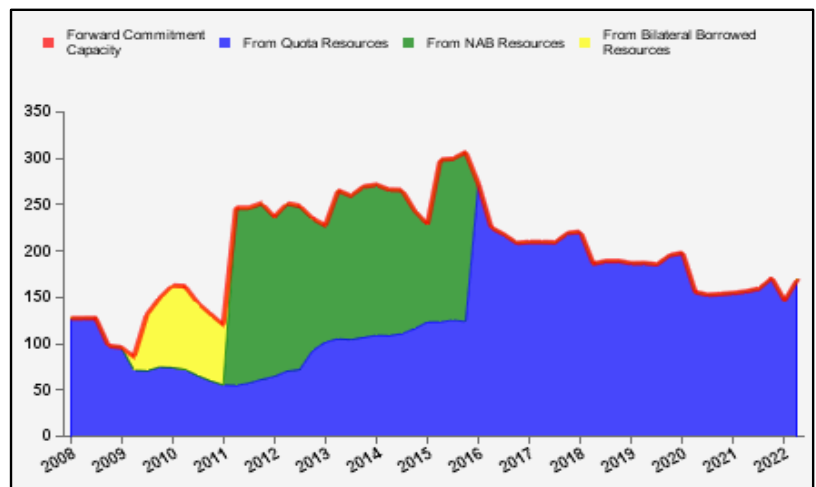
as of June 17, 2022

(In billions of SDRs, unless indicated otherwise)

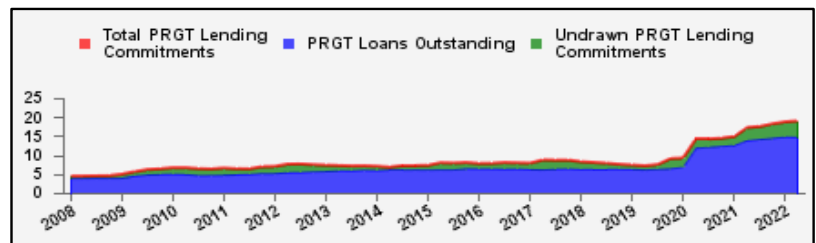
GRA Lending and Resources	SDR	USD
I. Total Lending Commitments, of which:	176.6	235.8
Undrawn Lending Commitments	84.0	112.1
Credit Outstanding	92.6	123.7
II. Forward Commitment Capacity (FCC)	169.2	226.0
III. Unactivated Borrowed Resources, of which: 2/	391.7	523.0
NAB	282.6	377.3
Bilateral Borrowing Agreements	109.1	145.7
IV. Total GRA Resources (I. + II. + III.)	737.5	984.7



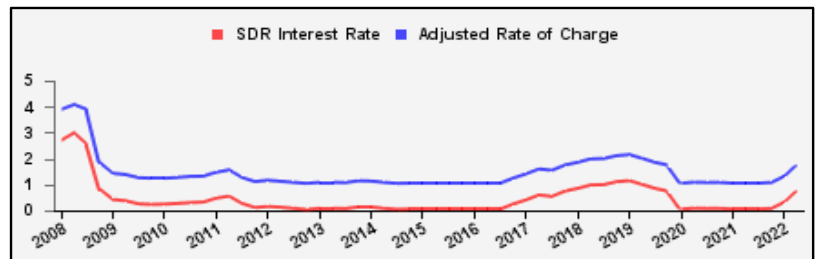
Forward Commitment Capacity (FCC)	SDR	USD
I. Usable resources (a) + (b)	315.2	420.8
(a) Fund quota resources	315.2	420.8
(b) Fund borrowed resources	--	--
II. Undrawn balances under GRA lending commitments	84.0	112.1
Precautionary 3/	51.4	68.7
Non-precautionary	32.5	43.4
III. Uncommitted usable resources (I - II)	231.2	308.7
IV. Repurchases one-year forward	19.1	25.5
V. Repayments of borrowed resources one-year forward	1.3	1.8
VI. Prudential balance	79.8	106.5
VII. Forward commitment capacity (III + IV - V - VI) 4/	169.2	226.0
(a) From Quota resources	169.2	226.0
(b) From NAB resources	--	--
(c) From Bilateral Borrowed resources	--	--



PRGT Lending and Resources	SDR	USD
I. Total Lending Commitments, of which:	19.0	25.3
Ia. Undrawn lending commitments	4.2	5.6
Ib. Loans Outstanding	14.8	19.7
II. Undrawn Loan Resources	23.4	31.3
III. Uncommitted Loan Resources (II. - Ia.)	19.3	25.7



Rates	Percent
1 SDR = USD	1.33524
SDR Interest Rate	0.789
Adjusted Rate of Charge	1.789
Adjusted Rate of Remuneration	0.789



1/ Figures highlighted in blue changed from previous issued report; -- Indicates zero value, zero indicates amounts less than SDR 0.05 billion. Totals may not add due to rounding.

2/ Excludes 20% prudential balance and borrowing lines of participants/members that are currently not in the FTP; for the NAB, also excludes borrowing lines of participants that have not yet adhered to the NAB as well as any outstanding NAB claims and undrawn committed resources under current NAB-eligible arrangements.

3/ Undrawn balances under arrangements treated as precautionary by the authorities.

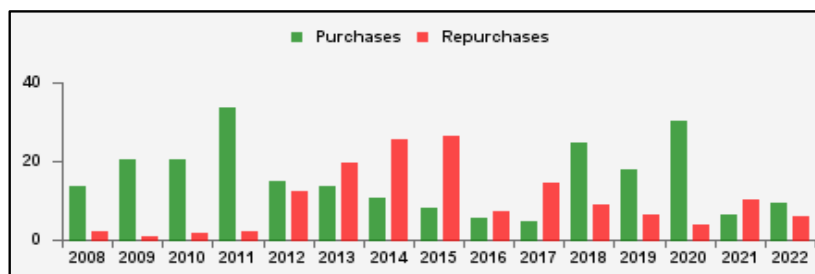
4/ In the event of activation of the NAB and/or bilateral borrowed resources, the FCC is modified to take account of additional usable resources under these arrangements (which exclude a prudential balance and non-FTP members).

Table 2a. Use of GRA Resources 1/

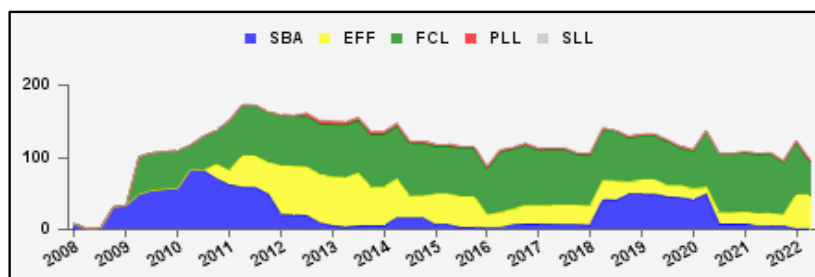
as of June 17, 2022

(In billions of SDRs, unless indicated otherwise)

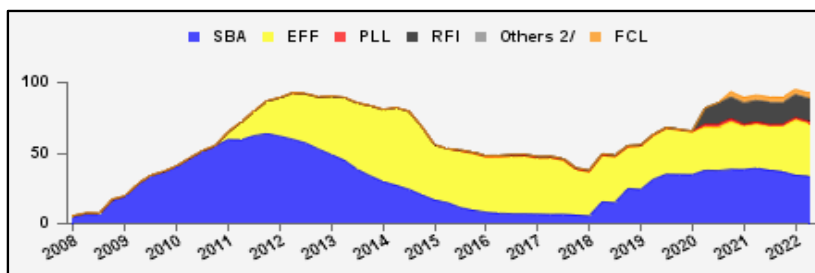
GRA Lending (Calendar year to date)	SDR	USD
Purchases	9.3	12.4
Financed by Quota Resources	9.3	12.4
Financed by Borrowings	--	--
Repurchases	6.1	8.2
Commitments Approved	46.9	62.7



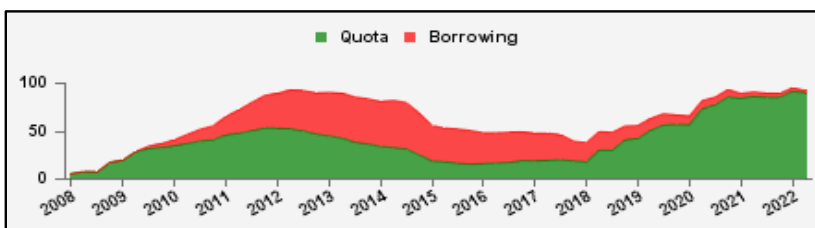
Commitments Under Current GRA Arrangements	Number of	SDR	USD
Standby Arrangement (SBA)	2	0.5	0.7
Extended Fund Facility (EFF)	14	47.3	63.1
Flexible Credit Line (FCL)	3	46.8	62.5
Precautionary and Liquidity Line (PLL)	1	1.9	2.5
Short-Term Liquidity Line (SLL)	1	2.5	3.4
Total Current Arrangements	21	99.0	132.2



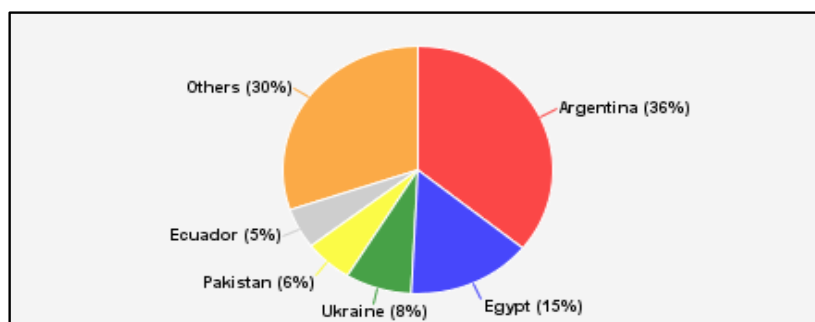
Credit Outstanding by Facility	SDR	USD
Standby Arrangement (SBA)	33.6	44.8
Extended Fund Facility (EFF)	37.3	49.8
Flexible Credit Line (FCL)	3.8	5.0
Precautionary and Liquidity Line (PLL)	1.5	2.0
Short-Term Liquidity Line (SLL)	--	--
Rapid Financing Instrument (RFI)	16.5	22.0
Others 2/	--	--
Total Credit Outstanding	92.6	123.7



Credit Outstanding by Financing Sources	SDR	USD
Financed by Quota Resources	90.2	120.5
Financed by Borrowings	2.4	3.2
Total Credit Outstanding	92.6	123.7



Largest 5 Exposures 3/	Credit Outstanding	
	SDR	As a % of quota
Argentina	33.2	1,042
Egypt	13.8	679
Ukraine	7.4	366
Pakistan	5.3	263
Ecuador	4.9	701



1/ Figures highlighted in blue changed from previous issued report; -- Indicates zero value, zero indicates amounts less than SDR 0.05 billion. Totals may not add due to rounding.

2/ Includes outstanding credit under the former Compensatory Financing Facility; for the chart also includes outstanding credit under the former Emergency Post Conflict and Natural Disaster Assistance policy.

3/ Members with current arrangements are bolded.

Table 2b. Current Financial Arrangements (GRA)

as of June 17, 2022

(In millions of SDRs, unless indicated otherwise) 1/

Member	Amount Committed	Amount Undrawn	Amount Drawn	Credit Outstanding		Period of Arrangement	
				Amount 2/	As a % of Quota	Effective Date	Expiration Date
Standby Arrangement (2)	512	340	173	865			
Georgia 3/	210	210	--	477	226	15-Jun-22	14-Jun-25
Senegal	302	129	173	388	120	07-Jun-21	06-Dec-22
Extended Fund Facility (14)	47,286	32,387	14,898	47,831			
Argentina	31,914	24,914	7,000	33,221	1,042	25-Mar-22	24-Sep-24
Barbados	322	--	322	322	341	01-Oct-18	17-Jun-22
Cameroon	322	184	138	138	50	29-Jul-21	28-Jul-24
Costa Rica	1,237	825	413	782	212	01-Mar-21	31-Jul-24
Ecuador	4,615	1,207	3,408	4,889	701	30-Sep-20	29-Dec-22
Equatorial Guinea	205	176	29	77	49	18-Dec-19	17-Dec-22
Ethiopia	752	662	90	391	130	20-Dec-19	19-Dec-22
Gabon	389	308	81	666	308	28-Jul-21	27-Jul-24
Jordan	1,070	480	590	1,088	317	25-Mar-20	24-Mar-24
Kenya	1,248	773	475	475	88	02-Apr-21	01-Jun-24
Moldova	396	315	82	280	162	20-Dec-21	19-Apr-25
Pakistan	4,268	2,124	2,144	5,344	263	03-Jul-19	02-Oct-22
Seychelles	74	26	48	80	349	29-Jul-21	28-Mar-24
Suriname	473	394	79	79	61	22-Dec-21	21-Dec-24
Flexible Credit Line (3)	46,810	46,810	--	3,750			
Colombia 3/	7,156	7,156	--	3,750	183	29-Apr-22	28-Apr-24
Mexico 3/	35,651	35,651	--	--	--	19-Nov-21	18-Nov-23
Peru 3/	4,004	4,004	--	--	--	27-May-22	26-May-24
Precautionary and Liquidity Line (1)	1,884	1,884	--	377			
Panama 3/	1,884	1,884	--	377	100	19-Jan-21	18-Jan-23
Short-Term Liquidity Line (1)	2,529	2,529	--	--			
Chile 3/	2,529	2,529	--	--	--	20-May-22	19-May-23
Total Current GRA Arrangements (21)	99,021	83,950	15,071	52,823			
Memorandum Items:							
Credit outstanding from members without current arrangement and outright disbursements.				39,820			
Total Credit Outstanding.				92,643			

1/ -- Indicates zero value, zero indicates amounts less than SDR 0.5 million. Totals may not add due to rounding.

2/ Includes Credit Outstanding under expired arrangements and outright disbursements.

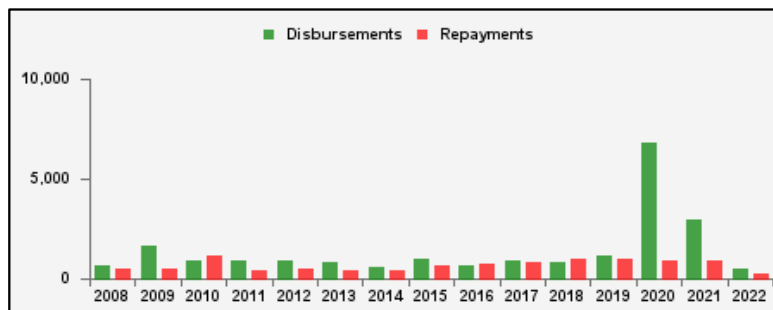
3/ The undrawn commitment of the arrangement is treated as precautionary by the authorities.

Table 3a. Use of Concessional PRGT Resources 1/

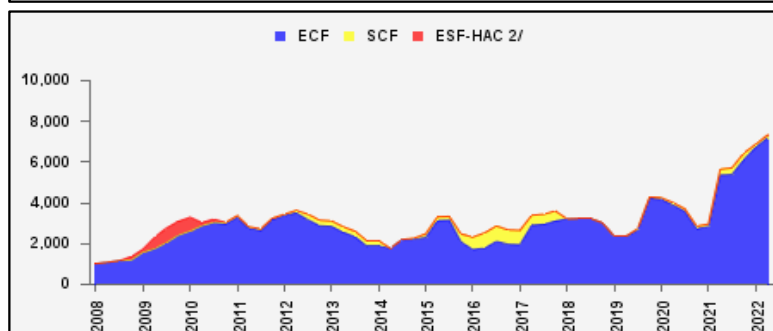
as of June 17, 2022

(In millions of SDRs, unless indicated otherwise)

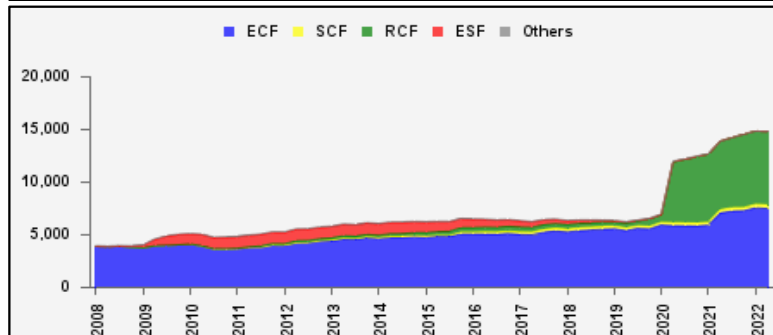
PRGT Lending (Calendar year to date)	SDR	USD
Disbursements	504.2	673.2
Repayments	272.1	363.4
Commitments Approved	1,057.0	1,411.4



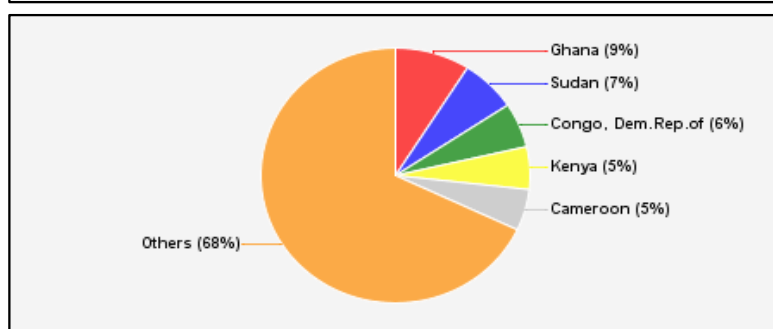
Commitments Under Current PRGT Arrangements	Number of	SDR	USD
Extended Credit Facility (ECF)	21	7,174.0	9,579.1
Standby Credit Facility (SCF)	1	151.0	201.6
Total Current Arrangements	22	7,325.0	9,780.7



Loans Outstanding by Facility	SDR	USD
Extended Credit Facility (ECF)	7,490.9	10,002.2
Standby Credit Facility (SCF)	353.4	471.9
Rapid Credit Facility (RCF)	6,942.6	9,270.0
(former) Exogenous Shocks Facility (ESF)	--	--
Others 3/	--	--
Total Loans Outstanding	14,786.9	19,744.1



Largest 5 Exposures 4/	Loans Outstanding	
	SDR	As a % of quota
Ghana	1,331.1	180
Sudan	991.6	157
Congo, Dem.Rep.of	837.6	79
Kenya	797.6	147
Cameroon	772.8	280



1/ Figures highlighted in blue changed from previous issued report; -- Indicates zero value, zero indicates amounts less than SDR 0.05 million. Totals may not add due to rounding.

2/ The last commitment under the old ESF-HAC Facility expired on December 3, 2011.

3/ Includes outstanding and overdue loans under the (former) Structural Adjustment Facility and Trust Fund.

4/ Members with current arrangements are bolded.

Table 3b. Current Financial Arrangements (PRGT)

as of June 17, 2022

(In millions of SDRs, unless indicated otherwise) 1/

Member	Amount Committed	Amount Undrawn	Amount Drawn	Loans Outstanding		Period of Arrangement	
				Amount 2/	As a % of Quota	Effective Date	Expiration Date
Extended Credit Facility (21)	7,174	4,107	3,067	8,297			
Afghanistan	259	74	185	380	117	06-Nov-20	05-May-24
Cabo Verde	45	34	11	35	148	15-Jun-22	14-Jun-25
Cameroon	161	92	69	773	280	29-Jul-21	28-Jul-24
Central African Rep.	84	48	36	209	188	20-Dec-19	19-Dec-22
Chad	393	336	56	459	327	10-Dec-21	09-Dec-24
Congo, Dem.Rep.of	1,066	761	305	838	79	15-Jul-21	14-Jul-24
Congo, Rep. of	324	259	65	97	60	21-Jan-22	20-Jan-25
Gambia	55	10	45	77	124	23-Mar-20	22-Jun-23
Kenya	407	195	212	798	147	02-Apr-21	01-Jun-24
Liberia	155	87	68	197	76	11-Dec-19	10-Dec-23
Madagascar	220	122	98	626	256	29-Mar-21	28-Jul-24
Mali	140	60	80	402	215	28-Aug-19	27-Aug-22
Moldova	198	114	84	185	107	20-Dec-21	19-Apr-25
Mozambique	341	273	68	418	184	09-May-22	08-May-25
Nepal	282	204	79	260	166	12-Jan-22	11-Mar-25
Niger	197	158	39	298	226	08-Dec-21	07-Dec-24
Sao Tome-Principe	15	4	11	24	160	02-Oct-19	01-Feb-23
Sierra Leone	124	47	78	380	183	30-Nov-18	29-Jun-23
Somalia	253	35	218	218	133	25-Mar-20	24-Dec-23
Sudan	1,733	742	992	992	157	29-Jun-21	28-Sep-24
Uganda	722	451	271	632	175	28-Jun-21	27-Jun-24
Standby Credit Facility (1)	151	65	86	194			
Senegal	151	65	86	194	60	07-Jun-21	06-Dec-22
Total Current PRGT Arrangements (22)	7,325	4,171	3,154	8,491			
Memorandum Items:							
Credit outstanding from members without current arrangement and outright loans.					6,296		
Total Credit Outstanding.					14,787		

1/ -- Indicates zero value, zero indicates amounts less than SDR 0.5 million. Totals may not add due to rounding.

2/ Includes Loans Outstanding under expired arrangements and outright loans.