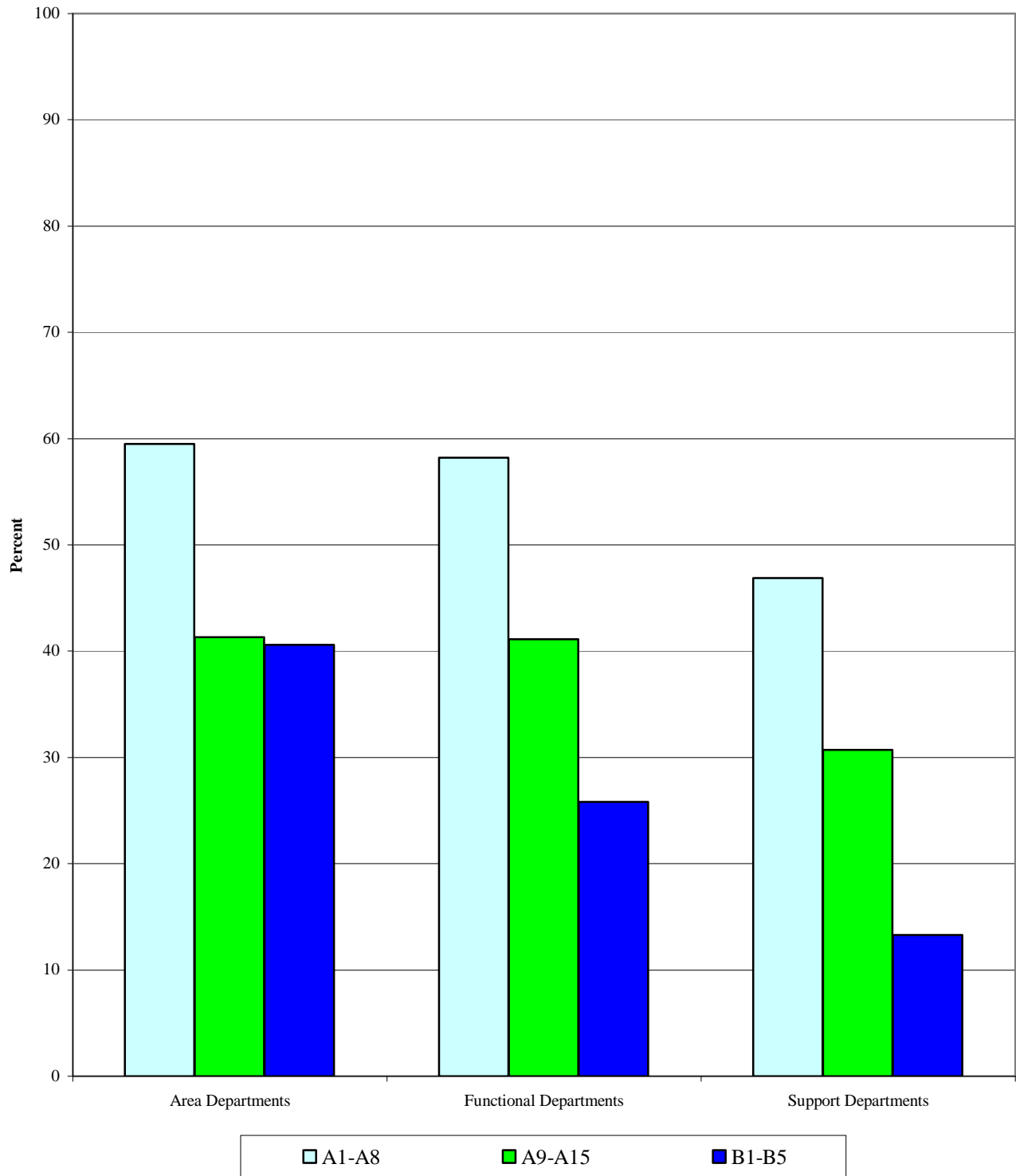


Figure 1. Share of Developing Country Nationals by Department Type and Grade Grouping ^{1/}



1/ Total in each grade group is all developing country and industrial country staff.

Figure 2a. Share of A9-A15 Developing Country Nationals by Department

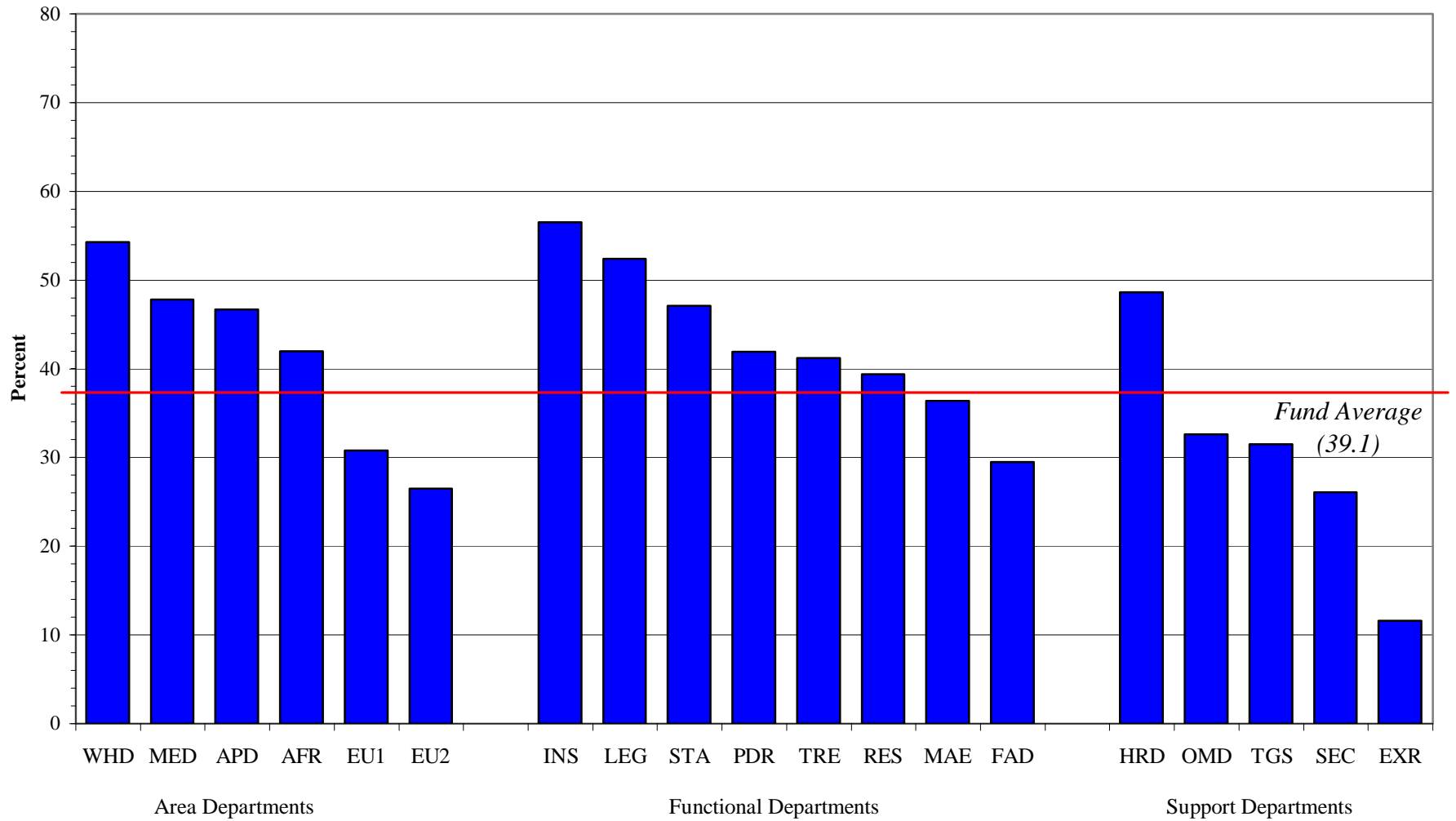


Figure 2b. Share of B1-B5 Developing Country Nationals by Department

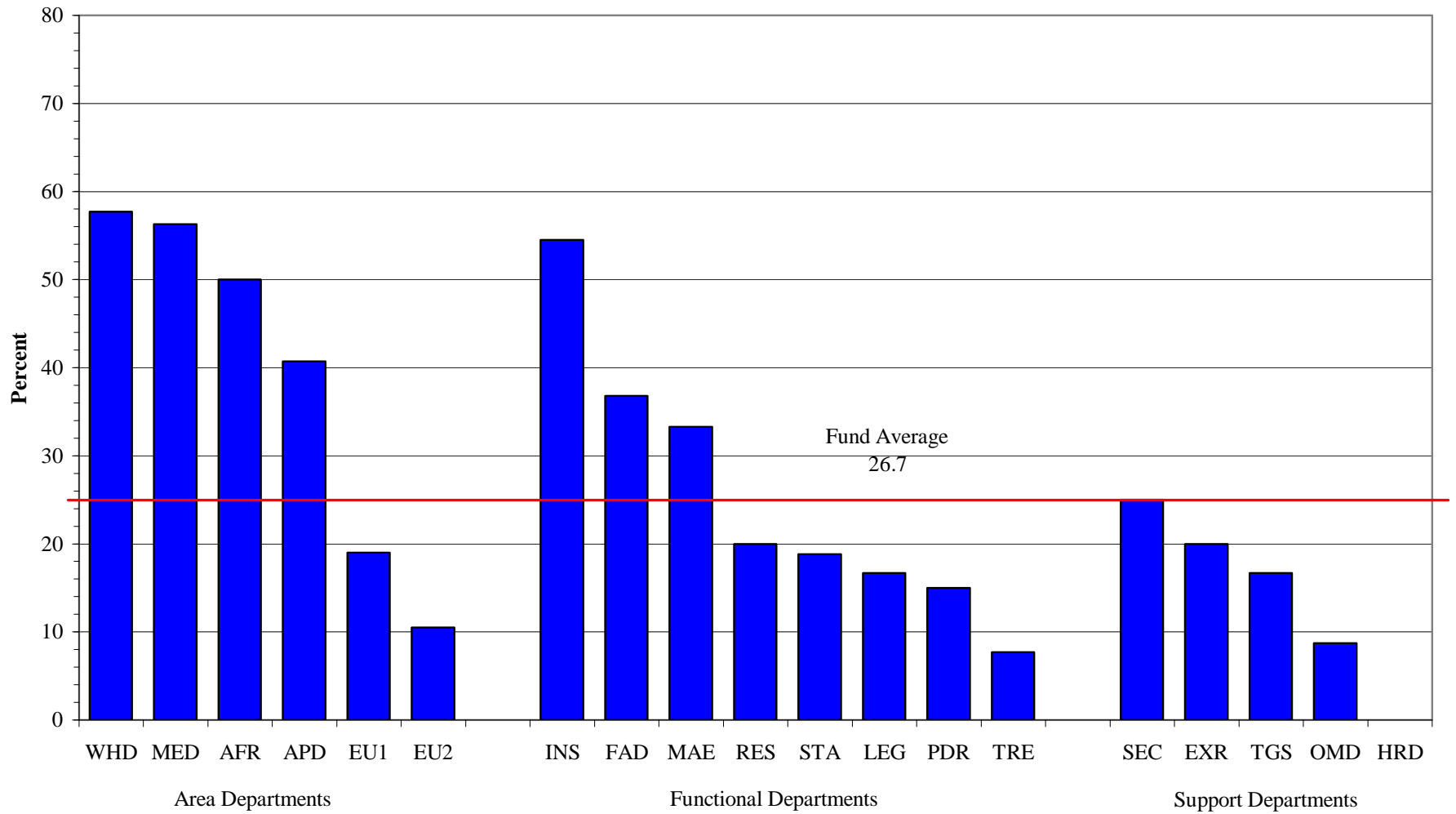
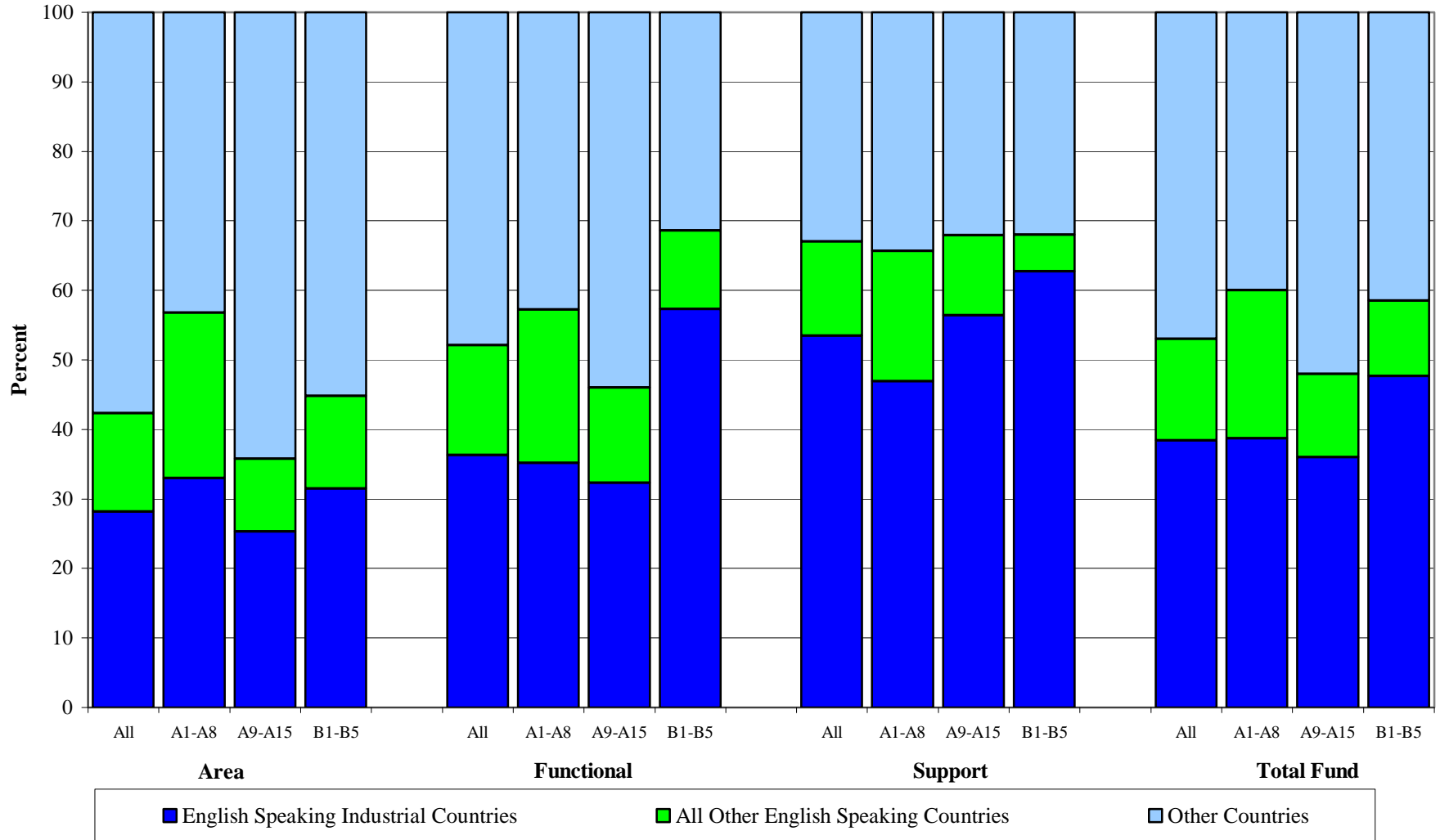
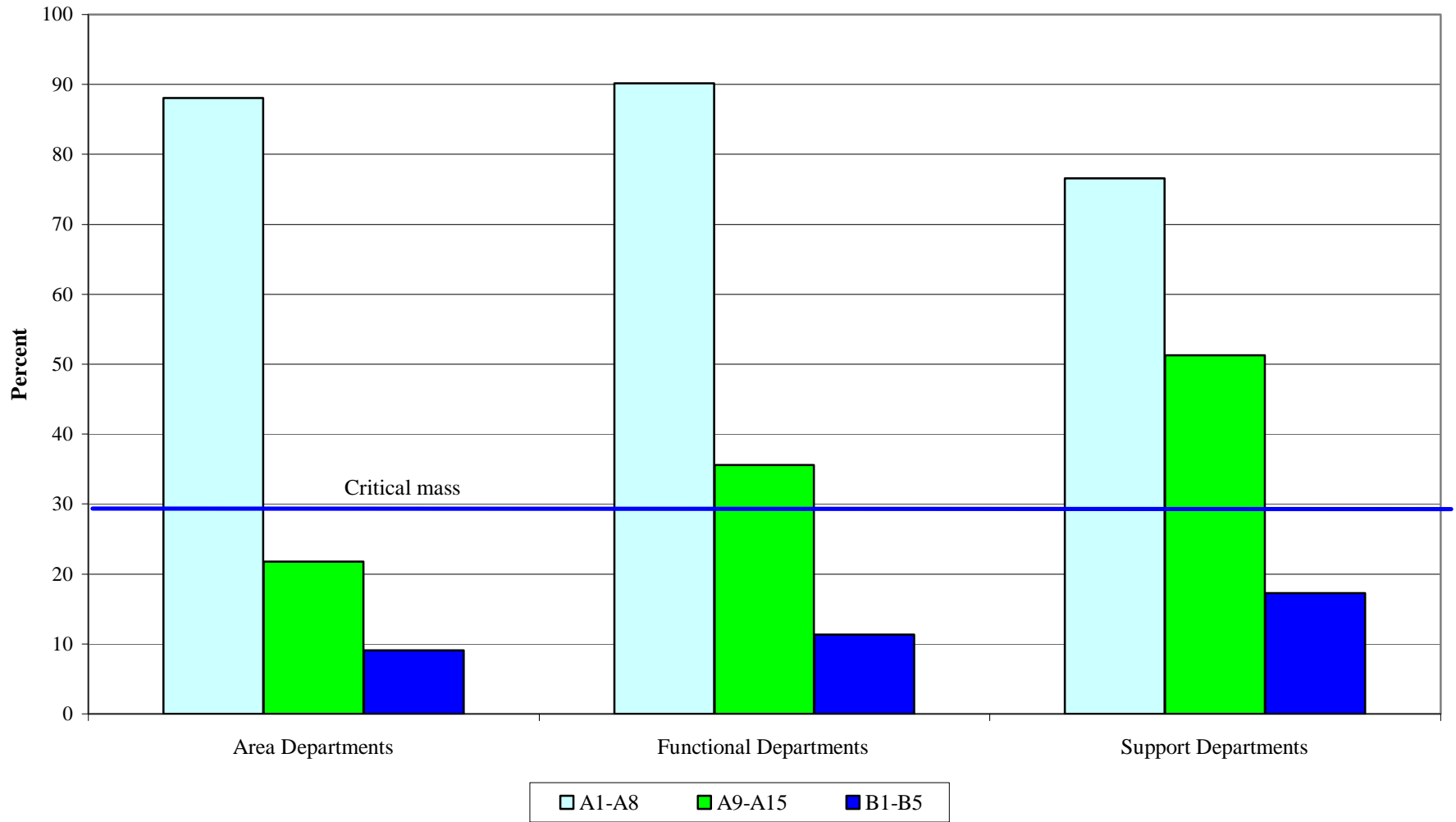


Figure 3. Staff by English Speaking Industrial Countries and Other English Speaking Industrial Countries, by Department Type and Grade Grouping ^{1/}



^{1/} 100% is all staff in the respective grade group.

Figure 4. Share of Women by Department Type and Grade Grouping ^{1/}



1/ Total in each grade group is all women and men.

Figure 5a. Share of A9-A15 Women by Department

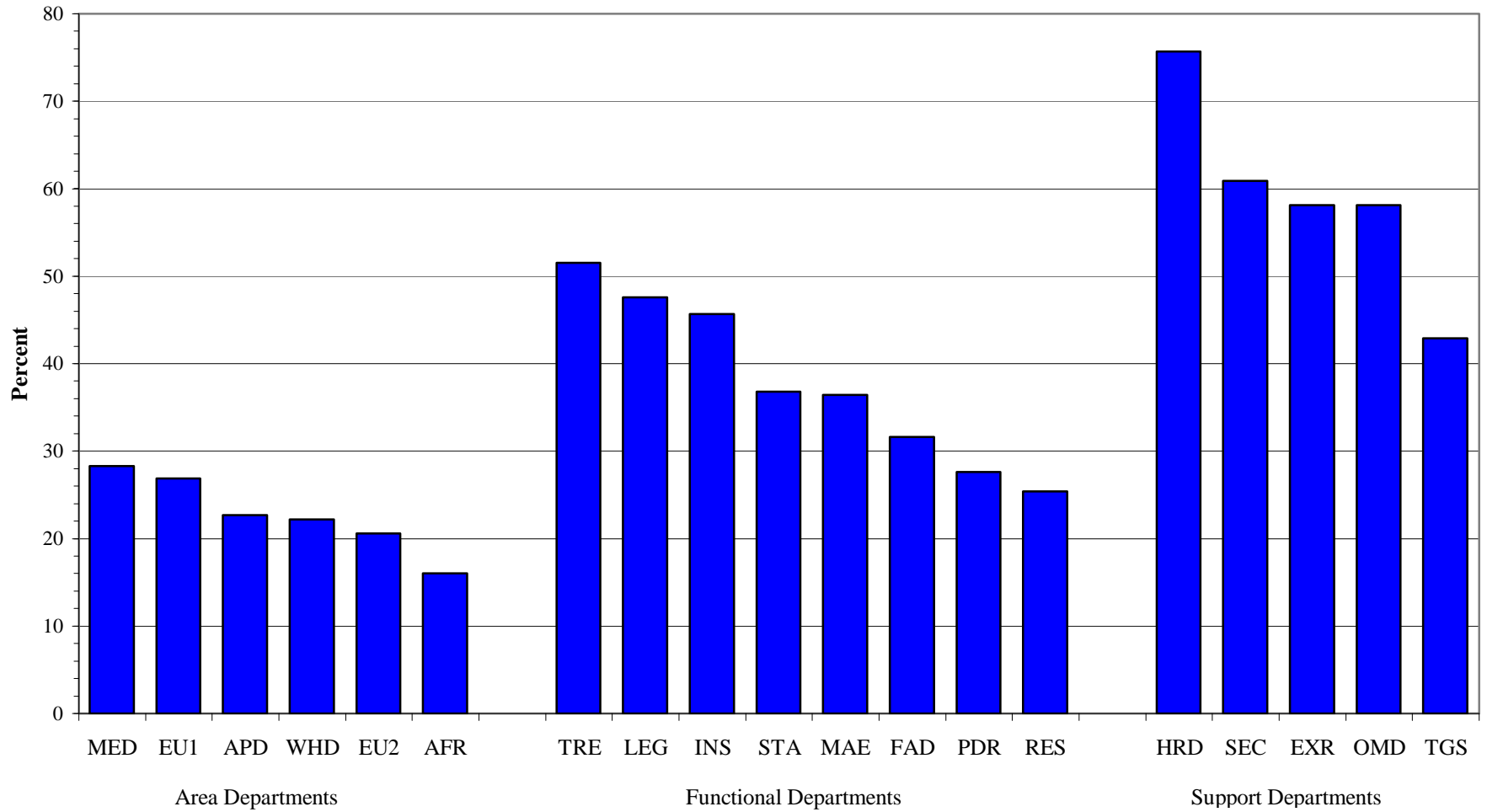


Figure 5b. Share of B1-B5 Women by Department

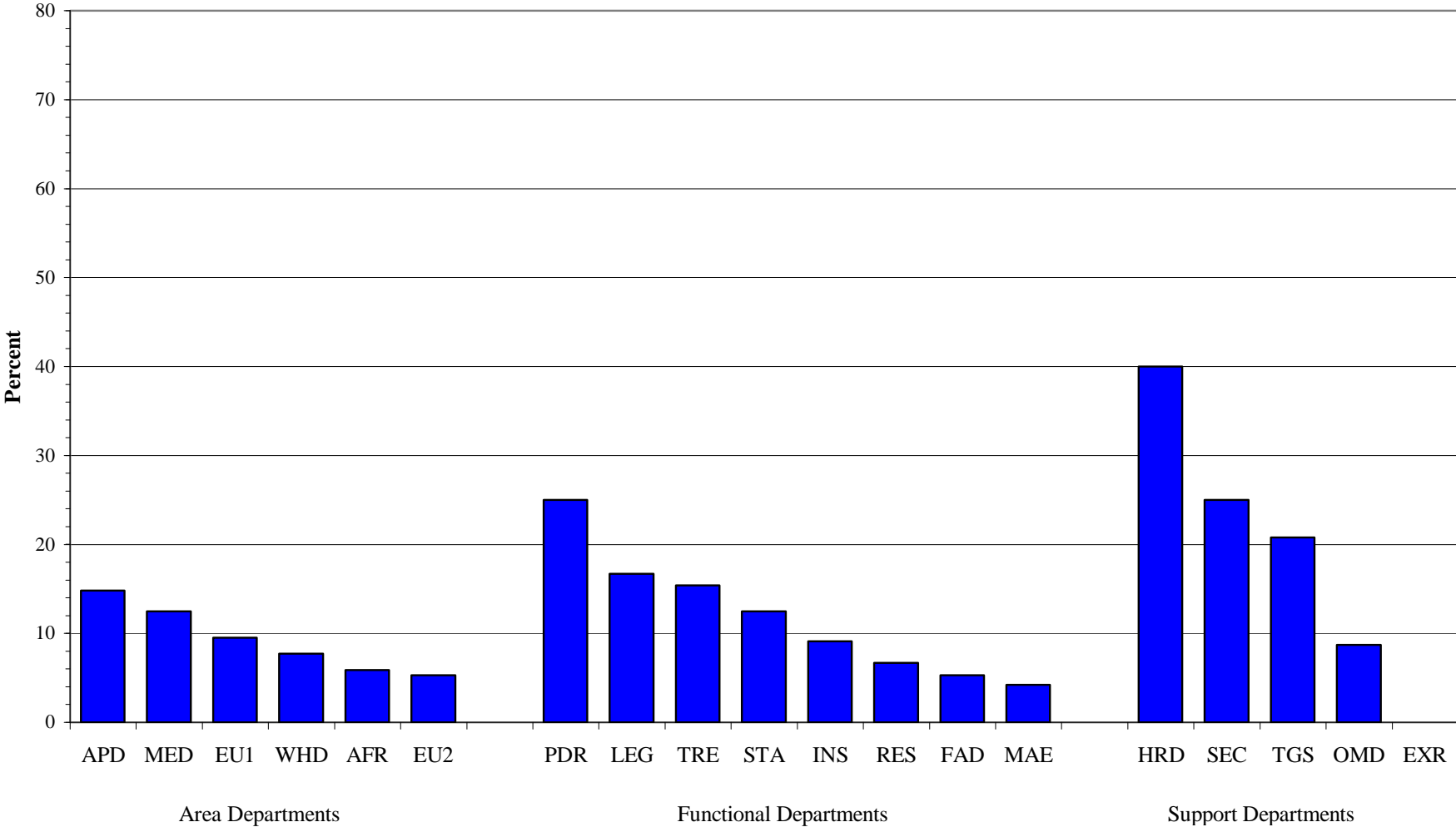


Figure 6. Staff by Developing/Industrial Country, Career Stream, and Grade Grouping

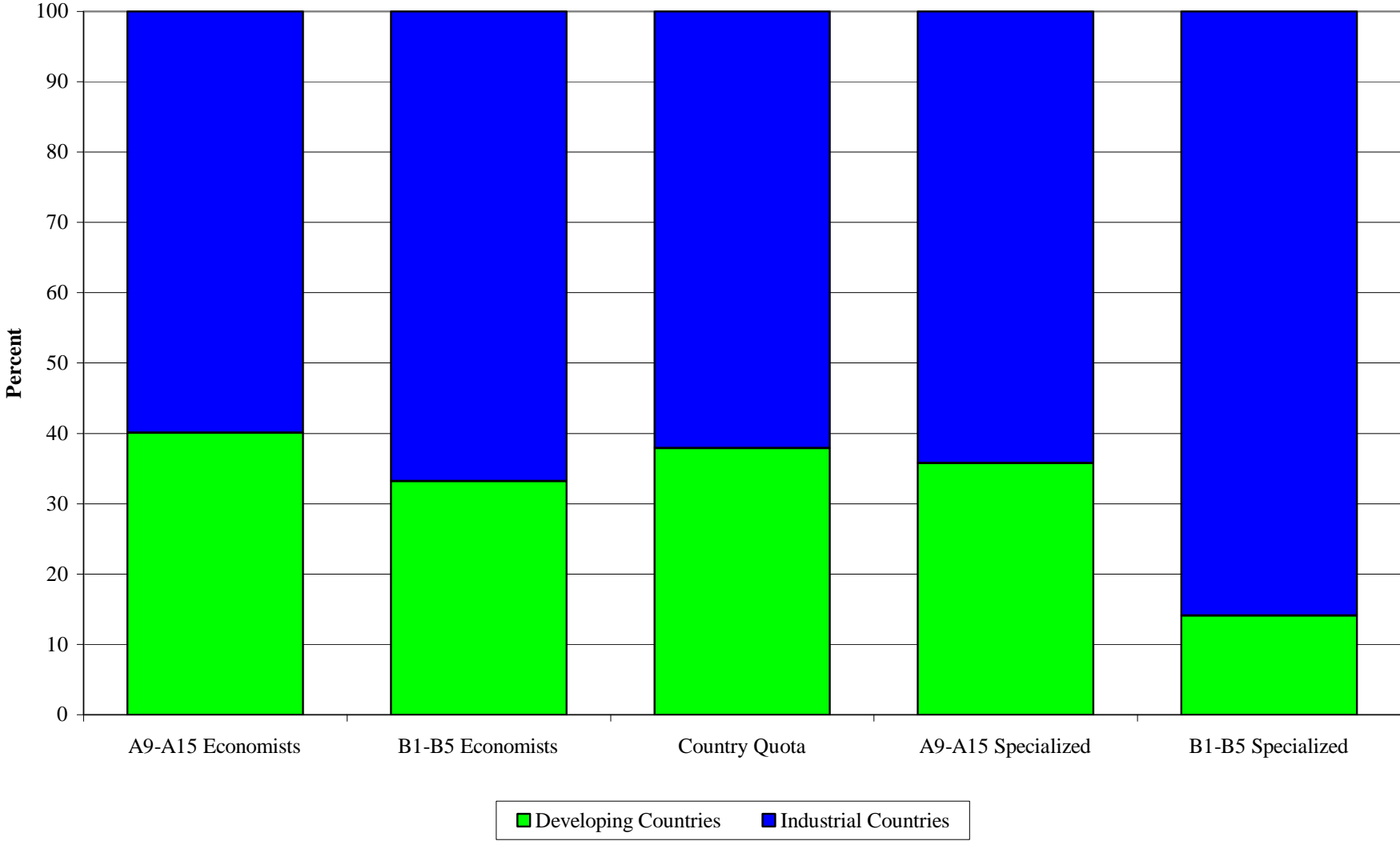


Figure 7. Share of Developing Country Nationals by Career Stream and Grade Grouping, 1996-2000

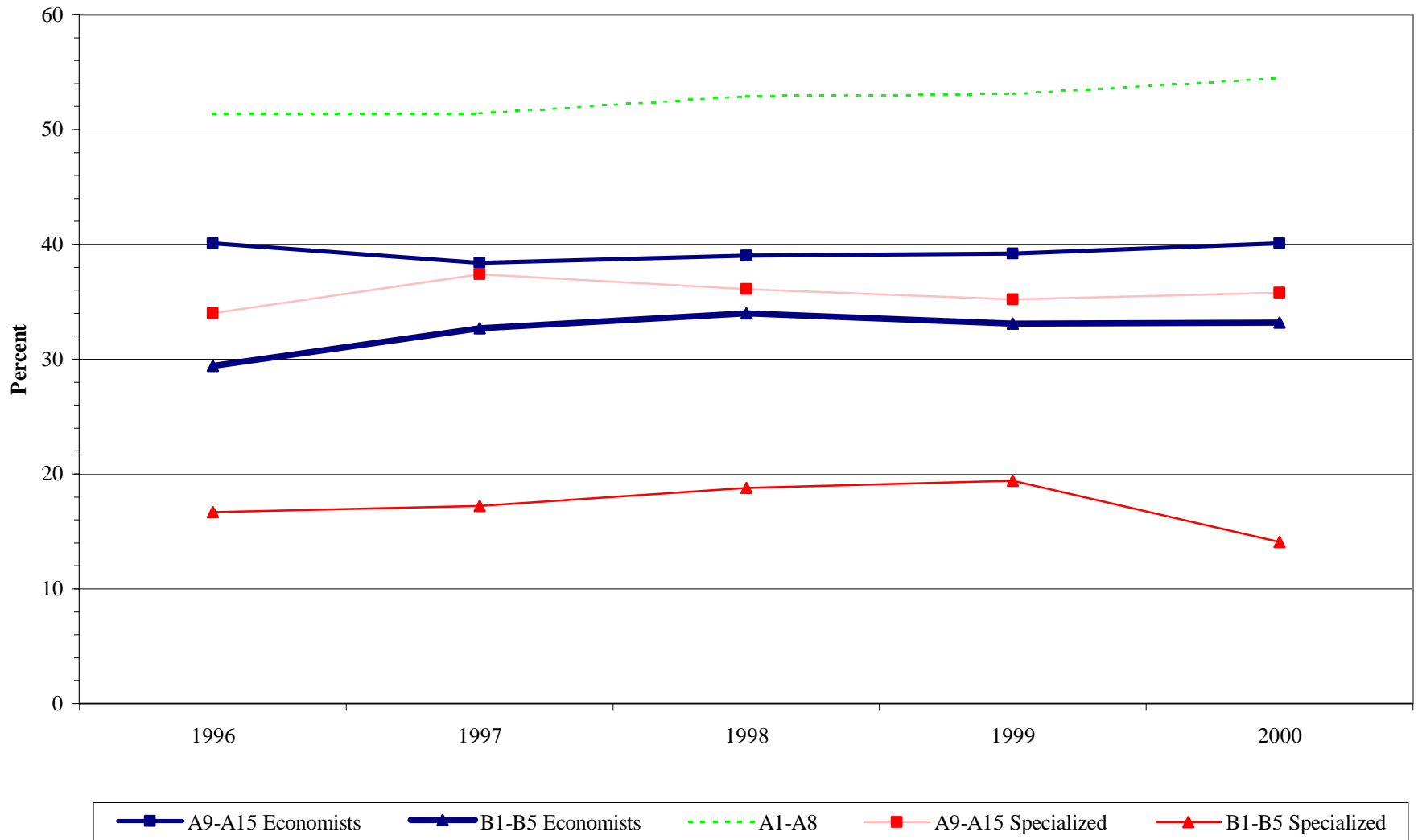


Figure 8. Staff by Region, Career Stream, and Grade Grouping

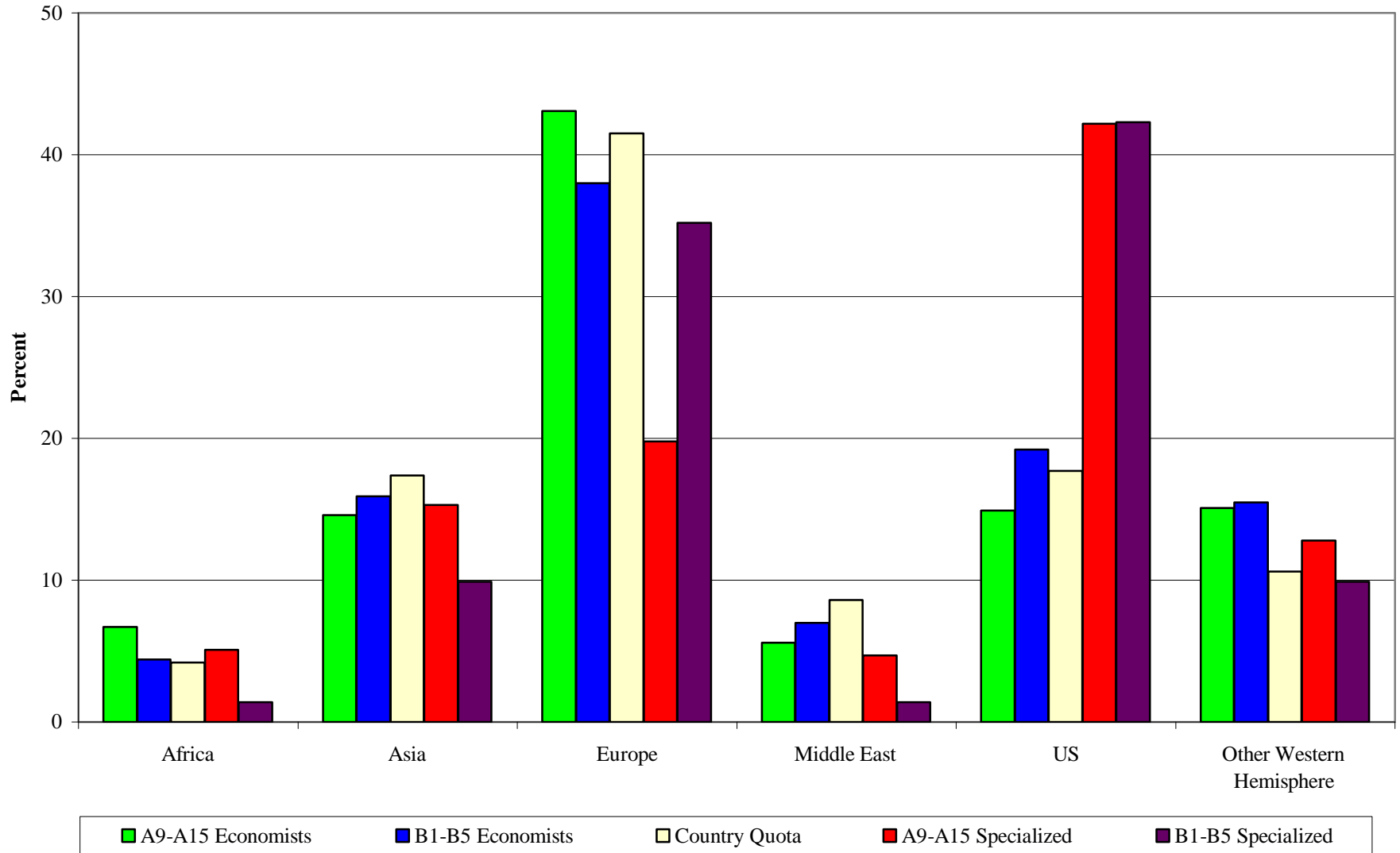


Figure 9. Staff by Gender, Career Stream, and Grade Grouping

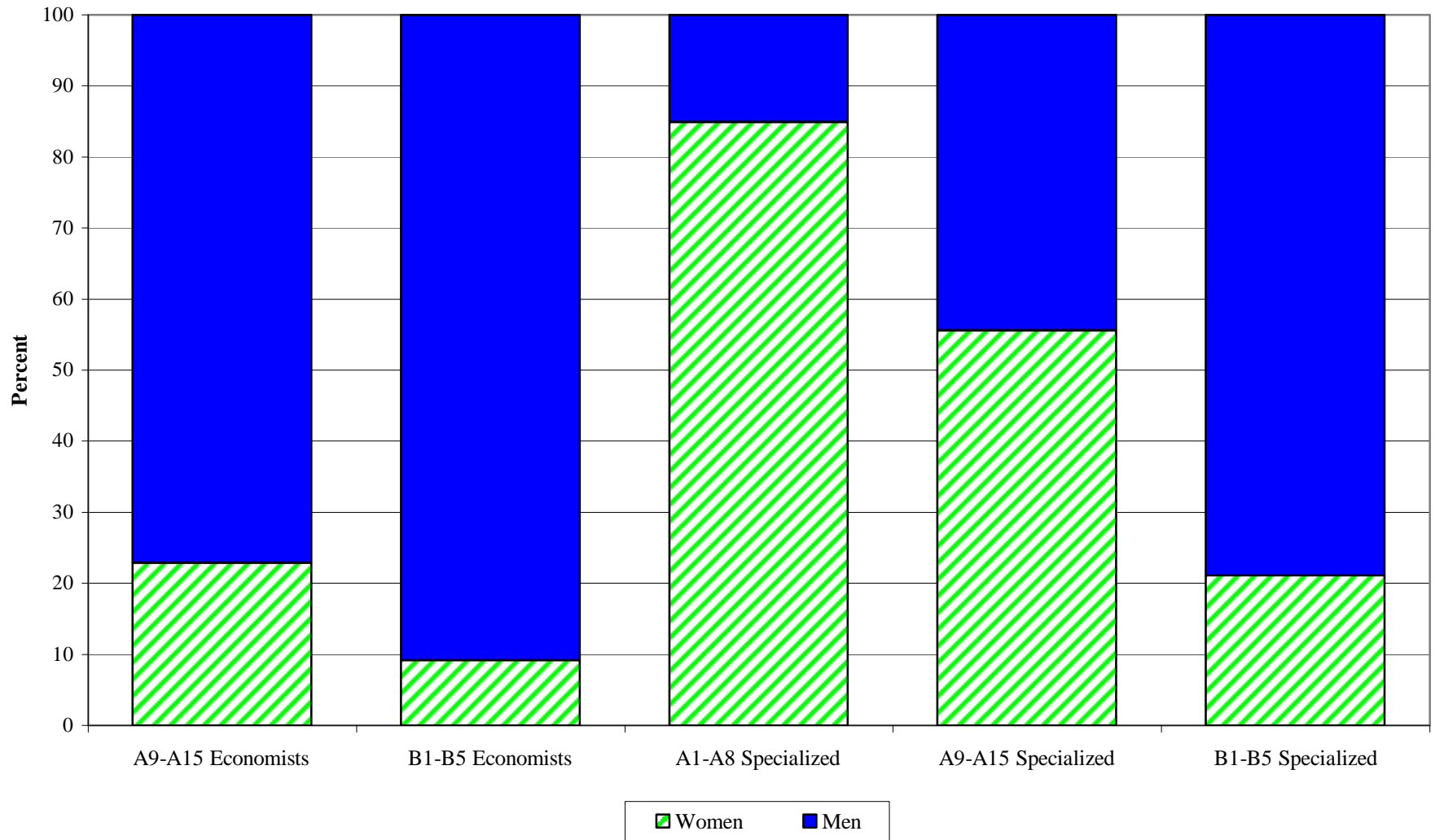


Figure 10. Share of Women by Career Stream and Grade Grouping

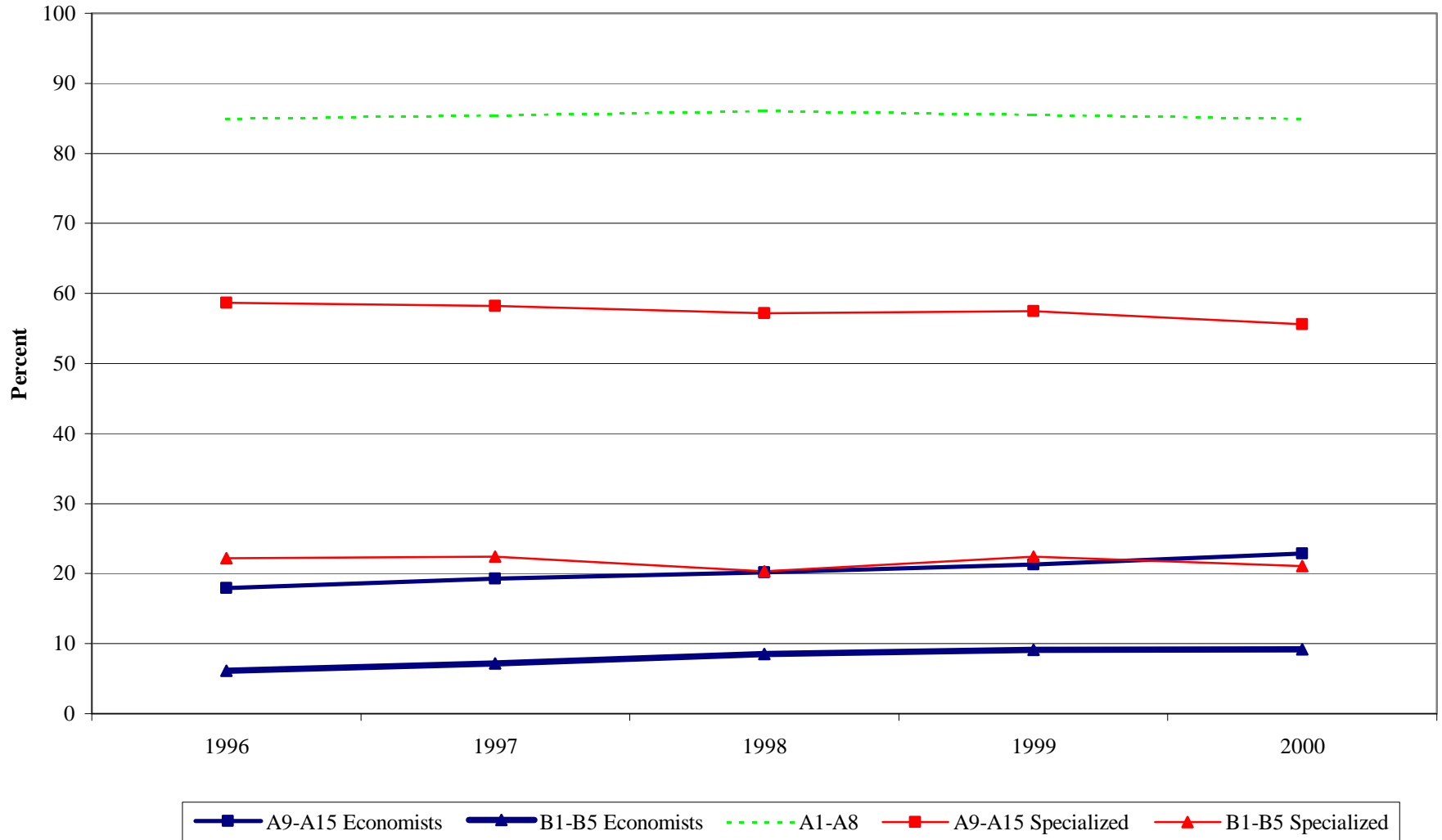
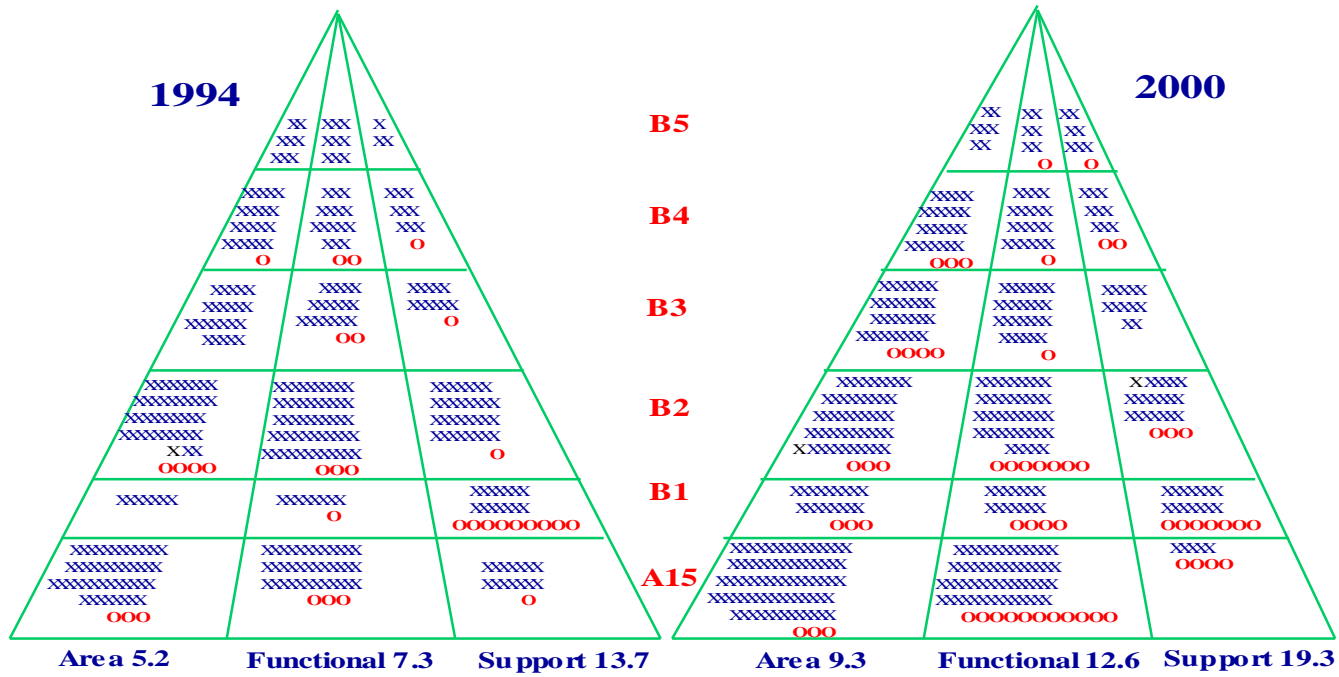


Figure 11. The Gender Pyramid. Women (O) and Men (X) Grades A15-B5 in 1994 and 2000



**Figure 12. Recruitment of Developing Country Nationals
by Career Stream in Grade Group A9-A15, 1996-2000**

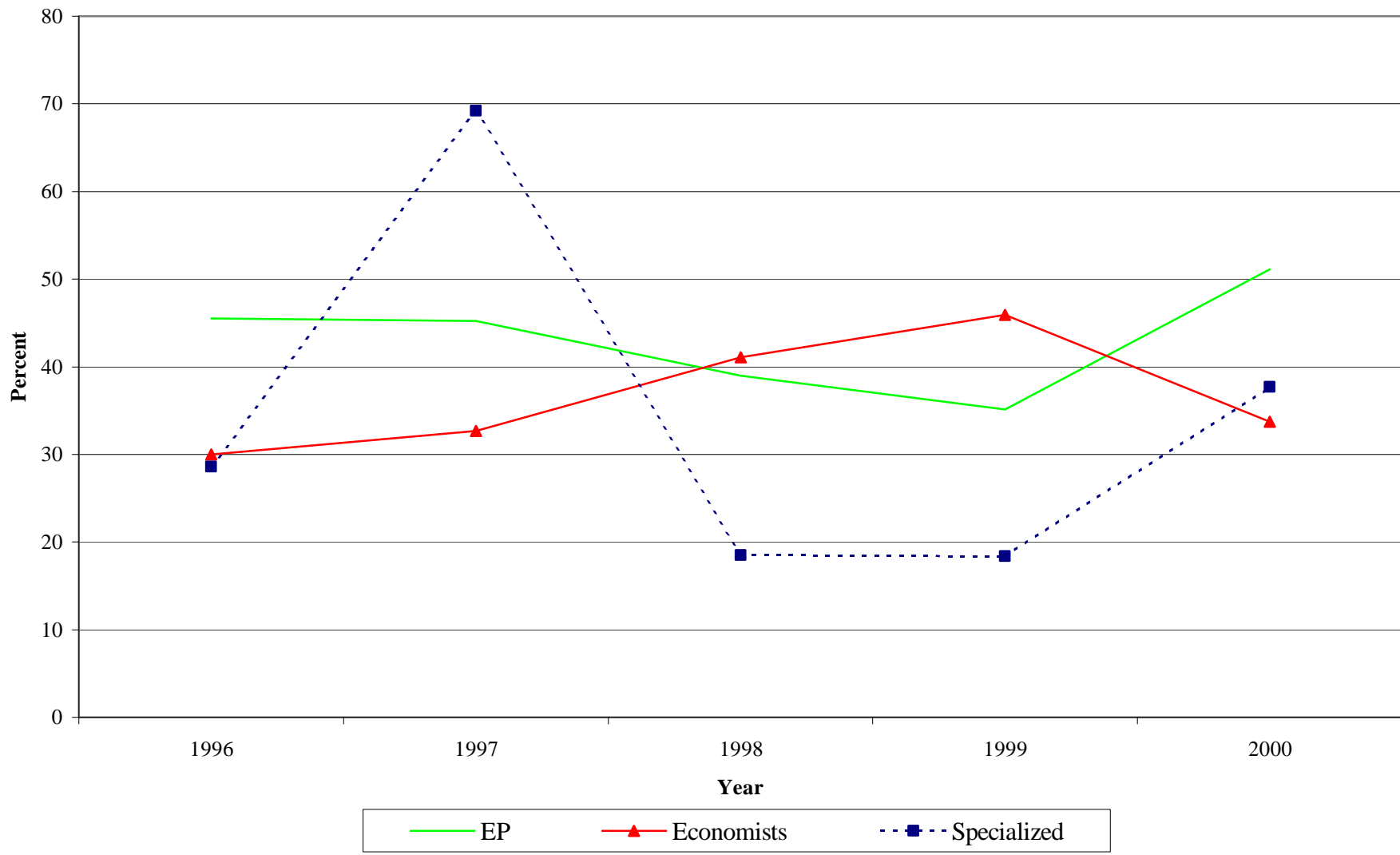


Figure 13. Recruitment of Women by Career Stream in Grade Group A9-A15, 1996-2000

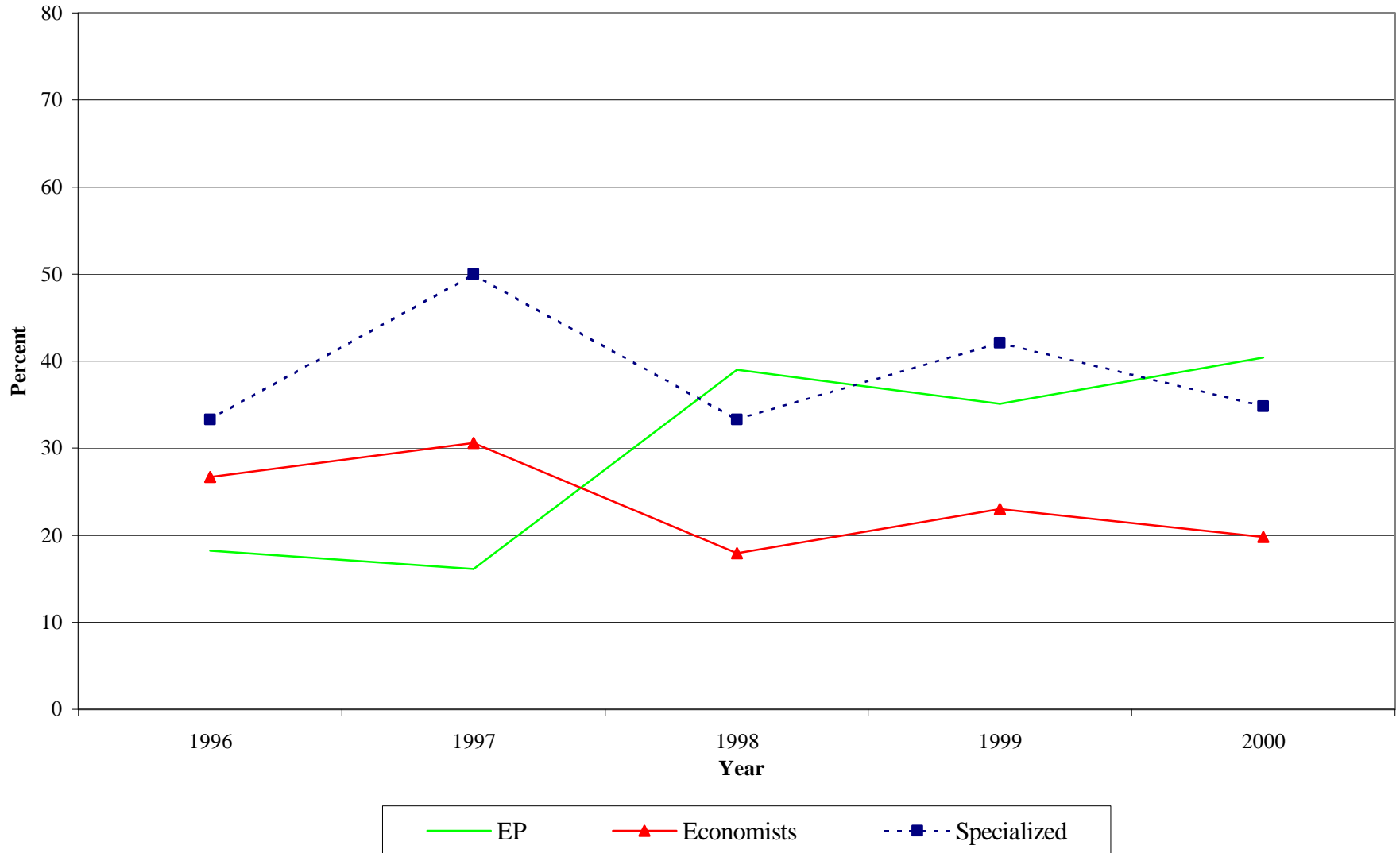


Figure 14. Mobility by Developing/Industrial Country and Grade Grouping, 1996-2000

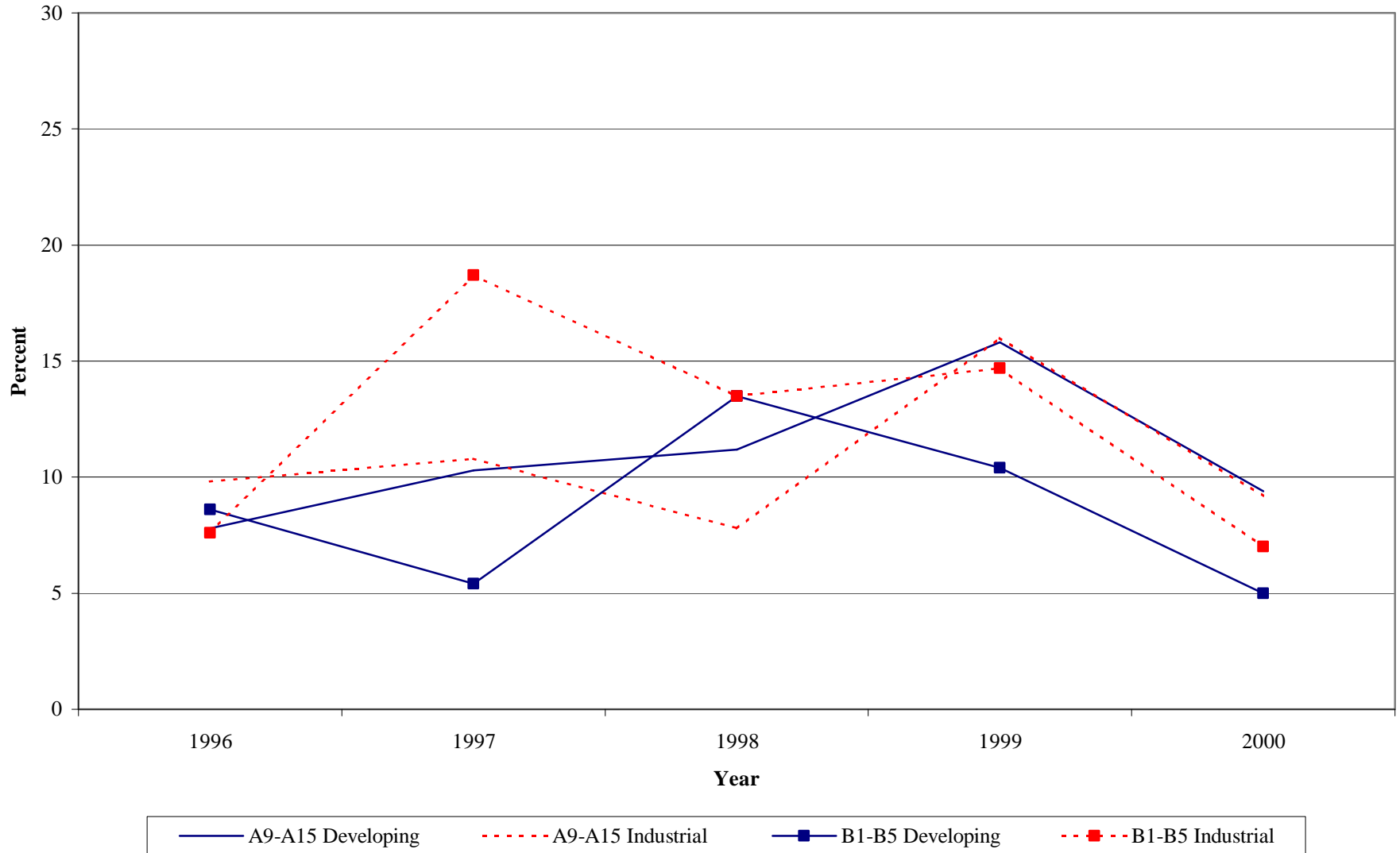
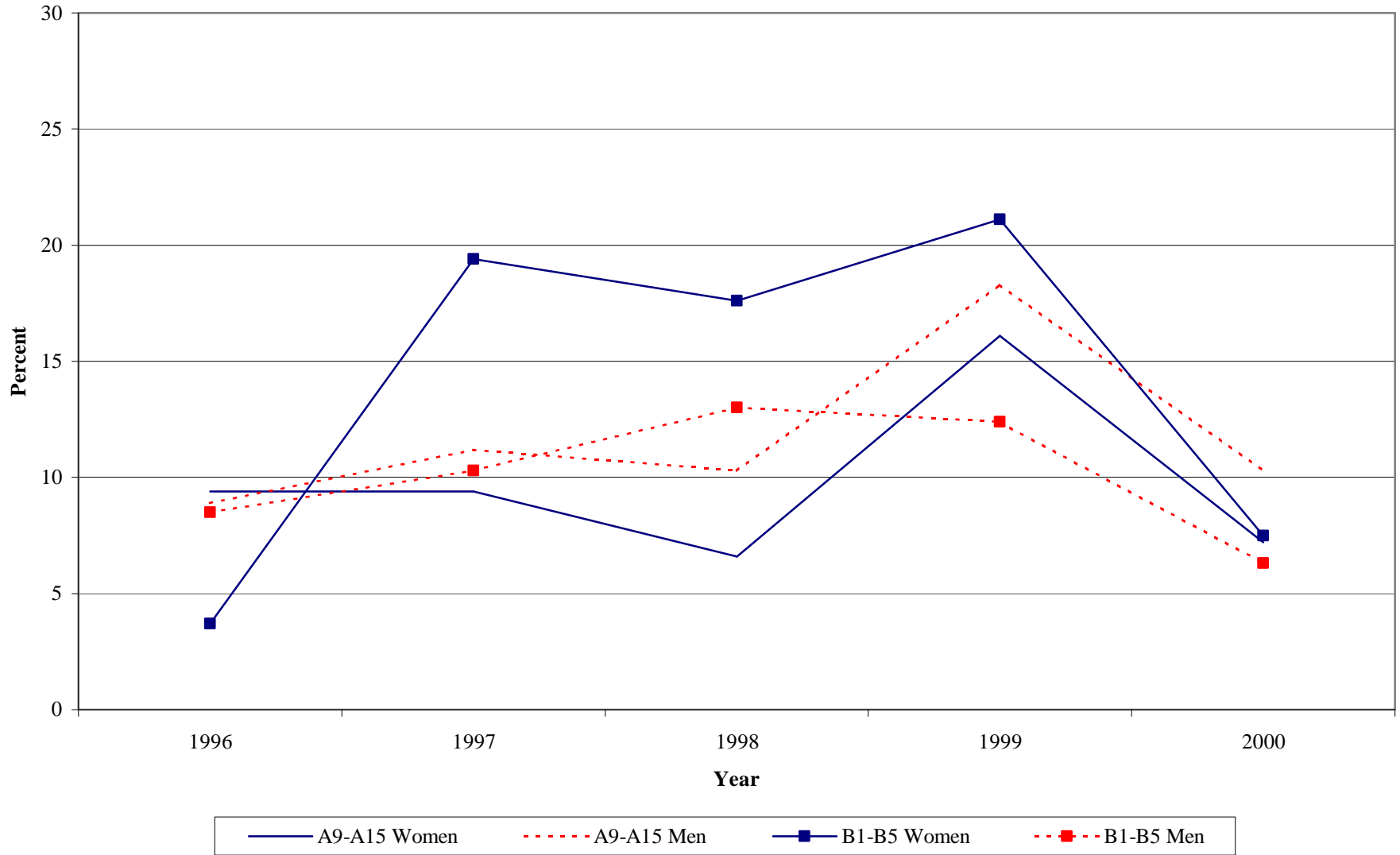
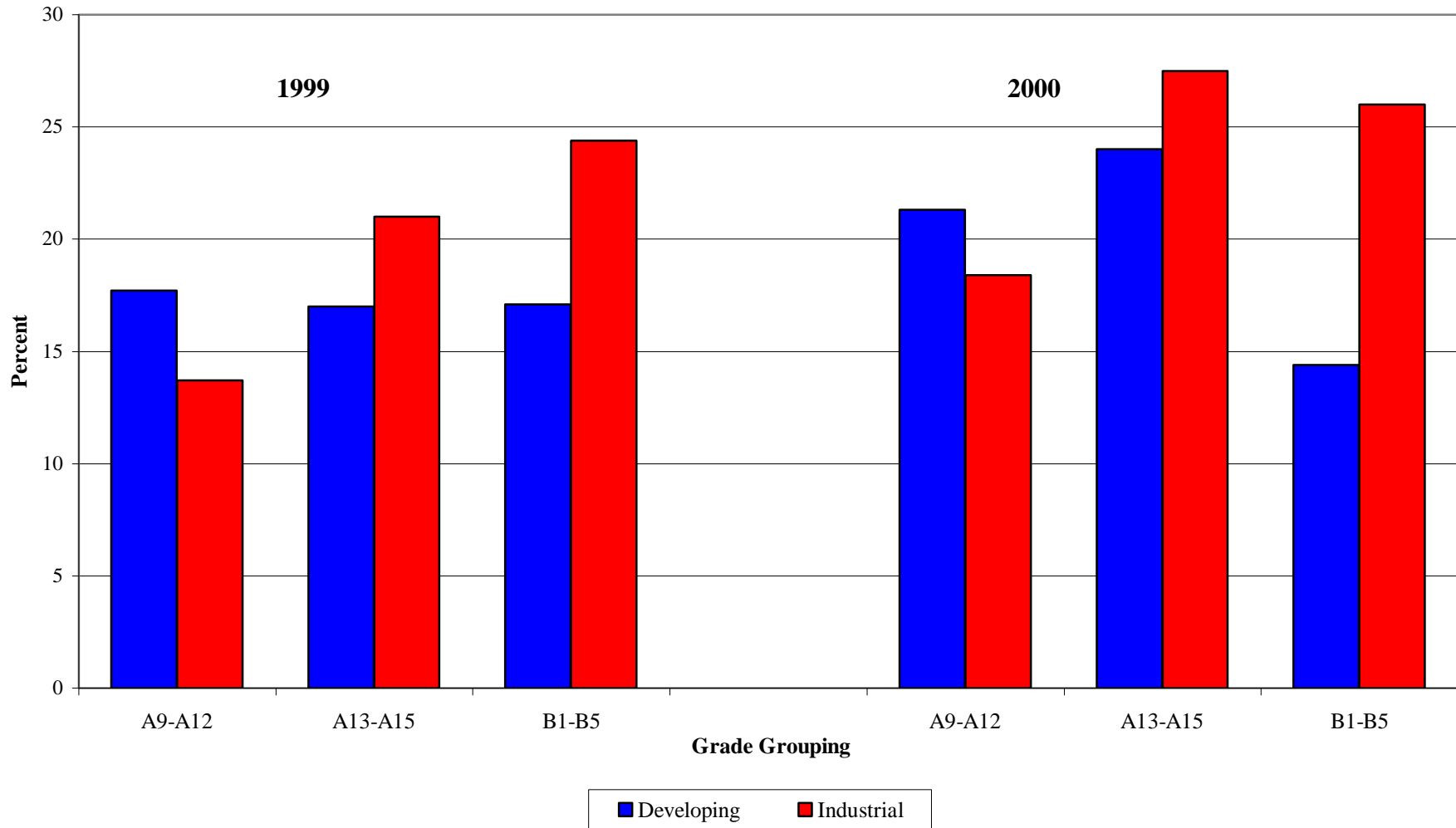


Figure 15. Mobility by Gender and Grade Grouping, 1996-2000

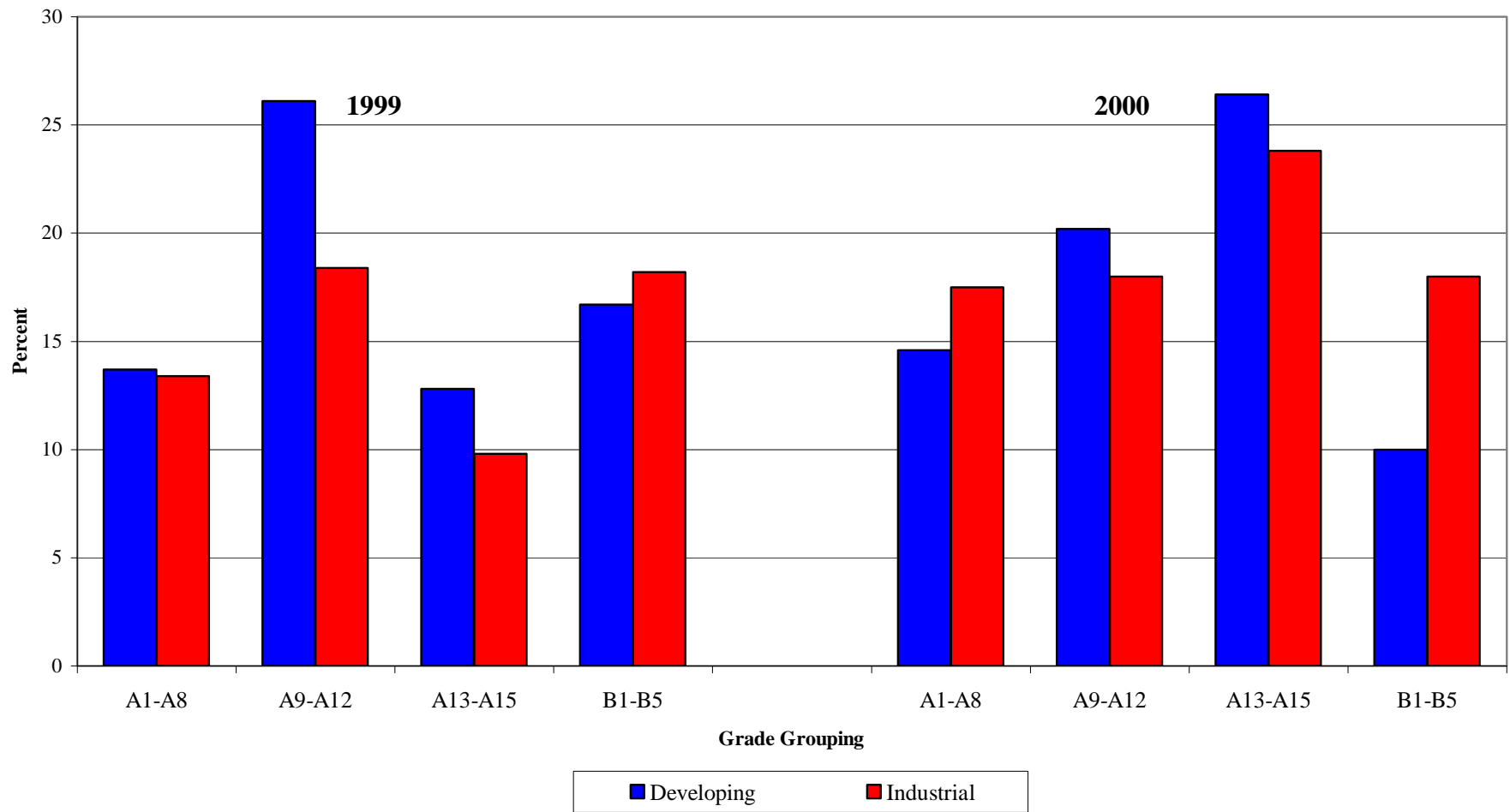


**Figure 16. Staff Promoted by Developing/Industrial Country and Grade Grouping:
Economists, 1999-2000 ^{1/}**



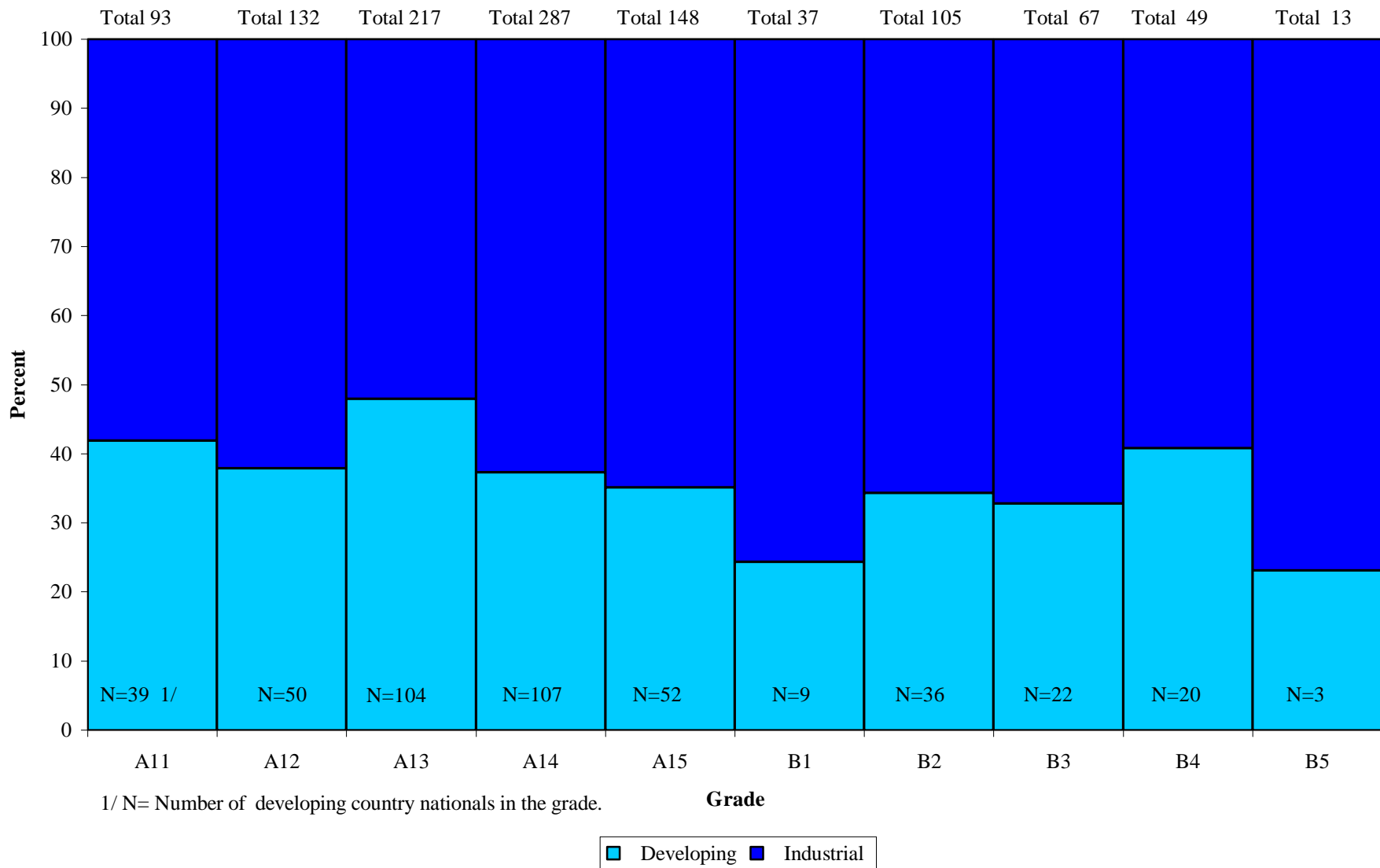
^{1/} Total is all staff in the respective grade group.

Figure 17. Staff promoted by Developing/Industrial Country and Grade Grouping: Specialized Career Streams, 1999-2000



1/ Total is all staff in the respective grade group.

Figure 18. Share of Developing and Industrial Country Nationals by Grade A11-B5: Economists



**Figure 19. Share of Developing and Industrial Country Nationals by Grade A11-B5:
Specialized Career Streams**

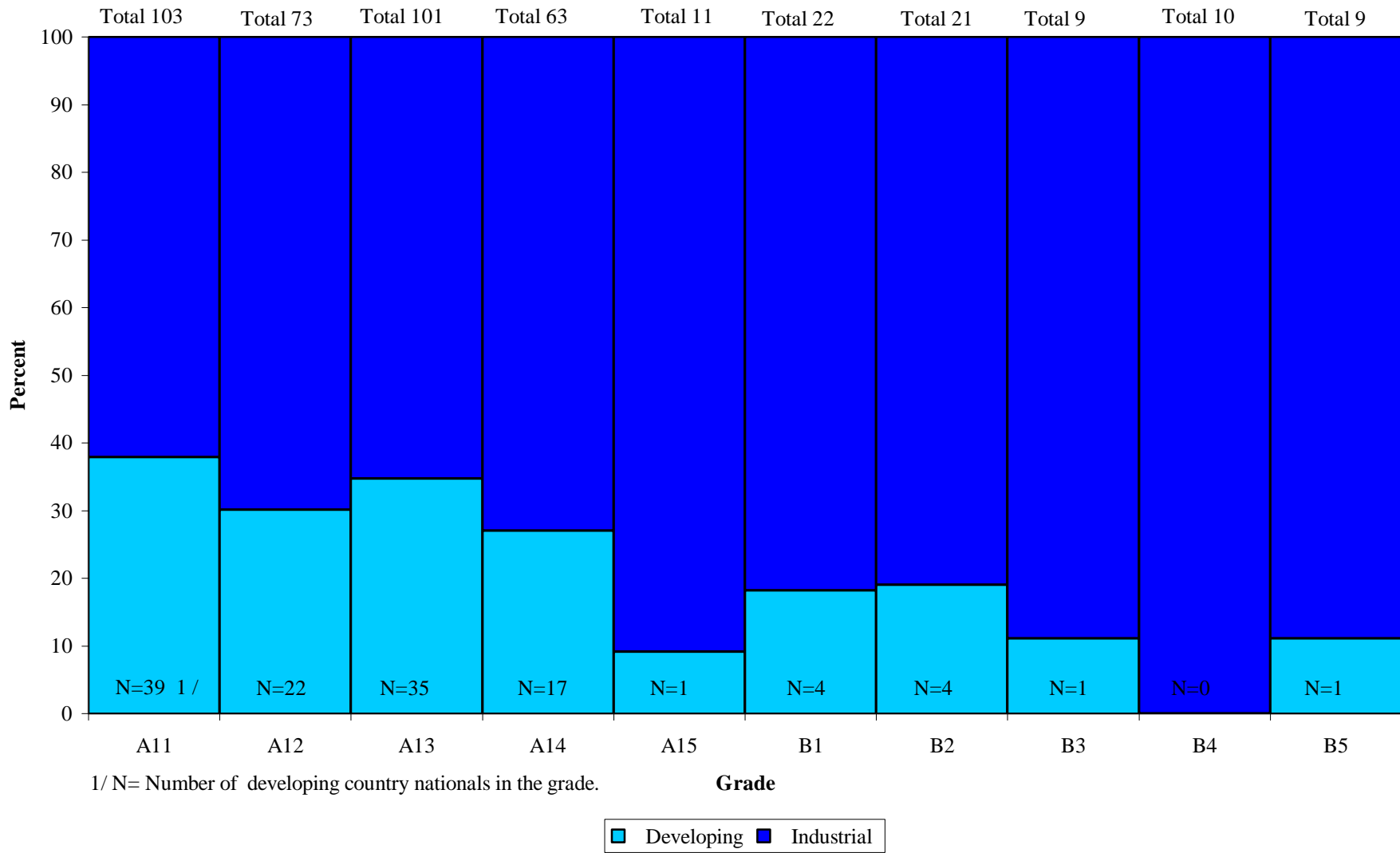


Figure 20. The Region Pyramid: African (O) and Middle Eastern (+) Staff in Grades A15-B5 in 1994 and 2000 by Department Type

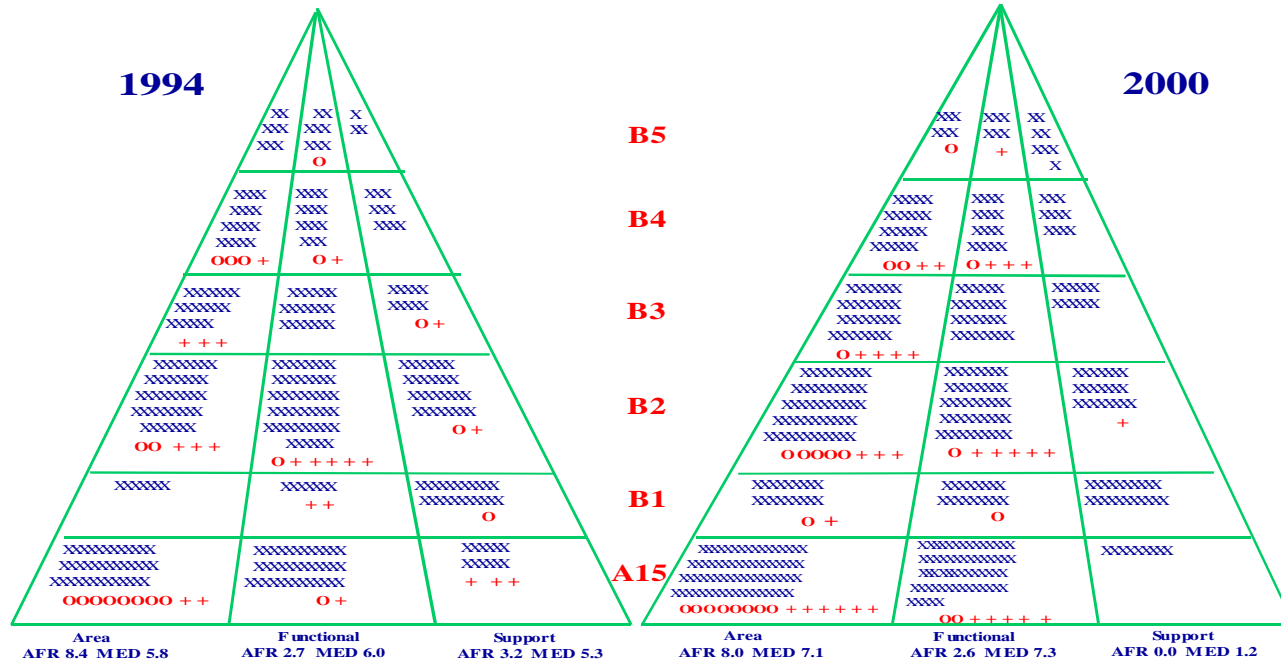
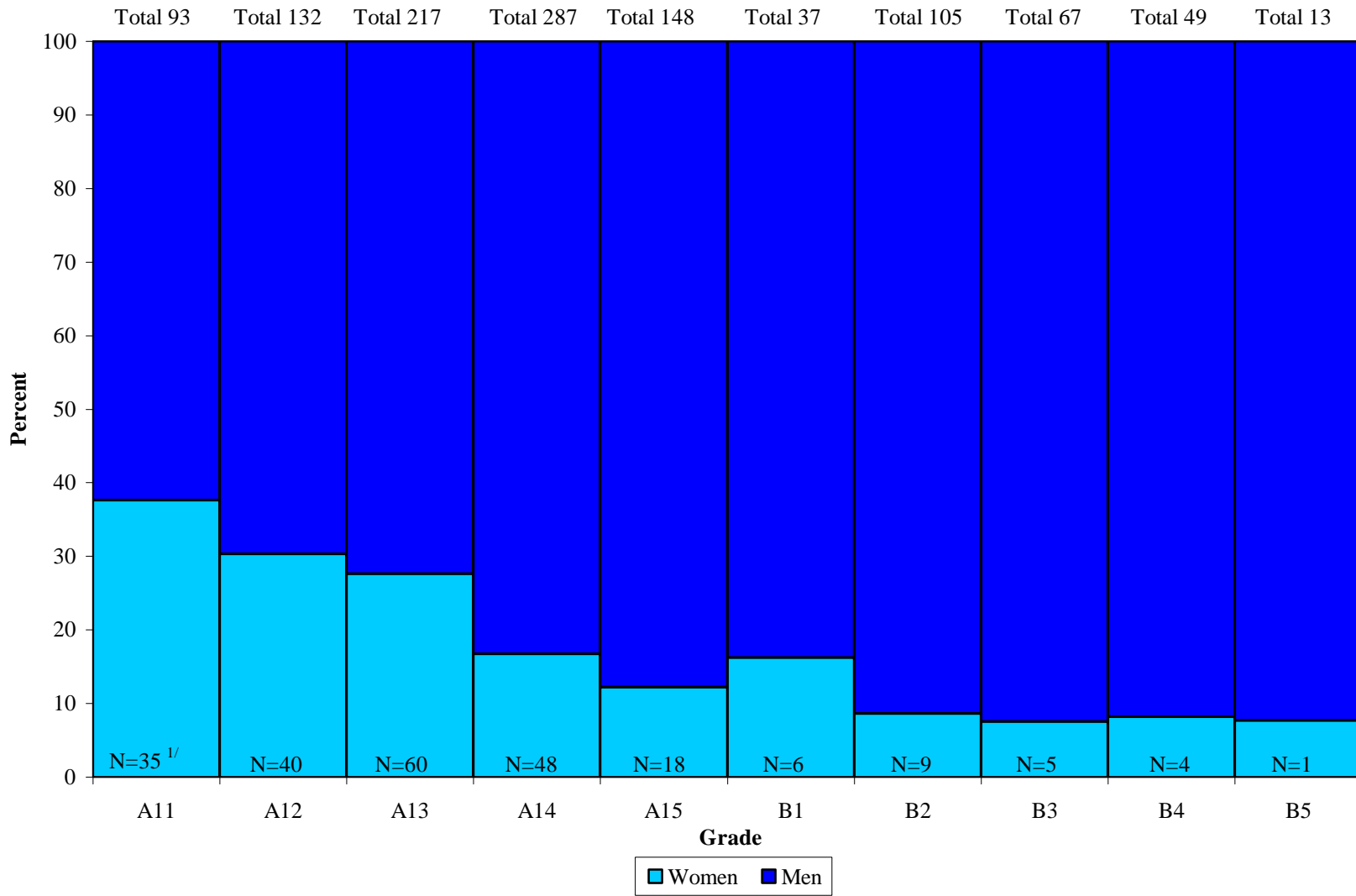
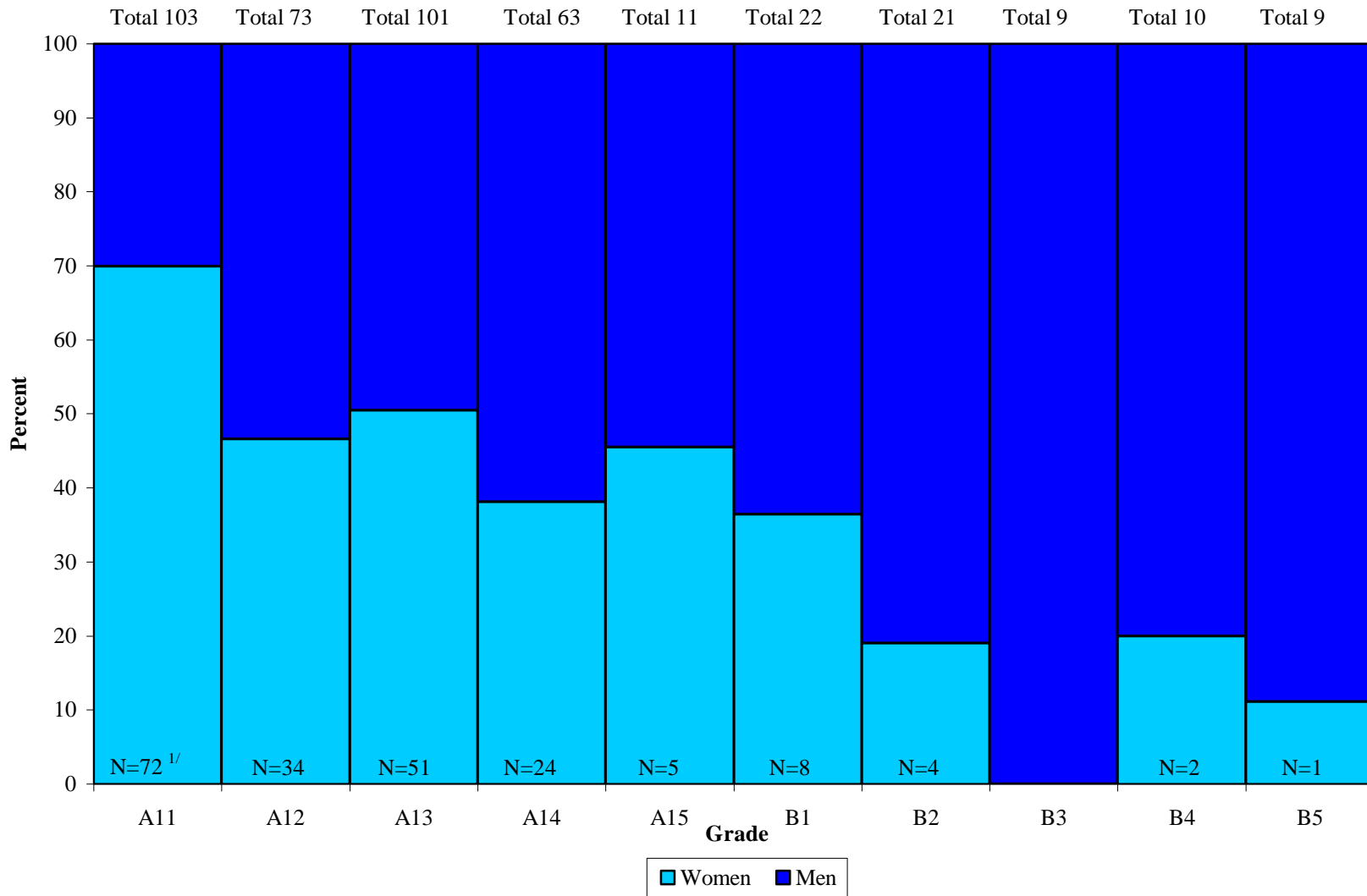


Figure 21. Share of Women and Men by Grade A11-B5: Economists



1/ N= Number of women in the grade.

Figure 22. Share of Women and Men by Grade A11-B5: Specialized Career Streams



1/ N= Number of women in the grade.