



IMFGIVING  
TOGETHER

*Acting together to extend our reach,  
our response, and our results.*

FY 2016 ANNUAL REPORT





# MESSAGE FROM THE MANAGING DIRECTOR



By donating, volunteering, and supporting community initiatives, the IMF’s staff members and retirees are striving to help their neighbors in Washington D.C. and around the world. It is a mark of their commitment that the IMF Giving Together program has raised a record \$2.3 million in donations, benefitting 793 organizations across the globe. From the earthquake in Nepal, to Cyclone Pam in the Pacific islands, to the floods in Myanmar—and well beyond—these resources are going to people in need.

I urge the entire IMF community to continue to support IMF Giving Together, helping our global brothers and sisters, near and far.

Christine Lagarde  
Managing Director

# MESSAGE FROM THE DEPUTY MANAGING DIRECTOR



In 2015, the IMF’s corporate responsibility program took a big leap forward by launching the new IMF Giving Together program and its innovative online Giving Platform. The platform helps staff and retirees donate and volunteer—including as mentors, as providers of food aid, and as fundraisers for humanitarian causes. I was proud to participate in a recent volunteering event in honor of the Dr. Martin Luther King, Jr. Day of Service, which saw IMF staff and their families packaging 50,000 meals for local and international charities.

I would like to extend my personal thanks to all the staff members, families, and retirees who gave their time so generously—and look forward to their continuing contributions in the years ahead.

Carla Grasso  
Deputy Managing Director

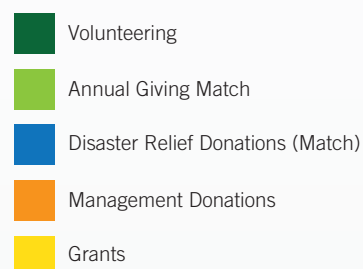
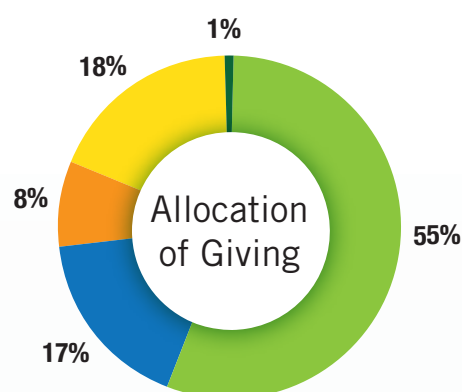
CONTENTS	About IMF Giving Together.....	1	Volunteering .....	8
	Annual Giving .....	2	Grants .....	10
	In-Kind Donations .....	4	Management Donations.....	12
	Humanitarian Appeals and Disaster Relief .....	6		

# About IMF Giving Together

The IMF has provided charitable donations and humanitarian assistance to local and global communities since 1975, first participating in existing local and regional programs and later through IMF-run programs designed to serve the philanthropic interests of staff and retirees.

The IMF Civic Program was launched in 1994 by Managing Director Michel Camdessus to coordinate annual giving and civic grants. INVOLVE (International Volunteer Venture), a grassroots volunteer group, was started by IMF staff in the same year, and, in 1998, a matching program was established to multiply the impact of staff and retiree humanitarian and disaster relief for developing countries.

The giving, grants, volunteer, and relief programs of the IMF Civic Program were relaunched and modernized in 2015 under Managing Director Christine Lagarde as “IMF Giving Together.” The new name is a recognition that acting together can extend our reach, our response, and our results. IMF Giving Together mobilizes corporate and staff/retiree donations, in-kind transfers, time, and knowledge, and deploys these gifts when and where they are needed—improving lives and fostering the well-being of people in all 189 member countries.



**Total Budget \$1,121,022**

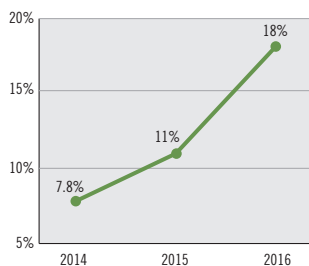


# Annual Giving

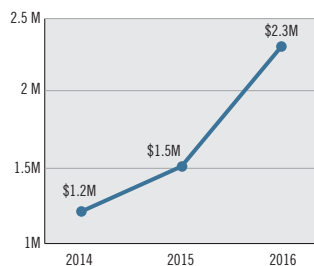
The IMF Giving Together Fall 2015 campaign ran from September 15 through December 18. In launching the campaign, IMF Managing Director Christine Lagarde highlighted the benefits of the new online Giving Platform: “You get to choose who you give to, when you give, how much, and we top it up with 50 percent”—a reference to the fact that the IMF provides a 50 percent match for each donation up to \$5,000 per donor.

The 2015 Fall Giving campaign raised \$2.3 million in donations from staff with matching, a nearly 50 percent increase over the \$1.5 million raised in 2014. Eighteen percent of staff participated, compared with 14 percent in 2015. Donation as well as participation levels have increased steadily over the last few years and in 2015 we set new records for both.

Staff Participation



Annual Giving Trend



Overall Donations for FY2015



The table lists the 10 charities supported by most staff and retirees during 2015. Here are some examples of the work supported. (A full list of recipients appears at the end of this report.)

Top Charities by Number of Staff and Retiree Donors

Cause	No. of Donors	Amount (without matching)
United States Fund For UNICEF	202	\$93,029.21
Doctors Without Borders/Médecins Sans Frontières (MSF)	187	\$160,848.91
Global Impact	156	\$30,394.00
Save the Children Federation, Inc.	101	\$30,207.50
American Red Cross	60	\$21,922.75
American University Radio (WAMU)	54	\$14,840.25
So Others Might Eat, Inc.	53	\$45,020.78
WETA TV and FM	47	\$13,179.00
Amnesty International USA, Inc.	38	\$13,947.00
Capital Area Food Bank	36	\$25,129.50

*Some examples of the work supported.*

## EarthShare

IMF donors provided \$40,131 to EarthShare to support its work in maintaining and restoring the environment and educating young people about environmental issues. IMF staff contributions supported volunteers who removed 2,250 tons of garbage from the Potomac River shoreline, installed rain gardens to reduce runoff, planted native plants and trees in local communities, and removed invasive vegetation. IMF support also underwrote free environmental education for urban youth, a small number of summer jobs in conservation, and advocacy work to protect waterways from pollution and overdevelopment and restore native habitats such as oyster beds in the Chesapeake Bay.

## SODEV

SODEV International works to reduce poverty, improve the quality of life, and promote sustainable development in rural communities in Benin. IMF staff donations totaled \$62,692, which helped provide free functional literacy and numeracy classes and training in agriculture, health care, HIV/AIDS prevention, nutrition, civics, computers, and home economics to 284 people in 10 of the country's poorest villages.

## SOME, Inc.

So Others Might Eat is a nonprofit that provides emergency services for Washington, D.C. residents who live at or below the poverty line. Fund staff and retirees have provided support for several years; in 2015 alone, donations totaled over \$39,000 from 246 Fund staff/retirees, placing SOME second in level of participation and third in donations. Along with hot meals, SOME provides clothing and showers to the homeless, visits to doctors and dentists, emergency housing and stability services for the elderly, support and care for homeless adults with mental illness, comprehensive addiction-recovery services, job training for young adults, and temporary housing for families.

In 2015, **IMF** employees donated **\$244,277.88** to Global Impact and its charity partners. Take a look at the collective impact your donations can have around the world:\*

**GLOBAL  
IMPACT®**

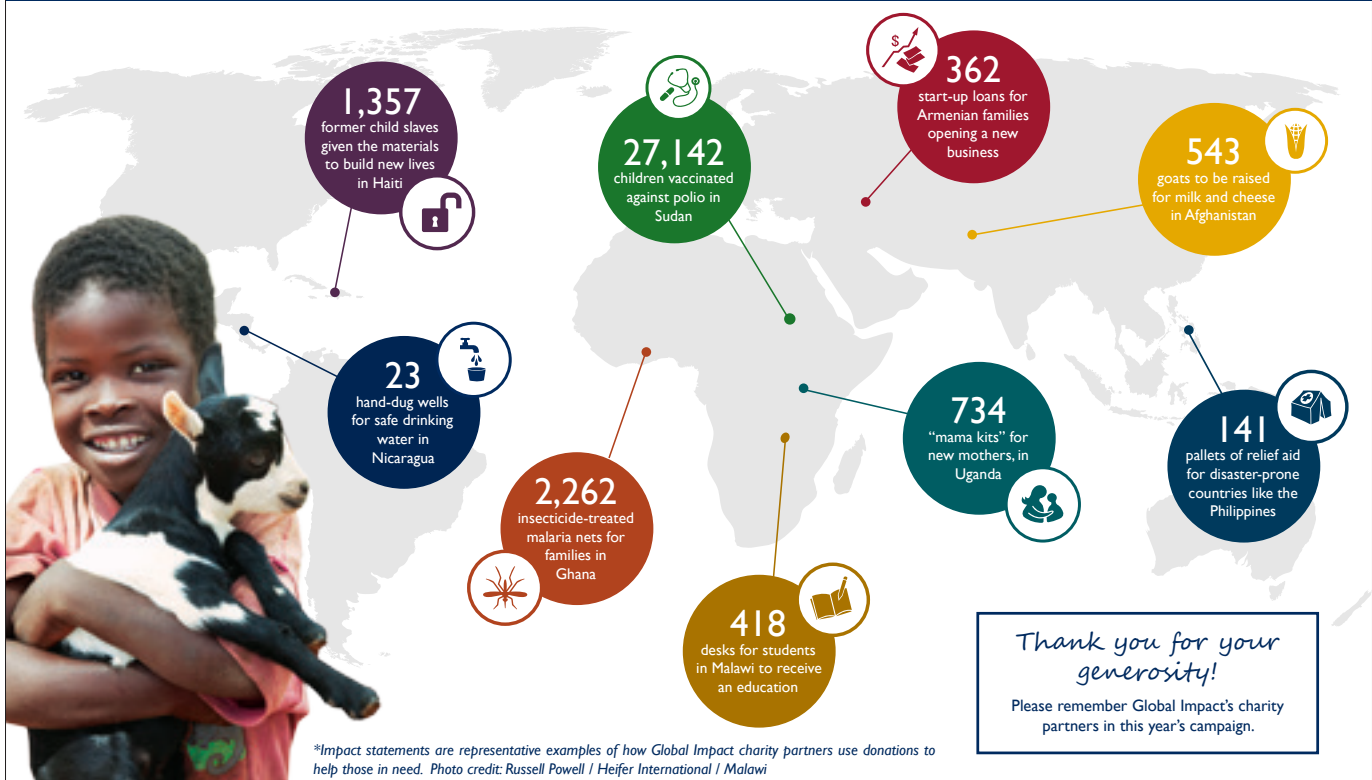
www.charity.org

**\$244,278**  
Total Contributed

**\$18,165**  
Myanmar Relief  
Fund

**\$1,500**  
Chennai Disaster  
Assistance

**\$16,441**  
Southern Africa  
Appeal



**Huyen Le** (retiree, pictured center): While visiting Vietnam years ago, I was so touched seeing the gap in living standards between the rich and the poor that I decided to help make a difference in people's lives and started volunteering for Tu Bi Foundation in the U.S. and Vietnam.



**Carolina Griffiths** (pictured center): During a trip to Africa in 2011, I was thrilled to see that one of the causes supported by the IMF's Giving Together program was the US Friends of the David Sheldrick Wildlife Trust. I started donating through this program due to the matching offer provided by the Fund. I heard about many other organizations I support through this program thanks to reading their profiles on the Giving Together platform. Even a small donation to any charity can go a long way, so I encourage everyone to take the time to check out the site and find a cause you're passionate about. The Fund makes it easy for everyone to contribute through payroll deductions and other methods of payment.



## Annual Giving (continued)

**Marlene George:** I have encouraged my colleagues, friends, and loved ones to support the Giving Together program no matter how small the amount. Through emails and flyers to my colleagues, I have encouraged them to join me in my efforts in giving back to our community, not only at the end of the year but year round. We need only to look around the parks surrounding the IMF and World Bank to see that homelessness is an issue in every season.



**Thanks to the \$308,428.74 contributed by the International Monetary Fund and other supporters, the American Red Cross was able to help:**



**Cyclone Pam Vanuatu**



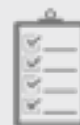
**Nepal Earthquake**



Hygiene Promotion Activities  
for more than  
**98,600**  
Families



Relief Supplies  
for  
**99,457**  
Families



Shelter Construction  
Training for  
**6,900**  
Families



American Red Cross  
in the National Capital Region

## In-Kind Donations

**IMF staff and retirees give generously with in-kind donations through seasonal and year-round drives, including:**

- Through the **Bikes for the World's** annual campaign, in June 2015, staff from the Fund and the World Bank and students from the George Washington University donated more than 70 bicycles to teachers, students, farmers, health care workers, and small business owners in Central America.

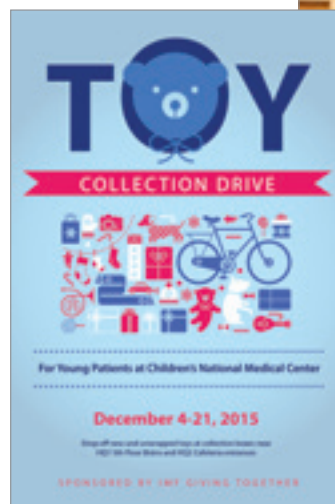


- In July 2015, IMF Giving Together began a **year-round drive to collect toiletry kits for the homeless** in the District of Columbia. Staff donated 331 used mobile phones to be distributed to senior citizens and domestic violence victims through Secure the Call.





- At the time of the Thanksgiving Holidays in the US, the **annual canned food drive** organized by the IMF Volunteers Club collected 218 pounds of food for Manna Food Center in Montgomery County. A similar Thanksgiving Food Drive, organized by staff in the European department and the Fund at large, totaled more than 1,300 pounds of food for the Foggy Bottom Food Pantry at the United Church, which helps the homeless in the immediate vicinity of the Fund.
- The **annual toy drive**, centered around the children's holiday party received more than 370 toys; of which 270 went to young patients at Children's National Medical Center in Washington, D.C.; the remainder went to Community Lodgings of Alexandria, an organization that raises immigrant families from homelessness to independence and self-sufficiency.
- In January, the IMF Volunteers Club coordinated a coat drive that collected more than 500 **cold-weather clothing items** which were distributed via five local charities to homeless people in the DC-metro area.



# Humanitarian Appeals and Disaster Relief

Since 2010, staff and the IMF Giving Program have raised over \$1.2 million to assist the victims of floods, earthquakes, famine and disease, as well as other humanitarian needs. During the period of May 2015 to April 2016, staff mobilized three humanitarian appeals; for Nepal, Vanuatu, Myanmar, and Ecuador raising a total of \$429,621.

## Nepal

On April 25, 2015, a 7.8 magnitude earthquake struck Kathmandu, the capital of Nepal. More than 8,000 people were killed, nearly double that many were injured, and millions were displaced. The country's infrastructure was crippled. There was an international appeal for urgent relief. IMF staff and retirees, along with the 100 percent matching donation from IMF Giving Together, raised **\$307,000**. The donations were channeled through the American Red Cross.

## Vanuatu and Other Pacific Islands

Cyclone Pam struck Vanuatu on March 15, 2015, also affecting the neighboring Pacific islands of Kiribati, Tuvalu, and Solomon Islands. It was one of the strongest cyclones ever recorded, and the winds and the storm surge displaced thousands of people and damaged as many as 90 percent of the buildings in Vanuatu. Fund donations via the American Red Cross, matched at 100 percent, totaled **\$29,600**.

## Myanmar

In June 2015, heavy rains, compounded by strong winds from Cyclone Komen, caused severe floods and landslides throughout Myanmar. Widespread flooding affected 34.6 million people, of which 1.6 million were displaced, over 1 million acres of houses and farmlands destroyed, together with the livelihoods of hundreds of thousands of people. Fund donations plus 100 percent matching totaled **\$18,165** and were channeled through Global Impact.

## Ecuador

A massive 7.8 magnitude earthquake struck northern Ecuador on April 16, 2016. There were hundreds of deaths and thousands of injuries, and more than 20,500 people sought shelter in emergency centers. According to the Ecuadorian Red Cross, up to 70,000 people were affected. Fund staff donated more than **\$75,000** to help the victims via UNICEF, the American Red Cross, World Vision, Global Impact, CARE, and Catholic Relief Services.



**Nepal Earthquake**

**HUMANITARIAN RELIEF APPEAL**

May 11 through 22, 2015

Your tax deductible contributions will be channeled through the American Red Cross International Response Fund

Please make your donations online at: <http://www.redcross.org/cn/imf-emp>

Or

Write a check payable to "American Red Cross" with "IMF Nepal Appeal" in the memo line and your IMF staff ID or badge ID on the check.

Drop your check at the collection tables in HQ1 5th floor bistro (3:00 to 4:00pm) or HQ2 cafeteria (12:00 to 2:00pm) or mail it to the Civic Program, HQ1-12-618

SPONSORED BY THE IMF CIVIC PROGRAM



### Eric Mottu:

My favorite charity is "USA for UNHCR." UNHCR is the UN refugee agency which, around the world, helps protect and rebuild the lives of millions forced to flee their homes due to violence and conflict. In 2015 for example, it provided protection and lifesaving assistance to Syrian and other refugees on their journey to Europe.







## HUMANITARIAN RELIEF CAMPAIGNS, 2015





# Volunteering

Fund staff and retirees participate in projects for disadvantaged neighbors in Washington, D.C. as well as programs abroad including programs for the homeless, rebuilding homes for the elderly, and mentoring inner city students. The new Giving Together online platform helps staff find organized volunteer opportunities and connects them with local charities. The platform also allows staff to track their volunteer hours.

**The IMF Volunteers Club** is a staff network formed in January 2015 to create more opportunities for staff and retirees to connect with the local community. All IMF staff and retirees are welcome to join the IMF Volunteers Club. [givingtogether@imf.org](mailto:givingtogether@imf.org)



The flagship volunteering event at the IMF is the annual Dr. Martin Luther King, Jr. Day of Service food-packaging event. In 2016, the Giving Together program and the IMF Volunteers Club organized this event where 400 IMF volunteers packaged 50,000 meals intended for an orphanage in Haiti and the Capital Area Food Bank in Washington, DC. According to Outreach, Inc., which coordinated the event, "Food not only meets immediate needs but it also opens doors to lasting change. The donations of rice and beans from the IMF were a great help to our programs in Haiti. The meals donated by the IMF were distributed through our Children's Feeding Initiatives, which serve over 220 schools throughout Haiti."







**Cameron Heard:**

It's a lot of responsibility, but also fun and, most important, rewarding. It's great to know that we make a difference in our local community and make a mark as the unique international community that we are.



## Teaching Financial Literacy

The IMF Giving Together and the Volunteers club facilitated for Fund staff to contribute not only their time but also their expertise and strategic vision. In April 2016, in partnership with the Washington DC nonprofit Serve Your City, they presented a course on financial literacy to students from DC's School Without Walls and Eastern High School. More than two dozen volunteers from the IMF community led eight weekly sessions covering a variety of personal finance topics.

IMF Deputy Managing Director Carla Grasso, in her speech to the graduates of the course, encouraged them to dream big when thinking of their futures: *"What I've seen here is really wonderful. This is the IMF—we deal with the authorities, with bankers, with entrepreneurs. You are those guys of tomorrow—take the opportunity to learn. You will be the next ministers, governors, researchers, entrepreneurs, and maybe you will be able to deliver to your children a better world. Everything is possible—believe it is possible. You are young and this is your time."*

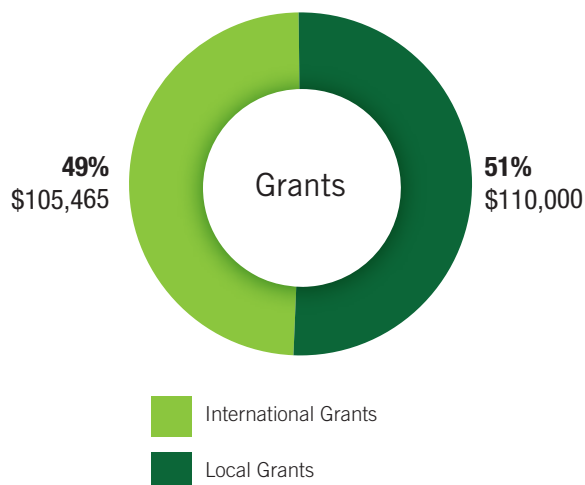
Other volunteer projects undertaken by IMF staff include environmental clean-up and restoration work, serving meals to the homeless, and resume workshops for DC high school seniors.



# Grants

**IMF Giving Together provides monetary grants to charities that foster economic independence through the promotion of education and economic opportunity.**

The grants are focused on organizations located in the IMF's headquarters in Washington, D.C. and in low-income member countries. The grants are overseen by the Civic Program Advisory Committee (CPAC), which includes representatives from retirees, the Staff Association (SAC), and the IMF Family Association. CPAC vets the grants applications and makes a selection of local and international non-profits eligible for Fund grant awards. The grant program was first started in 1995. In 2015, grants totaled \$215,000.



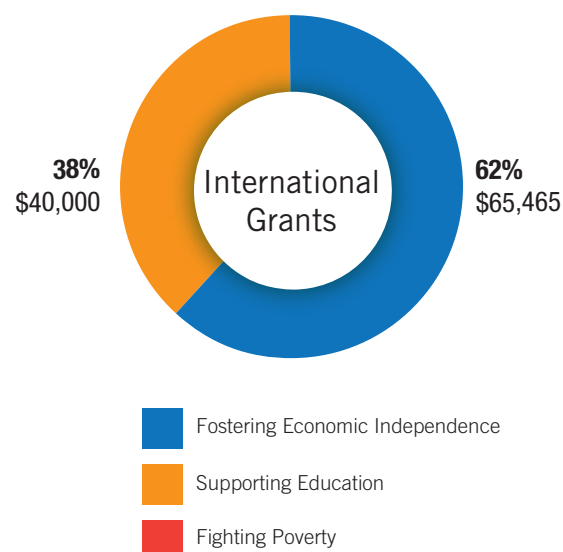
## Calvary Women's Services, Washington, D.C.

([www.calvaryservices.org](http://www.calvaryservices.org))

Calvary Women's Services provides housing, health care, employment, and education programs for 130 homeless women in Washington, D.C. With support, these women strengthen their health, learn new skills, and find stable employment. Of the women who complete the program, 70 percent moved into their own home. Calvary Women's Services new job placement program, Step Up DC, helped 27 women secure a job during 2015, and more than 90 percent held their jobs for three months or more. In addition to financial support (\$10,000 in 2015), IMF staff and retirees volunteer their time to support Calvary Women's Services programs, including by providing nearly 400 meals during 2015.



## Areas of Focus





FY16—Metro DC Grants		
Organization		Final Approved Funding
Alive!		\$5,000
Byte Back		\$5,000
Calvary Women's Services		\$5,000
Charlie's Place		\$5,000
DC Creative Writing Workshop		\$10,000
DC Scores		\$5,000
Free Minds		\$10,000
Joseph's House		\$5,000
Jubilee Jobs		\$10,000
LAYC Career Academy		\$5,000
Latino Student Fund		\$5,000
Literacy Council of NOVA		\$5,000
Miriam's Kitchen		\$10,000
St. Paul's Parish - Commission on Mission (Grate Patrol)		\$5,000
Samaritan Ministry		\$10,000
Shepherd's Table		\$5,000
Thrive DC		\$5,000
<b>Total</b>		<b>\$110,000</b>



### Miriam's Kitchen, Washington, D.C. ([www.miriamskitchen.org](http://www.miriamskitchen.org))

Miriam's Kitchen works to end chronic homelessness through services, advocacy, and housing. It serves the homeless with a breakfast program, case management services, traditional housing, and daily programs and activities. The IMF has supported its work since 1995. A FY16 grant of \$10,000 helped the organization move more people into permanent housing. Taking a holistic approach to the problems associated with homelessness, Miriam's Kitchen starts with the basics: well-prepared meals and a welcoming, safe space, addressing immediate pressing needs, but also helping clients access the health care, assessments, mental health care, employment assistance, government services, and case management services that help them to find jobs and housing and stay housed.

CPAC FY16—International Grants		
Area	Organization	Final Approved Funding
Nepal (APD)	Academics Without Borders	\$10,000
Vietnam (APD)	Children of Vietnam	\$10,000
Costa Rica (WHD)	Fundacion Accion Joven	\$10,000
West Bank and Gaza (MCD)	Middle East Children's Institute (MECI)	\$10,000
Guatemala (WHD)	Namaste Direct	\$10,000
Ethiopia (AFR)	Retrak America	\$10,000
Zimbabwe (AFR)	RIFA Conservation Education Camp c/o Zimbabwe Hunter's Association	\$6,600
Honduras (WHD)	School the World	\$10,000
Uganda, Kenya, and Tanzania (AFR)	Women's Microfinance Initiative (WMI)	\$10,000
Haiti (WHD)	World Central Kitchen	\$8,865
Kenya (AFR)	Zawadisha Fund, The	\$10,000
<b>Total</b>		<b>\$105,465</b>

### Women's Microfinance Initiative—Uganda ([www.wmi.org](http://www.wmi.org))

Financial inclusion for rural women can improve living standards and help families out of poverty. The Women's Microfinance Initiative (WMI) in East Africa makes loans and trains women in the skills needed to start their own businesses. The WMI has had dramatic effects on savings rates for individual participants, and has introduced programs and products that make financial services more accessible to entire communities. Best of all the WMI is run by the women themselves. They issue and collect loans, visit borrower businesses and monitor the progress of projects related to the WMI, conduct the training in business skills, track program performance, meet with banking representatives to devise and launch new products. In FY16, the IMF supported the WMI with a grant of \$10,000.



# Management Donations

Every year, members of the IMF Management team donate to charities in countries that they visit on official business.

These donations are an important part of IMF's Corporate Social Responsibility. The average donated amount donated is \$7,500. In FY16, IMF Management distributed over \$90,000 in donations to charities in the following countries:

- |                          |  |                         |
|--------------------------|--|-------------------------|
| ■ Chad – DMD Furusawa    | ■ Mozambique – DMD Grasso                  | ■ Peru – MD Lagarde     |
| ■ Ghana – DMD Zhu        | ■ Nigeria – MD Lagarde                     | ■ Tanzania – DMD Grasso |
| ■ Liberia – MD Lagarde   | ■ Peru – Management during Annual Meetings | ■ Vietnam – MD Lagarde  |
| ■ Mauritius – DMD Grasso |  |                         |

*Cameroon - MD Lagarde*



*Tanzania - DMD Grasso*



*Democratic Republic of Congo –  
FDMD Lipton*





*Peru –donation by MD Lagarde to a Youth Orchestra “Sinfonía per el Peru”*



*Peru –  
DMD Zhu*

*Nigeria – MD Lagarde*



*Vietnam - MD Lagarde*



*Chad – DMD Furusawa*





**Together, we can  
help protect wildlife and  
the environment**



International Monetary Fund  
700 19th Street, NW  
Washington, DC 20431

[www.imf.org/giving](http://www.imf.org/giving)  
[givinttogether@imf.org](mailto:givinttogether@imf.org)

BAR CODE?