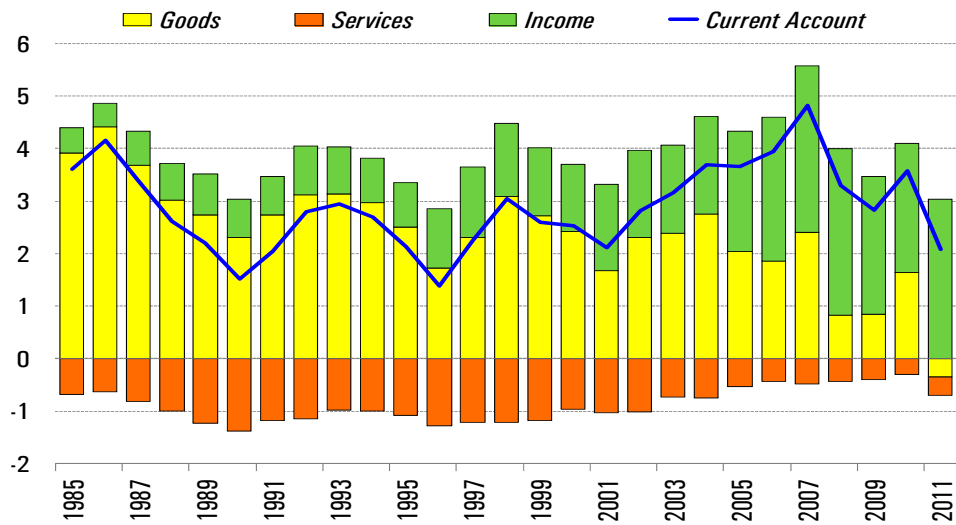


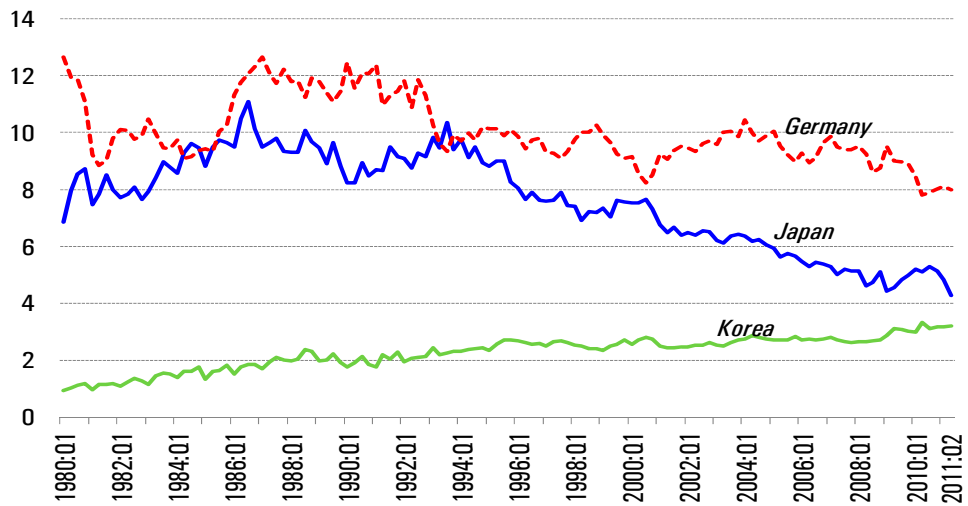
Japan: Current Account Balance
(In percent of GDP)



Sources: Haver Analytics; and IMF staff calculations.

Exports

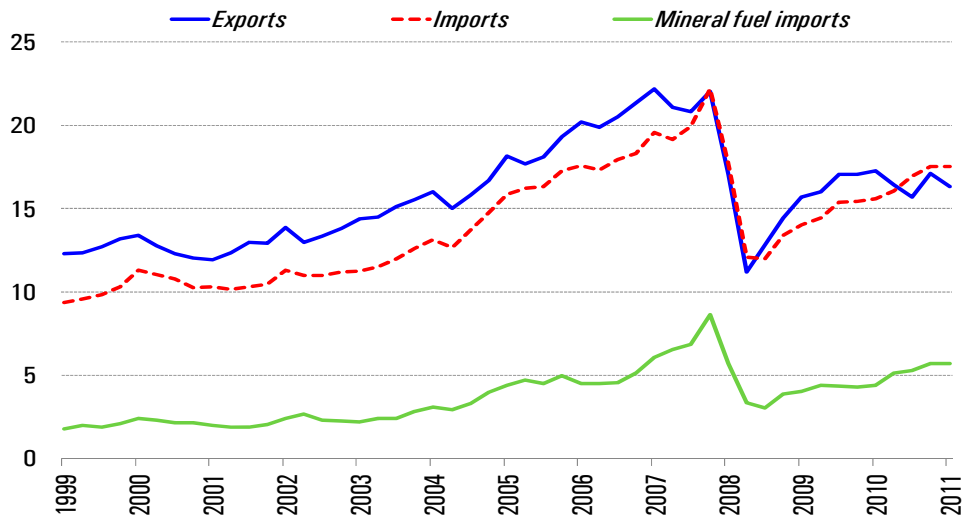
(Share in world exports, in percent)



Sources: IMF, *Direction of Trade Statistics* and staff calculations.

Japan: Goods Trade and Fuel Imports

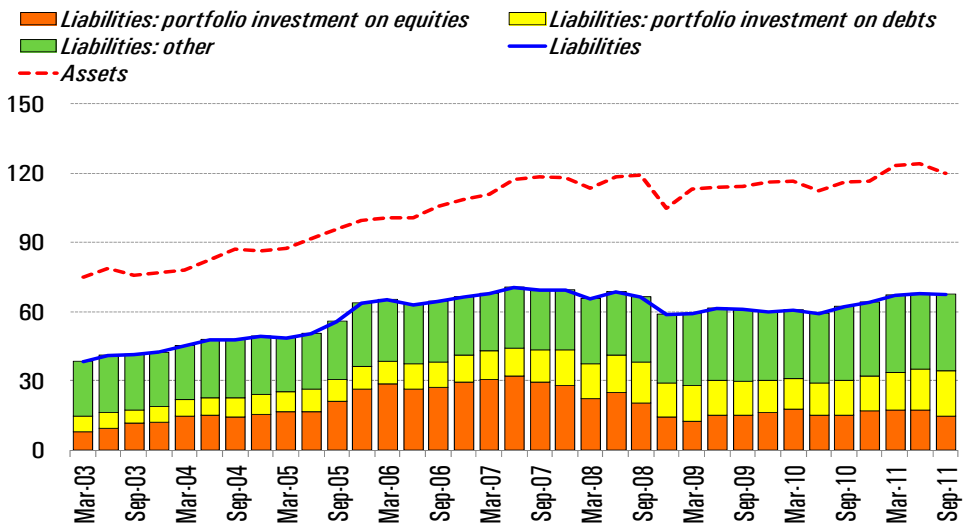
(In trillions of yen)



Sources: CEIC Data Company Ltd.; Haver Analytics; and IMF staff calculations.

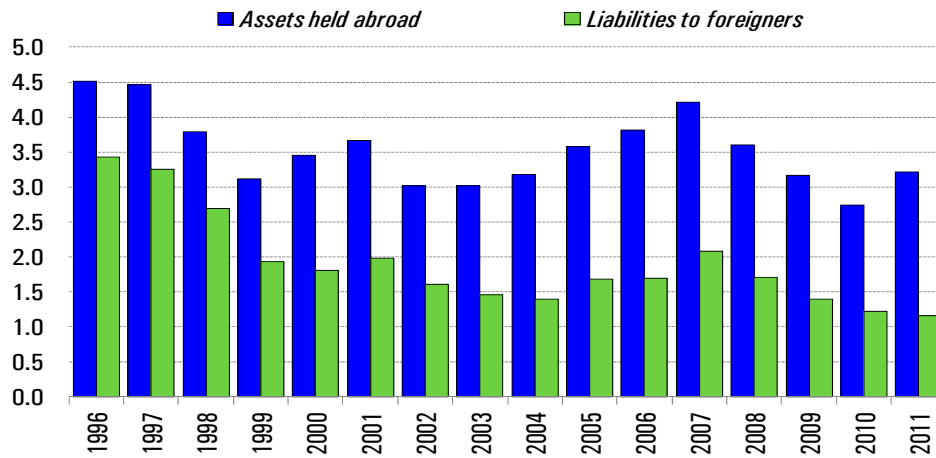
Japan: International Investment Positions

(In percent of GDP)



Sources: Bank of Japan; Haver Analytics; and IMF staff calculations.

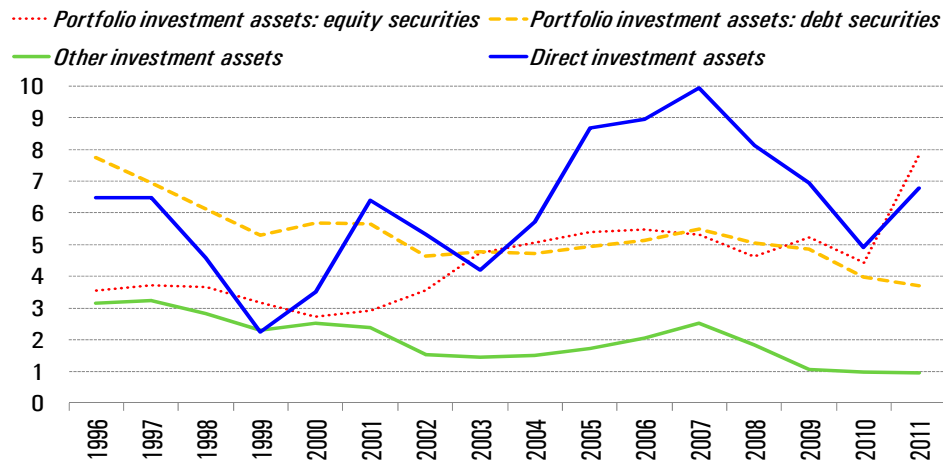
Japan: International Investment Positions (In percent of GDP)



Sources: Bank of Japan; Deutsche Bank; and IMF staff calculations.

¹ Rate of return estimated by each category of investment income divided by corresponding stock levels obtained from international investment positions.

Japan: Estimated Rate of Return on External Assets¹ (In percent)



Sources: Bank of Japan; Deutsche Bank; and IMF staff calculations.

¹ Rate of return estimated by each category of investment income divided by corresponding stock levels obtained from international investment positions.