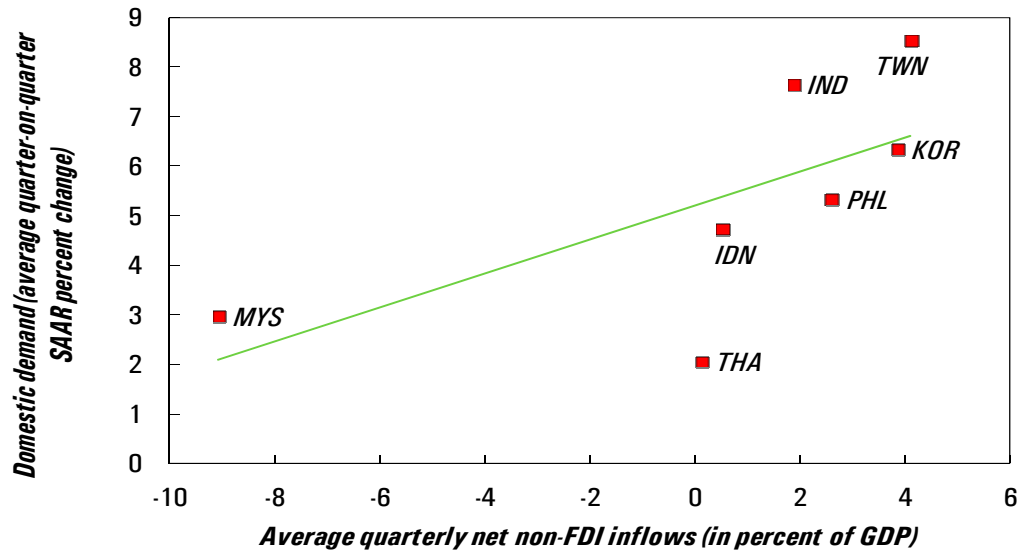


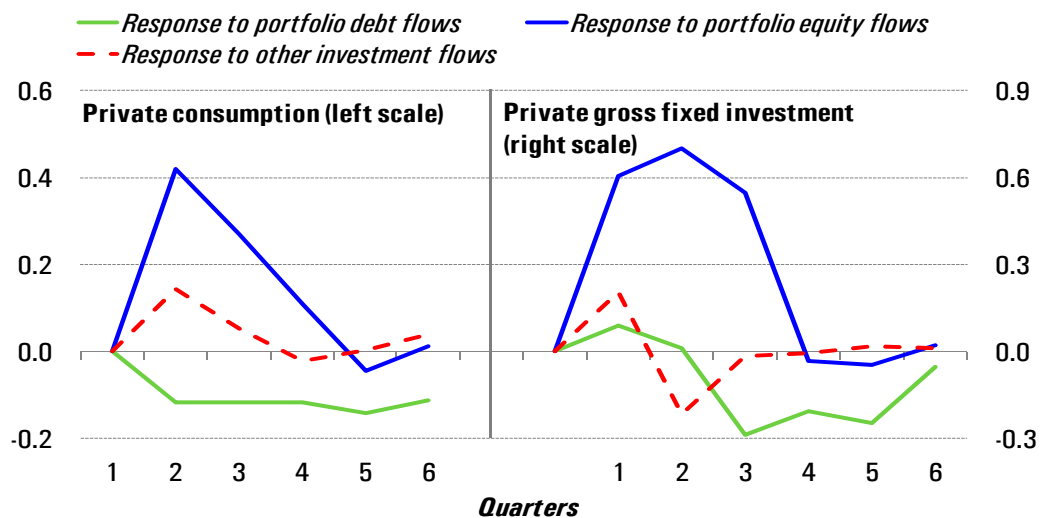
Emerging Asia: Domestic Demand and Net Non-FDI Capital Inflows during 2009:Q1–2010:Q1



Sources: CEIC Data Company Ltd.; and IMF, *Balance of Payments Statistics*; and staff calculations.

Emerging Asia: Response of Private Domestic Demand to Non-FDI Capital Net Inflows¹

(In percentage points)

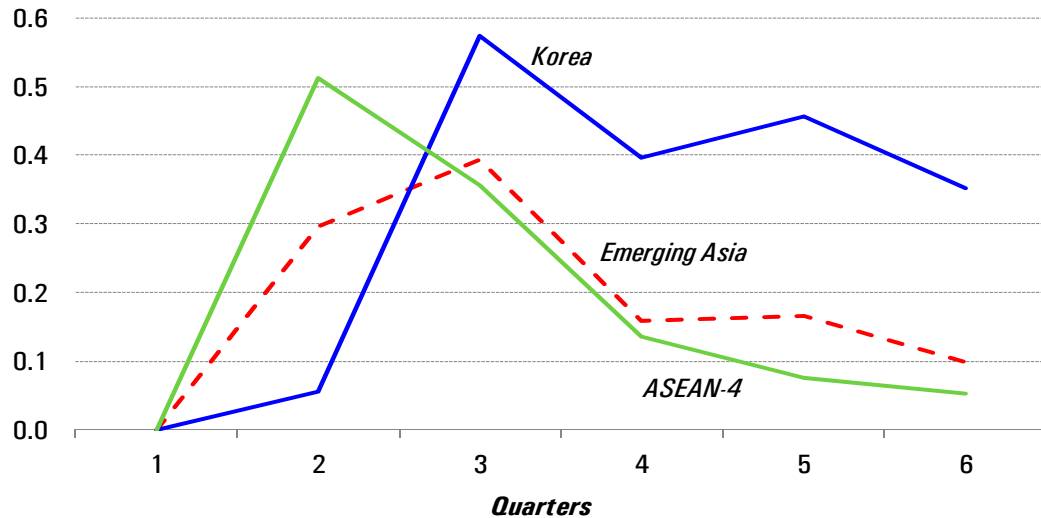


Source: IMF staff estimates.

¹ Includes ASEAN-4, India, Korea, and Taiwan Province of China. Response of quarter-on-quarter annualized growth to 1 percentage point of GDP increase in net inflows of each type.

Emerging Asia: Response of Credit to Private Sector to Other Investment Net Inflows¹

(In percentage points)

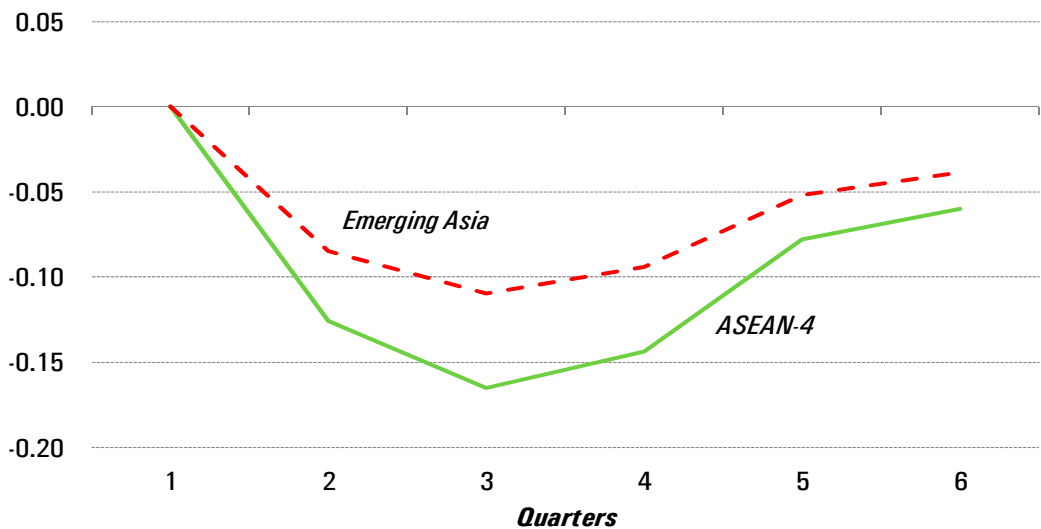


Source: IMF staff estimates.

¹ Includes ASEAN-4, India, Korea, and Taiwan Province of China. Response of quarter-on-quarter annualized growth to 1 percentage point of GDP increase in other investment net inflows.

Emerging Asia: Response of Real Cost of Equity to Portfolio Equity Net Inflows¹

(In percentage points)

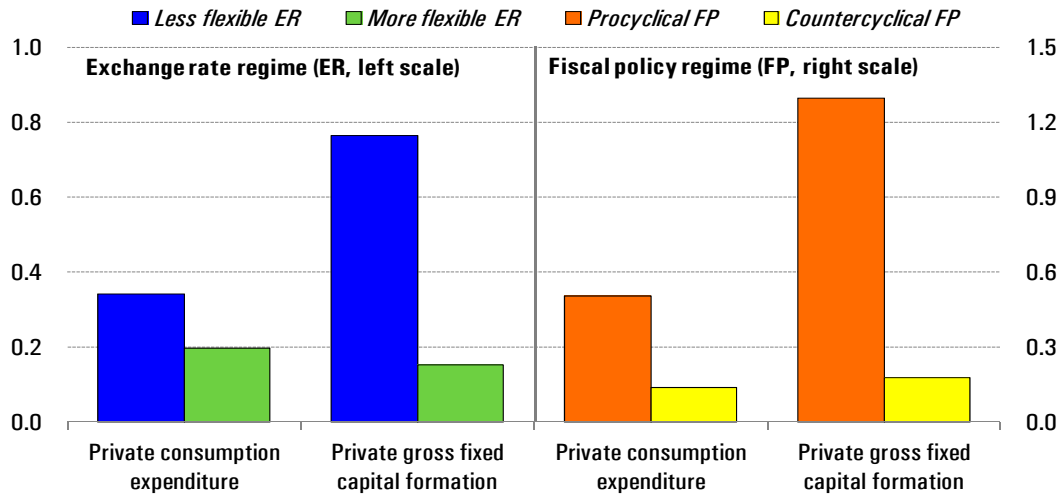


Source: IMF staff estimates.

¹ Includes ASEAN-4, India, Korea, and Taiwan Province of China. Response of real cost of equity to 1 percentage point of GDP increase in portfolio equity net inflows.

Emerging Asia: Response of Private Domestic Demand to Non-FDI Net Capital Inflows by Policy Regimes¹

(In percentage points, 4-quarter cumulative response)



Source: IMF staff estimates.

¹ Average response of quarter-on-quarter seasonally adjusted growth rate to an increase in each of portfolio debt, portfolio equity, and other investment flows by 1 percentage point of GDP. Emerging Asia includes ASEAN-4, India, Korea, and Taiwan Province of China.