



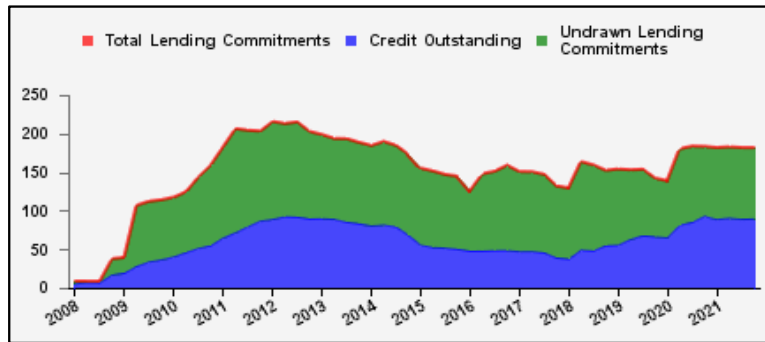
Weekly Report on Key Financial Statistics

Table 1. Key Indicators 1/

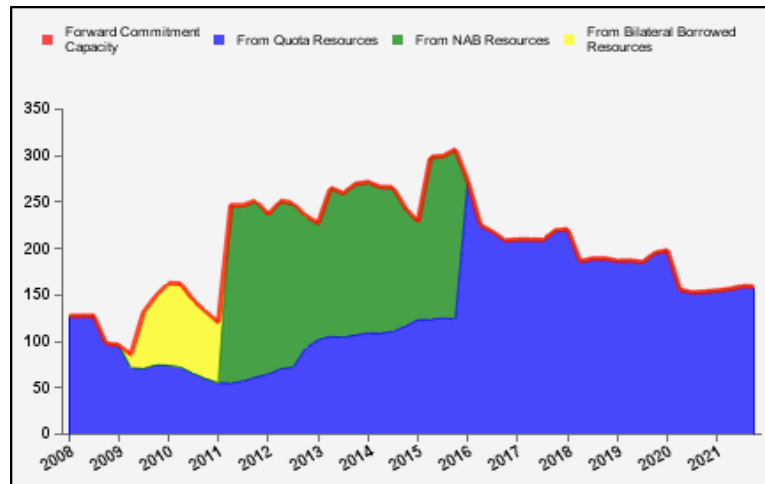
as of October 29, 2021

(In billions of SDRs, unless indicated otherwise)

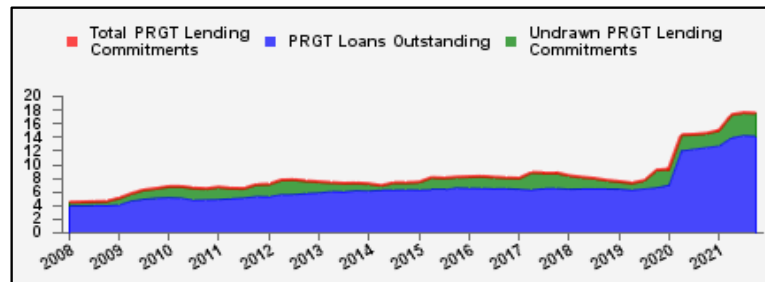
GRA Lending and Resources	SDR	USD
I. Total Lending Commitments, of which:	181.8	257.3
Undrawn Lending Commitments	91.6	129.7
Credit Outstanding	90.2	127.6
II. Forward Commitment Capacity (FCC)	159.1	225.2
III. Unactivated Borrowed Resources, of which: 2/	389.3	551.0
NAB	280.9	397.6
Bilateral Borrowing Agreements	108.4	153.4
IV. Total GRA Resources (I. + II. + III.)	730.2	1,033.5



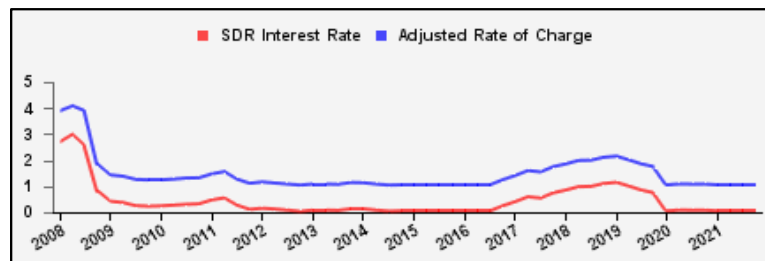
Forward Commitment Capacity (FCC)	SDR	USD
I. Usable resources (a) + (b)	315.7	446.8
(a) Fund quota resources	315.7	446.8
(b) Fund borrowed resources	--	--
II. Undrawn balances under GRA lending commitments	91.6	129.7
Precautionary 3/	80.4	113.8
Non-precautionary	11.2	15.9
III. Uncommitted usable resources (I - II)	224.0	317.1
IV. Repurchases one-year forward	15.4	21.8
V. Repayments of borrowed resources one-year forward	1.4	2.0
VI. Prudential balance	79.0	111.8
VII. Forward commitment capacity (III + IV - V - VI) 4/	159.1	225.2
(a) From Quota resources	159.1	225.2
(b) From NAB resources	--	--
(c) From Bilateral Borrowed resources	--	--



PRGT Lending and Resources	SDR	USD
I. Total Lending Commitments, of which:	17.4	24.7
Ia. Undrawn lending commitments	3.3	4.6
Ib. Loans Outstanding	14.2	20.0
II. Undrawn Loan Resources	20.0	28.3
III. Uncommitted Loan Resources (II. - Ia.)	16.7	23.6



Rates	Percent
1 SDR = USD	1.41538
SDR Interest Rate	0.050
Adjusted Rate of Charge	1.050
Adjusted Rate of Remuneration	0.050



1/ -- Indicates zero value, zero indicates amounts less than SDR 0.05 billion. Totals may not add due to rounding.

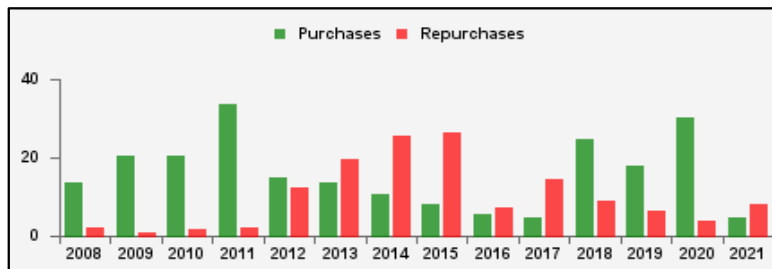
2/ Excludes 20% prudential balance and borrowing lines of participants/members that are currently not in the FTP; for the NAB, also excludes borrowing lines of participants that have not yet adhered to the NAB as well as any outstanding NAB claims and undrawn committed resources under current NAB-eligible arrangements.

3/ Undrawn balances under arrangements treated as precautionary by the authorities.

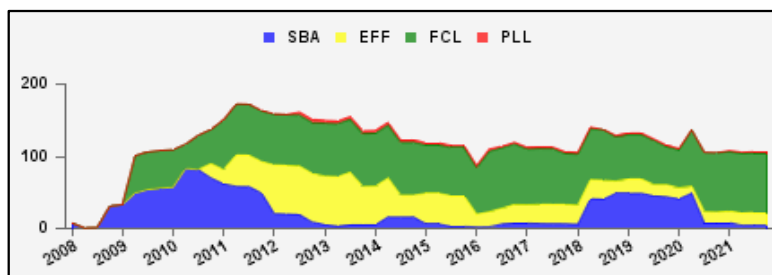
4/ In the event of activation of the NAB and/or bilateral borrowed resources, the FCC is modified to take account of additional usable resources under these arrangements (which exclude a prudential balance and non-FTP members).

Table 2a. Use of GRA Resources 1/
as of October 29, 2021
(In billions of SDRs, unless indicated otherwise)

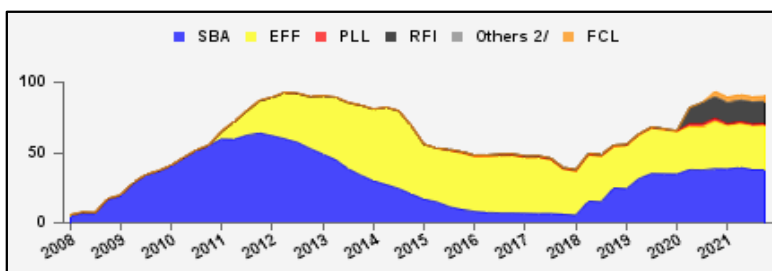
GRA Lending (Calendar year to date)	SDR	USD
Purchases	4.7	6.7
Financed by Quota Resources	4.7	6.7
Financed by Borrowings	--	--
Repurchases	8.0	11.3
Commitments Approved	6.4	9.0



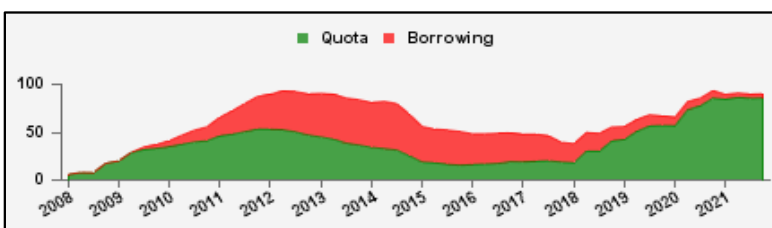
Commitments Under Current GRA Arrangements	Number of	SDR	USD
Standby Arrangement (SBA)	4	4.6	6.5
Extended Fund Facility (EFF)	12	17.7	25.1
Flexible Credit Line (FCL)	4	82.3	116.5
Precautionary and Liquidity Line (PLL)	1	1.9	2.7
Short-Term Liquidity Line (SLL)	--	--	--
Total Current Arrangements	21	106.4	150.7



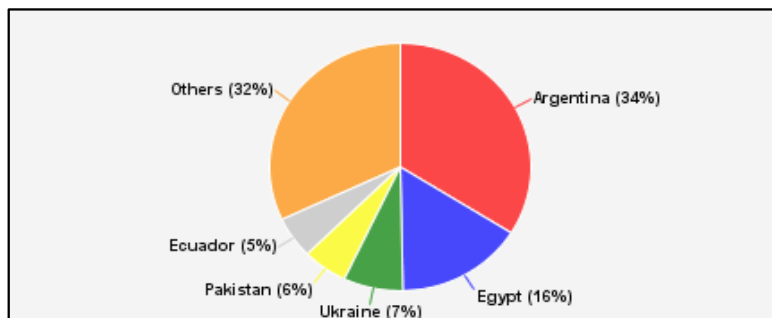
Credit Outstanding by Facility	SDR	USD
Standby Arrangement (SBA)	37.8	53.5
Extended Fund Facility (EFF)	31.4	44.4
Flexible Credit Line (FCL)	3.8	5.3
Precautionary and Liquidity Line (PLL)	1.5	2.1
Short-Term Liquidity Line (SLL)	--	--
Rapid Financing Instrument (RFI)	15.8	22.3
Others 2/	--	--
Total Credit Outstanding	90.2	127.6



Credit Outstanding by Financing Sources	SDR	USD
Financed by Quota Resources	85.7	121.4
Financed by Borrowings	4.4	6.3
Total Credit Outstanding	90.2	127.6



Largest 5 Exposures 3/	Credit Outstanding	
	SDR	As a % of quota
Argentina	30.6	960
Egypt	14.2	699
Ukraine	6.6	329
Pakistan	5.0	247
Ecuador	4.9	701



1/ -- Indicates zero value, zero indicates amounts less than SDR 0.05 billion. Totals may not add due to rounding.

2/ Includes outstanding credit under the former Compensatory Financing Facility; for the chart also includes outstanding credit under the former Emergency Post Conflict and Natural Disaster Assistance policy.

3/ Members with current arrangements are bolded.

Table 2b. Current Financial Arrangements (GRA)

as of October 29, 2021
(In millions of SDRs, unless indicated otherwise) 1/

Member	Amount Committed	Amount Undrawn	Amount Drawn	Credit Outstanding		Period of Arrangement	
				Amount 2/	As a % of Quota	Effective Date	Expiration Date
Standby Arrangement (4)	4,569	2,469	2,099	7,523			
Armenia	309	77	232	313	243	17-May-19	16-May-22
Honduras	358	77	281	281	113	15-Jul-19	14-Jan-22
Senegal	302	216	86	302	93	07-Jun-21	06-Dec-22
Ukraine	3,600	2,100	1,500	6,626	329	09-Jun-20	08-Dec-21
Extended Fund Facility (12)	17,716	8,745	8,971	15,928			
Angola	3,213	535	2,678	2,678	362	07-Dec-18	06-Dec-21
Barbados	322	34	288	288	305	01-Oct-18	30-Sep-22
Cameroon	322	239	83	83	30	29-Jul-21	28-Jul-24
Costa Rica	1,237	1,031	206	576	156	01-Mar-21	29-Feb-24
Ecuador	4,615	1,207	3,408	4,889	701	30-Sep-20	29-Dec-22
Equatorial Guinea	205	176	29	77	49	18-Dec-19	17-Dec-22
Ethiopia	752	662	90	391	130	20-Dec-19	19-Dec-22
Gabon	389	308	81	672	311	28-Jul-21	27-Jul-24
Jordan	1,070	721	350	856	249	25-Mar-20	24-Mar-24
Kenya	1,248	909	339	339	63	02-Apr-21	01-Jun-24
Pakistan	4,268	2,874	1,394	5,020	247	03-Jul-19	02-Oct-22
Seychelles	74	50	24	59	258	29-Jul-21	28-Mar-24
Flexible Credit Line (4)	82,281	78,531	3,750	3,750			
Chile 3/	17,443	17,443	--	--	--	29-May-20	28-May-22
Colombia 3/	12,267	8,517	3,750	3,750	183	01-May-20	30-Apr-22
Mexico 3/	44,564	44,564	--	--	--	22-Nov-19	21-Nov-21
Peru 3/	8,007	8,007	--	--	--	28-May-20	27-May-22
Precautionary and Liquidity Line (1)	1,884	1,884	--	377			
Panama 3/	1,884	1,884	--	377	100	19-Jan-21	18-Jan-23
Total Current GRA Arrangements (21)	106,450	91,629	14,821	27,578			
Memorandum Items:							
Credit outstanding from members without current arrangement and outright disbursements.				62,607			
Total Credit Outstanding.				90,186			

1/ -- Indicates zero value, zero indicates amounts less than SDR 0.5 million. Totals may not add due to rounding.

2/ Includes Credit Outstanding under expired arrangements and outright disbursements.

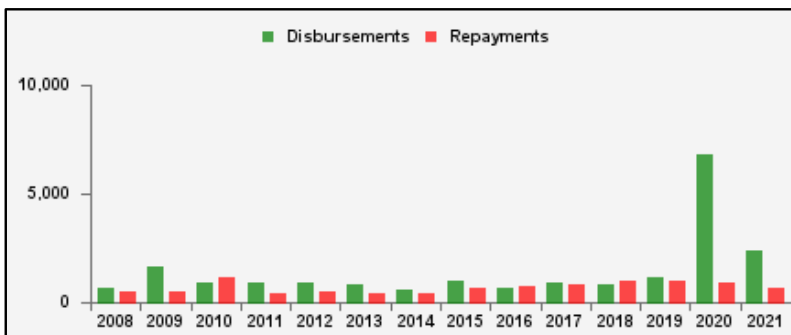
3/ The undrawn commitment of the arrangement is treated as precautionary by the authorities.

Table 3a. Use of Concessional PRGT Resources 1/

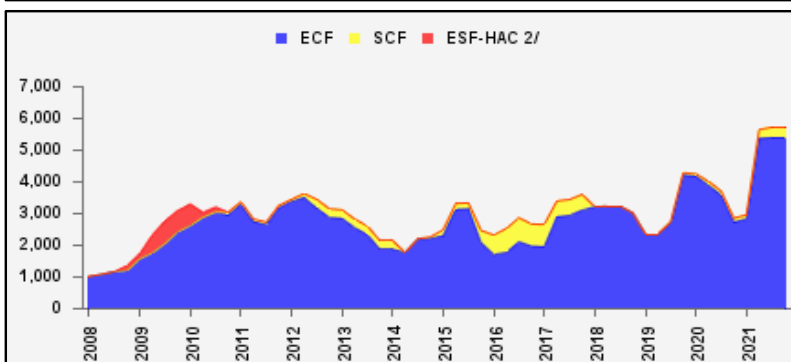
as of October 29, 2021

(In millions of SDRs, unless indicated otherwise)

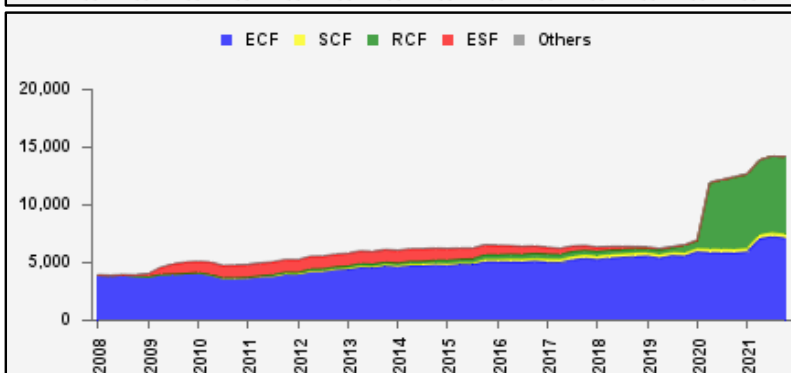
PRGT Lending (Calendar year to date)	SDR	USD
Disbursements	2,358.8	3,338.7
Repayments	683.5	967.3
Commitments Approved	4,990.2	7,063.1



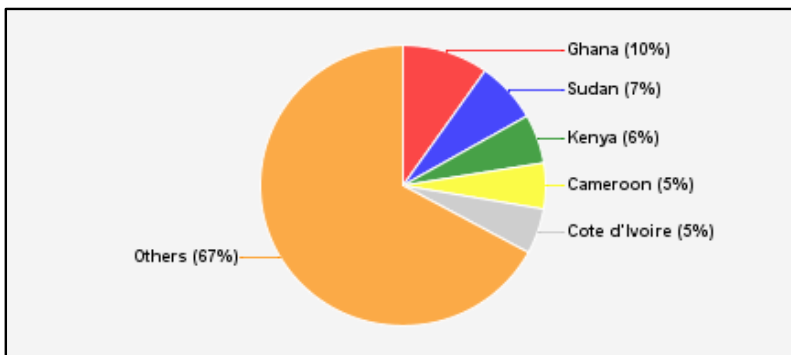
Commitments Under Current PRGT Arrangements	Number of	SDR	USD
Extended Credit Facility (ECF)	14	5,393.7	7,634.2
Standby Credit Facility (SCF)	2	330.0	467.1
Total Current Arrangements	16	5,723.8	8,101.3



Loans Outstanding by Facility	SDR	USD
Extended Credit Facility (ECF)	7,121.8	10,080.0
Standby Credit Facility (SCF)	326.3	461.9
Rapid Credit Facility (RCF)	6,709.1	9,496.0
(former) Exogenous Shocks Facility (ESF)	--	--
Others 3/	--	--
Total Loans Outstanding	14,157.2	20,037.8



Largest 5 Exposures 4/	Loans Outstanding	
	SDR	As a % of quota
Ghana	1,382.2	187
Sudan	991.6	157
Kenya	801.2	148
Cameroon	745.2	270
Cote d'Ivoire	740.4	114



1/ -- Indicates zero value, zero indicates amounts less than SDR 0.05 million. Totals may not add due to rounding.

2/ The last commitment under the old ESF-HAC Facility expired on December 3, 2011.

3/ Includes outstanding and overdue loans under the (former) Structural Adjustment Facility and Trust Fund.

4/ Members with current arrangements are bolded.

Table 3b. Current Financial Arrangements (PRGT)

as of October 29, 2021

(In millions of SDRs, unless indicated otherwise) 1/

Member	Amount Committed	Amount Undrawn	Amount Drawn	Loans Outstanding		Period of Arrangement	
				Amount 2/	As a % of Quota	Effective Date	Expiration Date
Extended Credit Facility (14)	5,394	3,125	2,269	6,250			
Afghanistan	259	74	185	382	118	06-Nov-20	05-May-24
Cameroon	161	120	41	745	270	29-Jul-21	28-Jul-24
Central African Rep.	84	48	36	213	191	20-Dec-19	19-Dec-22
Congo, Dem.Rep.of	1,066	914	152	685	64	15-Jul-21	14-Jul-24
Gambia	55	20	35	69	111	23-Mar-20	22-Jun-23
Kenya	407	244	163	801	148	02-Apr-21	01-Jun-24
Liberia	155	104	51	190	73	11-Dec-19	10-Dec-23
Madagascar	220	171	49	584	239	29-Mar-21	28-Jul-24
Mali	140	60	80	410	220	28-Aug-19	27-Aug-22
Sao Tome-Principe	15	6	9	22	149	02-Oct-19	01-Feb-23
Sierra Leone	124	47	78	398	192	30-Nov-18	29-Jun-23
Somalia	253	35	218	218	133	25-Mar-20	24-Mar-23
Sudan	1,733	742	992	992	157	29-Jun-21	28-Sep-24
Uganda	722	542	181	542	150	28-Jun-21	27-Jun-24
Standby Credit Facility (2)	330	144	186	294			
Honduras	179	36	143	143	57	15-Jul-19	14-Jan-22
Senegal	151	108	43	151	47	07-Jun-21	06-Dec-22
Total Current PRGT Arrangements (16)	5,724	3,269	2,455	6,545			
Memorandum Items:							
Credit outstanding from members without current arrangement and outright loans.				7,613			
Total Credit Outstanding.				14,157			

1/ -- Indicates zero value, zero indicates amounts less than SDR 0.5 million. Totals may not add due to rounding.

2/ Includes Loans Outstanding under expired arrangements and outright loans.