



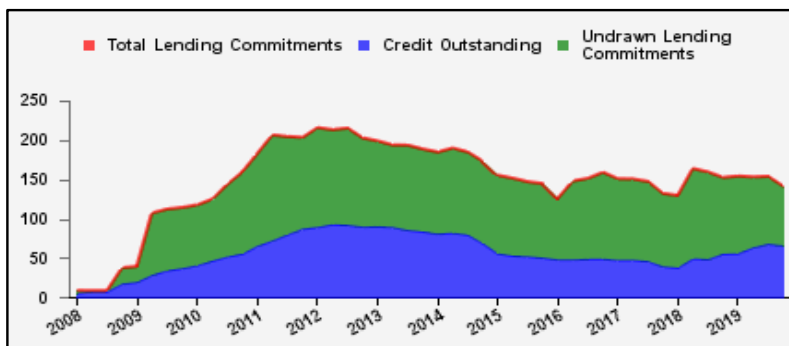
Weekly Report on Key Financial Statistics

Table 1. Key Indicators 1/

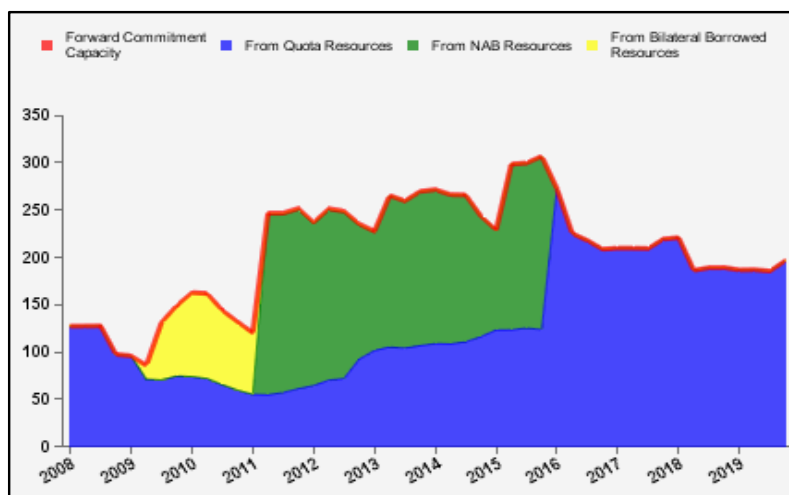
as of December 19, 2019

(In billions of SDRs, unless indicated otherwise)

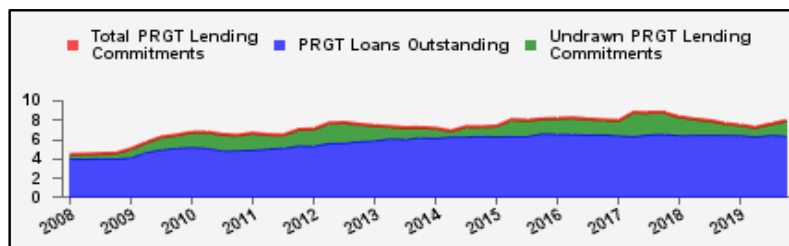
GRA Lending and Resources	SDR	USD
I. Total Lending Commitments, of which:	141.5	195.2
Undrawn Lending Commitments	75.3	103.8
Credit Outstanding	66.2	91.3
II. Forward Commitment Capacity (FCC)	196.3	270.7
III. Unactivated Borrowed Resources, of which: 2/	383.7	529.2
NAB	132.9	183.3
Bilateral Borrowing Agreements	250.8	345.9
IV. Total GRA Resources (I. + II. + III.)	721.5	995.2



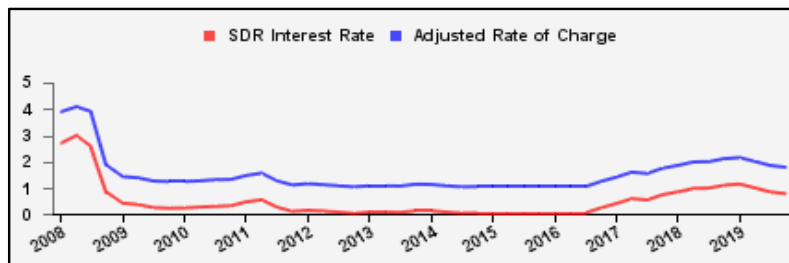
Forward Commitment Capacity (FCC)	SDR	USD
I. Usable resources (a) + (b)	350.3	483.2
(a) Fund quota resources	350.3	483.2
(b) Fund borrowed resources	--	--
II. Undrawn balances under GRA lending commitments	75.3	103.8
Precautionary 3/	54.9	75.7
Non-precautionary	20.4	28.1
III. Uncommitted usable resources (I - II)	275.0	379.4
IV. Repurchases one-year forward	2.9	4.0
V. Repayments of borrowed resources one-year forward	1.7	2.3
VI. Prudential balance	80.0	110.4
VII. Forward commitment capacity (III + IV - V - VI) 4/	196.3	270.7
(a) From Quota resources	196.3	270.7
(b) From NAB resources	--	--
(c) From Bilateral Borrowed resources	--	--



PRGT Lending and Resources	SDR	USD
I. Total Lending Commitments, of which:	7.9	10.9
Ia. Undrawn lending commitments	1.5	2.1
Ib. Loans Outstanding	6.3	8.7
II. Undrawn Loan Resources	14.4	19.9
III. Uncommitted Loan Resources (II. - Ia.)	12.9	17.8



Rates	Percent
1 SDR = USD	1.37938
SDR Interest Rate	0.777
Adjusted Rate of Charge	1.780
Adjusted Rate of Remuneration	0.775



1/ -- Indicates zero value, zero indicates amounts less than SDR 0.05 billion. Totals may not add due to rounding.

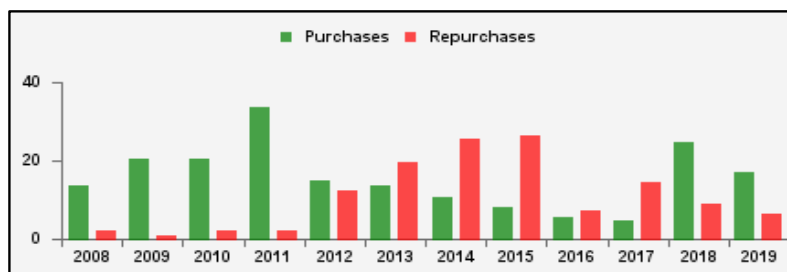
2/ Excludes 20% prudential balance and borrowing lines of participants/members that are currently not in the FTP; for the NAB, also excludes borrowing lines of participants that have not yet adhered to the NAB as well as any outstanding NAB claims and undrawn committed resources under current NAB-eligible arrangements.

3/ Undrawn balances under arrangements treated as precautionary by the authorities.

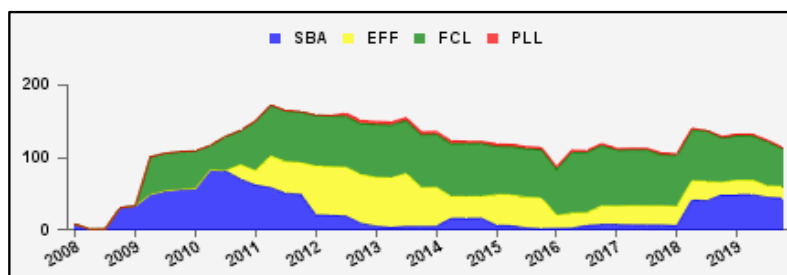
4/ Does not include the Bilateral Borrowing Agreements (activated only if the modified FCC is below SDR 100 billion).

Table 2a. Use of GRA Resources 1/
as of December 19, 2019
(In billions of SDRs, unless indicated otherwise)

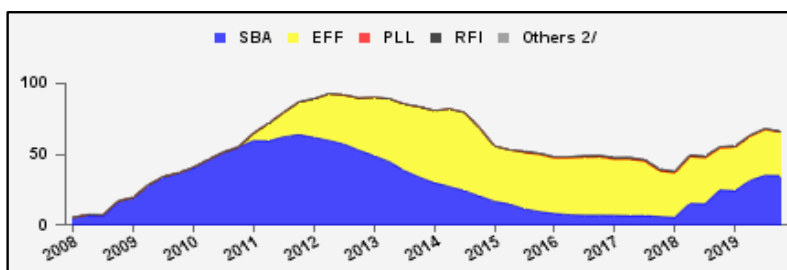
GRA Lending (Calendar year to date)	SDR	USD
Purchases	17.2	23.7
Financed by Quota Resources	17.2	23.7
Financed by Borrowings	--	--
Repurchases	6.4	8.8
Commitments Approved	52.5	72.5



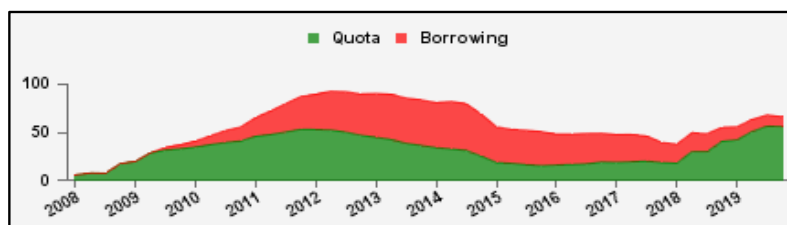
Commitments Under Current GRA Arrangements	Number of	SDR	USD
Standby Arrangement (SBA)	4	43.8	60.5
Extended Fund Facility (EFF)	14	16.0	22.1
Flexible Credit Line (FCL)	2	52.4	72.3
Precautionary and Liquidity Line (PLL)	1	2.2	3.0
Total Current Arrangements	21	114.4	157.8



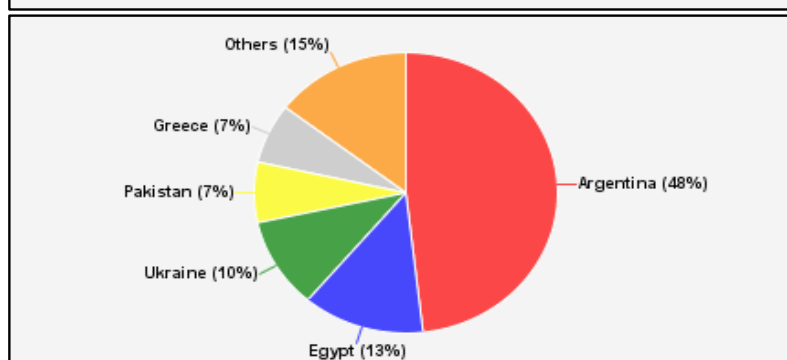
Credit Outstanding by Facility	SDR	USD
Standby Arrangement (SBA)	34.9	48.2
Extended Fund Facility (EFF)	30.7	42.3
Flexible Credit Line (FCL)	--	--
Precautionary and Liquidity Line (PLL)	--	--
Rapid Financing Instrument (RFI)	0.6	0.8
Others 2/	0.0	0.0
Total Credit Outstanding	66.2	91.3



Credit Outstanding by Financing Sources	SDR	USD
Financed by Quota Resources	56.2	77.5
Financed by Borrowings	10.1	13.9
Total Credit Outstanding	66.2	91.3



	Credit Outstanding	
Largest 5 Exposures 3/	SDR	As a % of quota
Argentina	31.9	1,001
Egypt	8.6	422
Ukraine	6.9	342
Pakistan	4.6	226
Greece	4.6	188



1/ -- Indicates zero value, zero indicates amounts less than SDR 0.05 billion. Totals may not add due to rounding.

2/ Includes outstanding credit under the former Compensatory Financing Facility; for the chart also includes outstanding credit under the former Emergency Post Conflict and Natural Disaster Assistance policy.

3/ Members with current arrangements are bolded.

Table 2b. Current Financial Arrangements (GRA)

as of December 19, 2019
(In millions of SDRs, unless indicated otherwise) 1/

Member	Amount Committed	Amount Undrawn	Amount Drawn	Credit Outstanding		Period of Arrangement	
				Amount 2/	As a % of Quota	Effective Date	Expiration Date
Standby Arrangement (4)	43,844	10,930	32,914	38,927			
Argentina	40,714	8,800	31,914	31,914	1,001	20-Jun-18	19-Jun-21
Armenia 3/	180	180	--	131	102	17-May-19	16-May-22
Honduras 3/	150	150	--	--	--	15-Jul-19	14-Jul-21
Ukraine	2,800	1,800	1,000	6,883	342	18-Dec-18	17-Feb-20
Extended Fund Facility (14)	16,008	9,777	6,231	10,646			
Angola	2,673	1,600	1,073	1,073	145	07-Dec-18	06-Dec-21
Barbados	208	103	105	105	111	01-Oct-18	30-Sep-22
Bosnia-Herzegovina	443	316	127	127	48	07-Sep-16	06-Sep-20
Cote d'Ivoire	563	129	434	434	67	12-Dec-16	11-Dec-20
Ecuador	3,035	2,385	650	879	126	11-Mar-19	10-Mar-22
Equatorial Guinea	205	205	--	--	--	18-Dec-19	17-Dec-22
Gabon	464	89	375	375	174	19-Jun-17	18-Jun-20
Georgia	210	30	180	185	88	12-Apr-17	11-Apr-21
Jordan	515	292	223	365	106	24-Aug-16	23-Mar-20
Moldova	86	10	77	126	73	07-Nov-16	20-Mar-20
Mongolia	315	157	157	157	217	24-May-17	23-May-20
Pakistan	4,268	3,552	716	4,599	226	03-Jul-19	02-Oct-22
Sri Lanka	1,071	119	952	952	165	03-Jun-16	02-Jun-20
Tunisia	1,952	791	1,162	1,269	233	20-May-16	19-May-20
Flexible Credit Line (2)	52,412	52,412	--	--			
Colombia 3/	7,848	7,848	--	--	--	25-May-18	24-May-20
Mexico 3/	44,564	44,564	--	--	--	22-Nov-19	21-Nov-21
Precautionary and Liquidity Line (1)	2,151	2,151	--	--			
Morocco 3/	2,151	2,151	--	--	--	17-Dec-18	16-Dec-20
Total Current GRA Arrangements (21)	114,414	75,270	39,144	49,574			
Memorandum Items:							
Credit outstanding from members without current arrangement and outright disbursements.				16,646			
Total Credit Outstanding.				66,220			

1/ -- Indicates zero value, zero indicates amounts less than SDR 0.5 million. Totals may not add due to rounding.

2/ Includes Credit Outstanding under expired arrangements and outright disbursements.

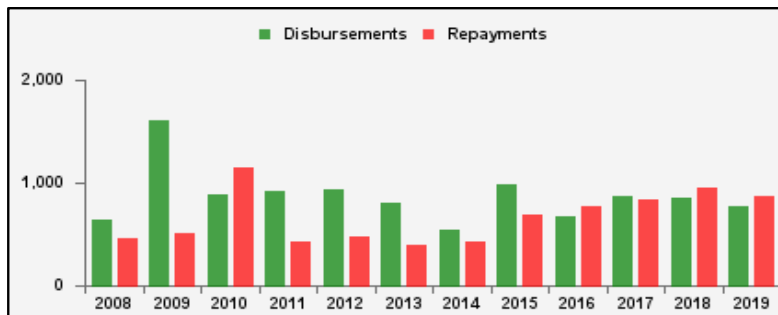
3/ The undrawn commitment of the arrangement is treated as precautionary by the authorities.

Table 3a. Use of Concessional PRGT Resources 1/

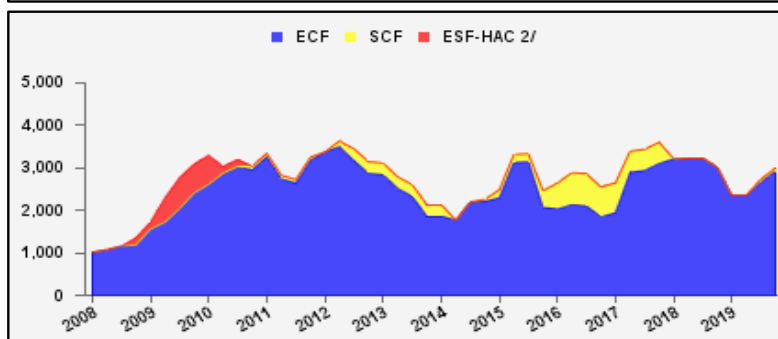
as of December 19, 2019

(In millions of SDRs, unless indicated otherwise)

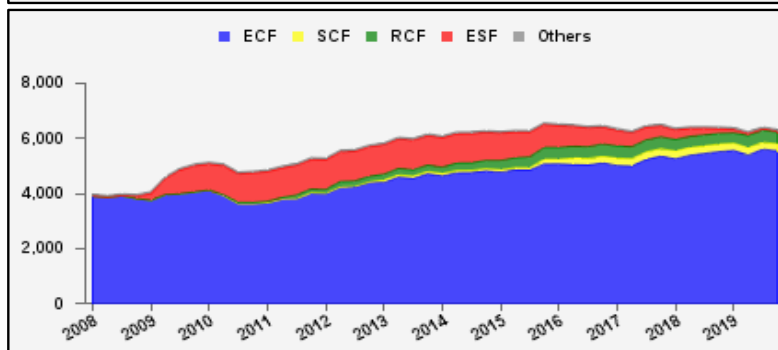
PRGT Lending (Calendar year to date)	SDR	USD
Disbursements	775.1	1069.2
Repayments	865.5	1193.9
Commitments Approved	1154.2	1592.0



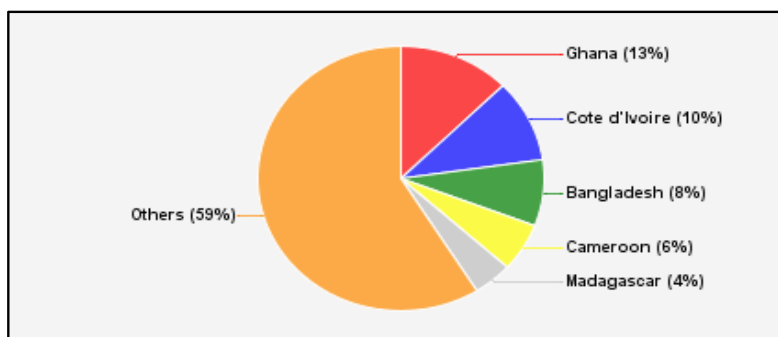
Commitments Under Current PRGT Arrangements	Number of	SDR	USD
Extended Credit Facility (ECF)	18	2,928.0	4,038.8
Standby Credit Facility (SCF)	1	74.9	103.4
Total Current Arrangements	19	3,002.9	4,142.2



Loans Outstanding by Facility	SDR	USD
Extended Credit Facility (ECF)	5,550.7	7,656.5
Standby Credit Facility (SCF)	254.2	350.7
Rapid Credit Facility (RCF)	428.9	591.6
(former) Exogenous Shocks Facility (ESF)	27.4	37.9
Others 3/	74.5	102.8
Total Loans Outstanding	6,335.8	8,739.4



Loans Outstanding		
Largest 5 Exposures 4/	SDR	As a % of quota
Ghana	799.6	108
Cote d'Ivoire	640.2	98
Bangladesh	512.0	48
Cameroon	372.6	135
Madagascar	280.2	115



1/ -- Indicates zero value, zero indicates amounts less than SDR 0.05 million. Totals may not add due to rounding.

2/ The last commitment under the old ESF-HAC Facility expired on December 3, 2011.

3/ Includes outstanding and overdue loans under the (former) Structural Adjustment Facility and Trust Fund.

4/ Members with current arrangements are bolded.

Table 3b. Current Financial Arrangements (PRGT)

as of December 19, 2019
(In millions of SDRs, unless indicated otherwise) 1/

Member	Amount Committed	Amount Undrawn	Amount Drawn	Loans Outstanding		Period of Arrangement	
				Amount 2/	As a % of Quota	Effective Date	Expiration Date
Extended Credit Facility (18)	2,928	1,203	1,725	3,551			
Afghanistan	32	5	27	40	12	20-Jul-16	31-Dec-19
Benin	111	32	80	119	96	07-Apr-17	31-Jul-20
Burkina Faso	108	54	54	155	129	14-Mar-18	13-Mar-21
Cameroon	483	110	373	373	135	26-Jun-17	25-Jun-20
Chad	224	56	168	258	184	30-Jun-17	29-Jun-20
Congo, Rep. of	324	292	32	34	21	11-Jul-19	10-Jul-22
Cote d'Ivoire	281	65	217	640	98	12-Dec-16	11-Dec-20
Guinea	120	52	69	245	115	11-Dec-17	10-Dec-20
Liberia	155	138	17	163	63	11-Dec-19	10-Dec-23
Madagascar	251	31	219	280	115	27-Jul-16	26-Feb-20
Malawi	106	52	54	181	130	30-Apr-18	29-Apr-21
Mali	140	120	20	236	127	28-Aug-19	27-Aug-22
Mauritania	116	33	83	117	91	06-Dec-17	05-Dec-20
Moldova	43	5	38	87	51	07-Nov-16	20-Mar-20
Niger	118	28	90	187	142	23-Jan-17	22-Apr-20
Sao Tome-Principe	13	11	2	7	45	02-Oct-19	01-Feb-23
Sierra Leone	124	93	31	266	128	30-Nov-18	29-Jun-22
Togo	176	25	151	162	110	05-May-17	04-May-20
Standby Credit Facility (1)	75	75	--	--			
Honduras 3/	75	75	--	--	--	15-Jul-19	14-Jul-21
Total Current PRGT Arrangements (19)	3,003	1,278	1,725	3,551			
Memorandum Items:							
Credit outstanding from members without current arrangement and outright loans.				2,785			
Total Credit Outstanding.				6,336			

1/ -- Indicates zero value, zero indicates amounts less than SDR 0.5 million. Totals may not add due to rounding.

2/ Includes Loans Outstanding under expired arrangements and outright loans.

3/ The undrawn commitment of the arrangement is treated as precautionary by the authorities.