



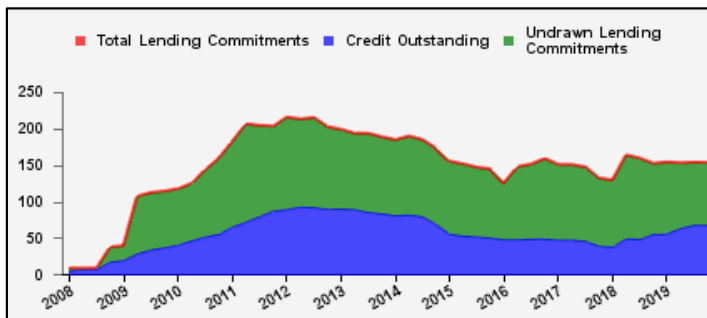
Weekly Report on Key Financial Statistics

Table 1. Key Indicators 1/

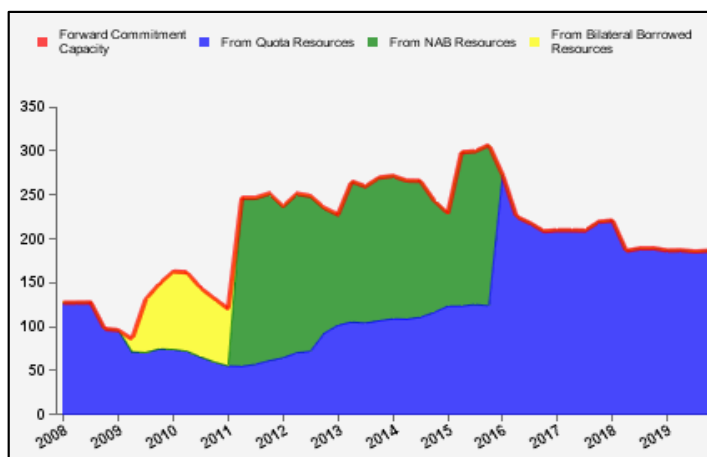
as of November 07, 2019

(In billions of SDRs, unless indicated otherwise)

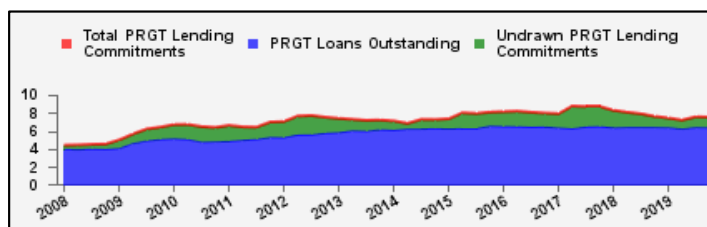
GRA Lending and Resources	SDR	USD
I. Total Lending Commitments, of which:	153.6	211.3
Undrawn Lending Commitments	85.4	117.6
Credit Outstanding	68.1	93.7
II. Forward Commitment Capacity (FCC)	186.2	256.3
III. Unactivated Borrowed Resources, of which: 2/	382.1	525.8
NAB	131.2	180.6
Bilateral Borrowing Agreements	250.9	345.2
IV. Total GRA Resources (I. + II. + III.)	721.9	993.3



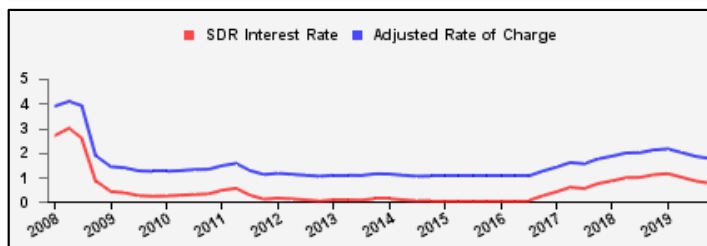
Forward Commitment Capacity (FCC)	SDR	USD
I. Usable resources (a) + (b)	350.1	481.7
(a) Fund quota resources	350.1	481.7
(b) Fund borrowed resources	--	--
II. Undrawn balances under GRA lending commitments	85.4	117.6
Precautionary 3/	65.0	89.4
Non-precautionary	20.4	28.1
III. Uncommitted usable resources (I - II)	264.6	364.2
IV. Repurchases one-year forward	4.5	6.2
V. Repayments of borrowed resources one-year forward	2.9	4.0
VI. Prudential balance	80.0	110.1
VII. Forward commitment capacity (III + IV - V - VI) 4/	186.2	256.3
(a) From Quota resources	186.2	256.3
(b) From NAB resources	--	--
(c) From Bilateral Borrowed resources	--	--



PRGT Lending and Resources	SDR	USD
I. Total Lending Commitments, of which:	7.5	10.3
Ia. Undrawn lending commitments	1.1	1.6
Ib. Loans Outstanding	6.4	8.8
II. Undrawn Loan Resources	14.5	20.0
III. Uncommitted Loan Resources (II. - Ia.)	13.4	18.4



Rates	Percent
1 SDR = USD	1.37609
SDR Interest Rate	0.760
Adjusted Rate of Charge	1.763
Adjusted Rate of Remuneration	0.756



1/ -- Indicates zero value, zero indicates amounts less than SDR 0.05 billion. Totals may not add due to rounding.

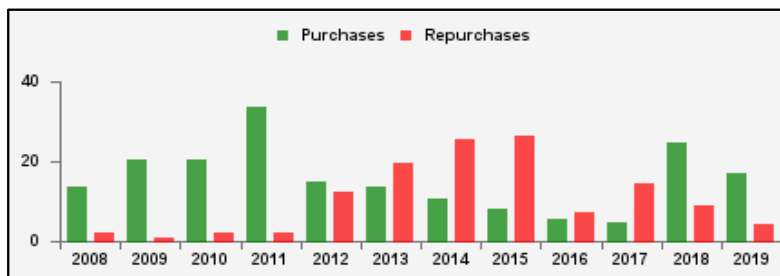
2/ Excludes 20% prudential balance and borrowing lines of participants/members that are currently not in the FTP; for the NAB, also excludes borrowing lines of participants that have not yet adhered to the NAB as well as any outstanding NAB claims and undrawn committed resources under current NAB-eligible arrangements.

3/ Undrawn balances under arrangements treated as precautionary by the authorities.

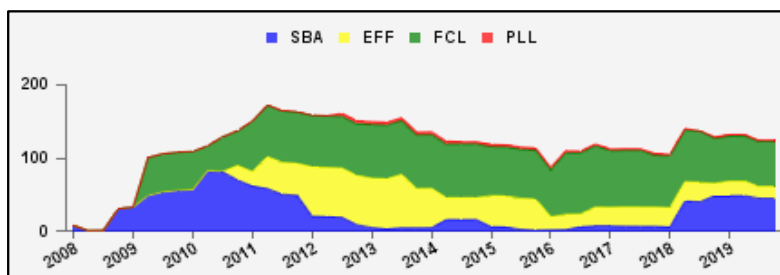
4/ Does not include the Bilateral Borrowing Agreements (activated only if the modified FCC is below SDR 100 billion).

Table 2a. Use of GRA Resources 1/
as of November 07, 2019
(In billions of SDRs, unless indicated otherwise)

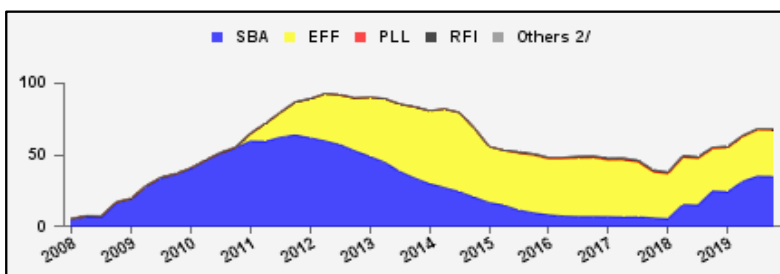
GRA Lending (Calendar year to date)	SDR	USD
Purchases	16.8	23.1
Financed by Quota Resources	16.8	23.1
Financed by Borrowings	--	--
Repurchases	4.1	5.6
Commitments Approved	7.6	10.5



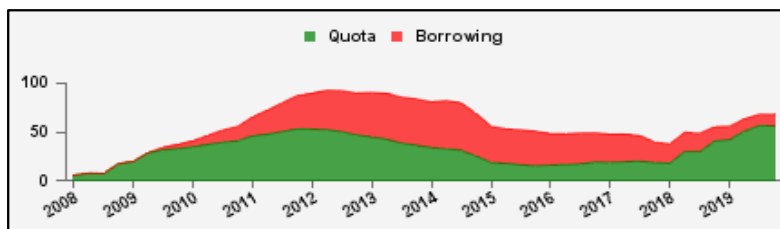
Commitments Under Current GRA Arrangements	Number of	SDR	USD
Standby Arrangement (SBA)	5	45.0	62.0
Extended Fund Facility (EFF)	13	15.7	21.6
Flexible Credit Line (FCL)	2	61.3	84.4
Precautionary and Liquidity Line (PLL)	1	2.2	3.0
Total Current Arrangements	21	124.2	170.9



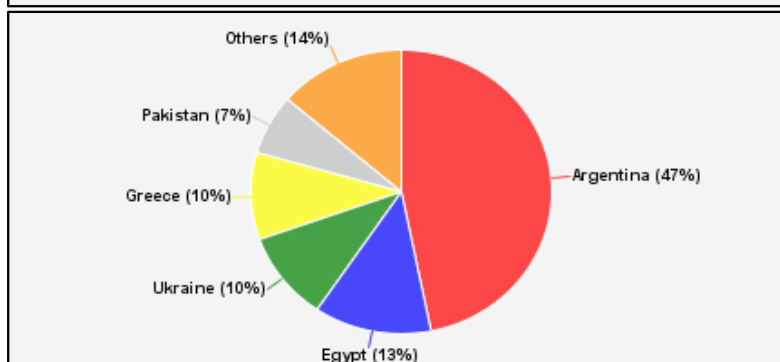
Credit Outstanding by Facility	SDR	USD
Standby Arrangement (SBA)	34.9	48.1
Extended Fund Facility (EFF)	32.6	44.8
Flexible Credit Line (FCL)	--	--
Precautionary and Liquidity Line (PLL)	--	--
Rapid Financing Instrument (RFI)	0.6	0.8
Others 2/	0.0	0.0
Total Credit Outstanding	68.1	93.7



Credit Outstanding by Financing Sources	SDR	USD
Financed by Quota Resources	56.4	77.6
Financed by Borrowings	11.8	16.2
Total Credit Outstanding	68.1	93.7



	Credit Outstanding	
Largest 5 Exposures 3/	SDR	As a % of quota
Argentina	31.9	1,001
Egypt	8.6	422
Ukraine	6.9	342
Greece	6.7	277
Pakistan	4.7	229



1/ -- Indicates zero value, zero indicates amounts less than SDR 0.05 billion. Totals may not add due to rounding.

2/ Includes outstanding credit under the former Compensatory Financing Facility; for the chart also includes outstanding credit under the former Emergency Post Conflict and Natural Disaster Assistance policy.

3/ Members with current arrangements are bolded.

Table 2b. Current Financial Arrangements (GRA)

as of November 07, 2019
(In millions of SDRs, unless indicated otherwise) 1/

Member	Amount Committed	Amount Undrawn	Amount Drawn	Credit Outstanding		Period of Arrangement	
				Amount 2/	As a % of Quota	Effective Date	Expiration Date
Standby Arrangement (5)	45,039	12,125	32,914	39,390			
Argentina	40,714	8,800	31,914	31,914	1,001	20-Jun-18	19-Jun-21
Armenia 3/	180	180	--	137	106	17-May-19	16-May-22
Honduras 3/	150	150	--	--	--	15-Jul-19	14-Jul-21
Jamaica 3/	1,195	1,195	--	457	119	11-Nov-16	10-Nov-19
Ukraine	2,800	1,800	1,000	6,883	342	18-Dec-18	17-Feb-20
Extended Fund Facility (13)	15,674	9,841	5,833	10,350			
Angola	2,673	1,779	894	894	121	07-Dec-18	06-Dec-21
Barbados	208	138	70	70	74	01-Oct-18	30-Sep-22
Bosnia-Herzegovina	443	316	127	127	48	07-Sep-16	06-Sep-20
Cote d'Ivoire	434	65	369	369	57	12-Dec-16	11-Dec-19
Ecuador	3,035	2,385	650	912	131	11-Mar-19	10-Mar-22
Gabon	464	179	286	286	132	19-Jun-17	18-Jun-20
Georgia	210	60	150	155	74	12-Apr-17	11-Apr-20
Jordan	515	292	223	365	106	24-Aug-16	23-Mar-20
Moldova	86	10	77	126	73	07-Nov-16	20-Mar-20
Mongolia	315	157	157	157	217	24-May-17	23-May-20
Pakistan	4,268	3,552	716	4,659	229	03-Jul-19	02-Oct-22
Sri Lanka	1,071	119	952	952	165	03-Jun-16	02-Jun-20
Tunisia	1,952	791	1,162	1,278	234	20-May-16	19-May-20
Flexible Credit Line (2)	61,324	61,324	--	--			
Colombia 3/	7,848	7,848	--	--	--	25-May-18	24-May-20
Mexico 3/	53,476	53,476	--	--	--	29-Nov-17	28-Nov-19
Precautionary and Liquidity Line (1)	2,151	2,151	--	--			
Morocco 3/	2,151	2,151	--	--	--	17-Dec-18	16-Dec-20
Total Current GRA Arrangements (21)	124,188	85,442	38,747	49,740			
Memorandum Items:							
Credit outstanding from members without current arrangement and outright disbursements.				18,385			
Total Credit Outstanding.				68,125			

1/ -- Indicates zero value, zero indicates amounts less than SDR 0.5 million. Totals may not add due to rounding.

2/ Includes Credit Outstanding under expired arrangements and outright disbursements.

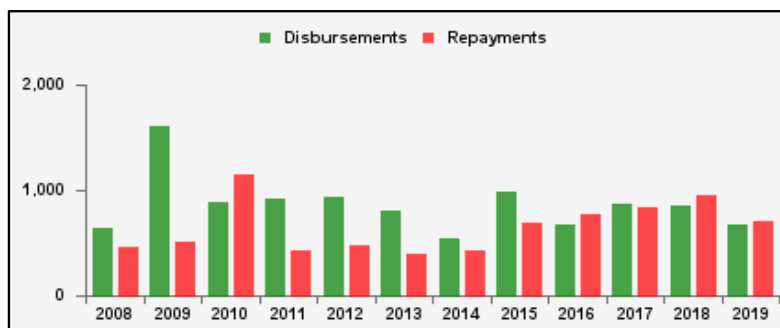
3/ The undrawn commitment of the arrangement is treated as precautionary by the authorities.

Table 3a. Use of Concessional PRGT Resources 1/

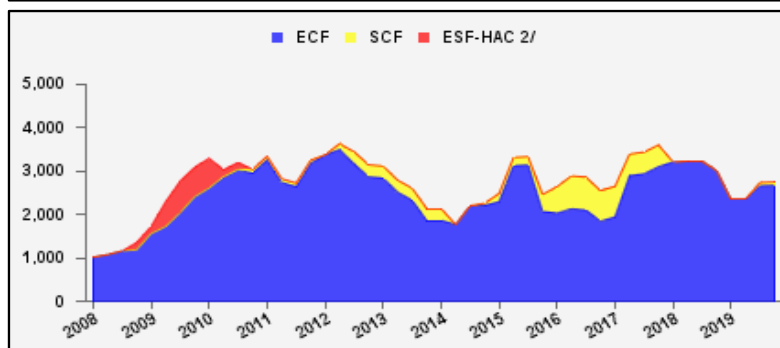
as of November 07, 2019

(In millions of SDRs, unless indicated otherwise)

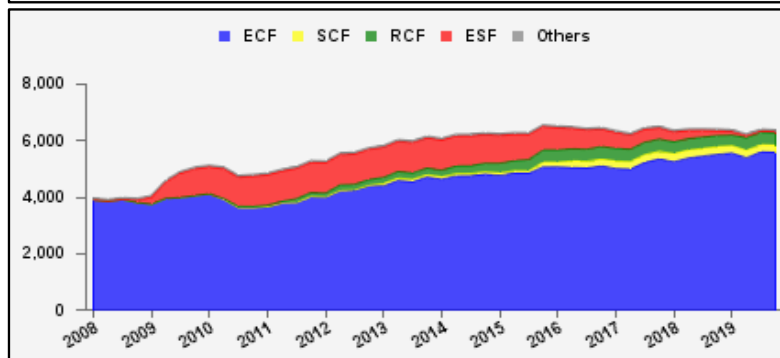
PRGT Lending (Calendar year to date)	SDR	USD
Disbursements	677.8	932.7
Repayments	710.9	978.3
Commitments Approved	640.4	881.2



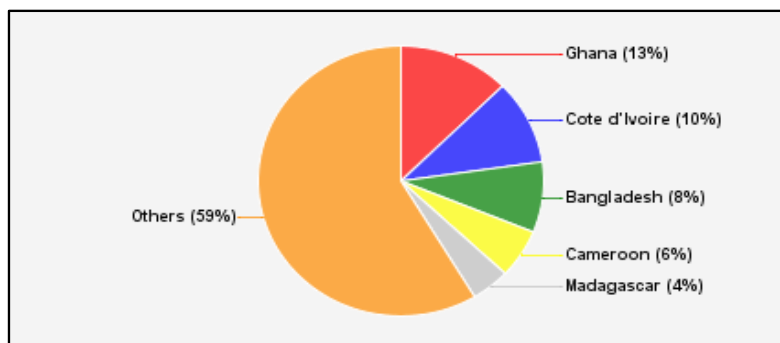
Commitments Under Current PRGT Arrangements	Number of	SDR	USD
Extended Credit Facility (ECF)	17	2,680.7	3,688.9
Standby Credit Facility (SCF)	1	74.9	103.1
Total Current Arrangements	18	2,755.7	3,792.0



Loans Outstanding by Facility	SDR	USD
Extended Credit Facility (ECF)	5,587.0	7,688.2
Standby Credit Facility (SCF)	254.6	350.3
Rapid Credit Facility (RCF)	434.1	597.4
(former) Exogenous Shocks Facility (ESF)	42.8	58.8
Others 3/	74.5	102.6
Total Loans Outstanding	6,393.0	8,797.3



Loans Outstanding		
Largest 5 Exposures 4/	SDR	As a % of quota
Ghana	805.6	109
Cote d'Ivoire	647.3	100
Bangladesh	539.4	51
Cameroon	372.6	135
Madagascar	280.2	115



1/ -- Indicates zero value, zero indicates amounts less than SDR 0.05 million. Totals may not add due to rounding.

2/ The last commitment under the old ESF-HAC Facility expired on December 3, 2011.

3/ Includes outstanding and overdue loans under the (former) Structural Adjustment Facility and Trust Fund.

4/ Members with current arrangements are bolded.

Table 3b. Current Financial Arrangements (PRGT)

as of November 07, 2019

(In millions of SDRs, unless indicated otherwise) 1/

Member	Amount Committed	Amount Undrawn	Amount Drawn	Loans Outstanding		Period of Arrangement	
				Amount 2/	As a % of Quota	Effective Date	Expiration Date
Extended Credit Facility (17)	2,681	1,053	1,628	3,362			
Afghanistan	32	5	27	41	13	20-Jul-16	31-Dec-19
Benin	111	32	80	121	98	07-Apr-17	06-Apr-20
Burkina Faso	108	54	54	159	132	14-Mar-18	13-Mar-21
Cameroon	483	110	373	373	135	26-Jun-17	25-Jun-20
Chad	224	56	168	258	184	30-Jun-17	29-Jun-20
Congo, Rep. of	324	292	32	34	21	11-Jul-19	10-Jul-22
Cote d'Ivoire	217	32	185	647	100	12-Dec-16	11-Dec-19
Guinea	120	52	69	247	115	11-Dec-17	10-Dec-20
Madagascar	251	31	219	280	115	27-Jul-16	26-Feb-20
Malawi	78	56	22	150	108	30-Apr-18	29-Apr-21
Mali	140	120	20	238	128	28-Aug-19	27-Aug-22
Mauritania	116	50	66	104	81	06-Dec-17	05-Dec-20
Moldova	43	5	38	87	51	07-Nov-16	20-Mar-20
Niger	118	28	90	187	142	23-Jan-17	22-Apr-20
Sao Tome-Principe	13	11	2	7	45	02-Oct-19	01-Feb-23
Sierra Leone	124	93	31	267	129	30-Nov-18	29-Jun-22
Togo	176	25	151	163	111	05-May-17	04-May-20
Standby Credit Facility (1)	75	75	--	--			
Honduras 3/	75	75	--	--	--	15-Jul-19	14-Jul-21
Total Current PRGT Arrangements (18)	2,756	1,128	1,628	3,362			
Memorandum Items:							
Credit outstanding from members without current arrangement and outright loans.				3,031			
Total Credit Outstanding.				6,393			

1/ -- Indicates zero value, zero indicates amounts less than SDR 0.5 million. Totals may not add due to rounding.

2/ Includes Loans Outstanding under expired arrangements and outright loans.

3/ The undrawn commitment of the arrangement is treated as precautionary by the authorities.