



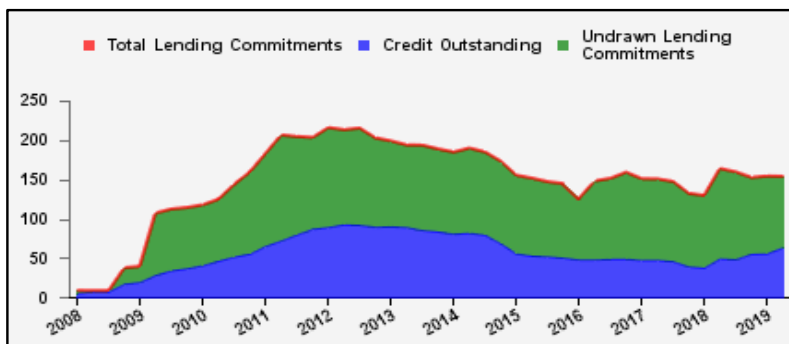
## Weekly Report on Key Financial Statistics

**Table 1. Key Indicators 1/**

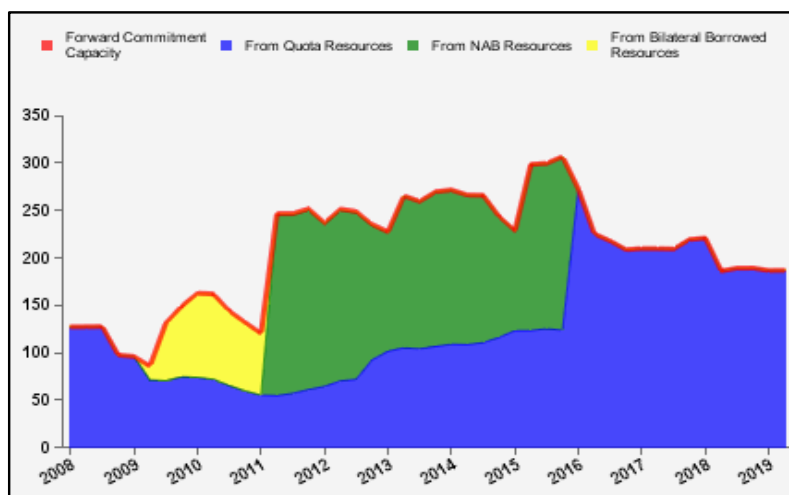
as of May 23, 2019

(In billions of SDRs, unless indicated otherwise)

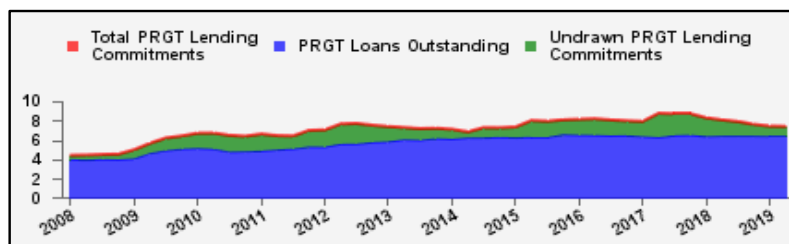
<b>GRA Lending and Resources</b>	SDR	USD
I. Total Lending Commitments, of which:	153.8	211.7
Undrawn Lending Commitments	90.3	124.3
Credit Outstanding	63.5	87.4
II. Forward Commitment Capacity (FCC)	186.8	257.2
III. Unactivated Borrowed Resources, of which: 2/	381.0	524.5
NAB	129.8	178.6
Bilateral Borrowing Agreements	251.3	345.9
IV. Total GRA Resources (I. + II. + III.)	721.7	993.4



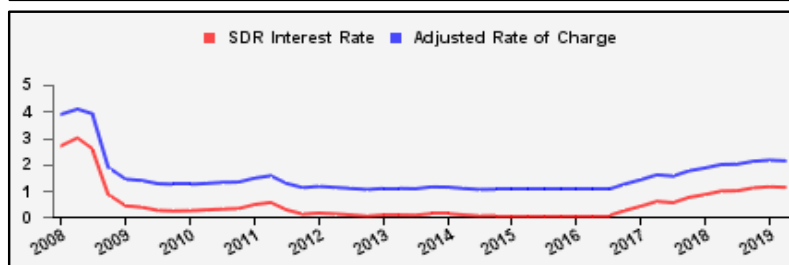
<b>Forward Commitment Capacity (FCC)</b>	SDR	USD
I. Usable resources (a) + (b)	355.7	489.7
(a) Fund quota resources	355.7	489.7
(b) Fund borrowed resources	--	--
II. Undrawn balances under GRA lending commitments	90.3	124.3
Precautionary 3/	64.9	89.3
Non-precautionary	25.5	35.0
III. Uncommitted usable resources (I - II)	265.4	365.4
IV. Repurchases one-year forward	4.5	6.2
V. Repayments of borrowed resources one-year forward	3.1	4.3
VI. Prudential balance	80.0	110.1
VII. Forward commitment capacity (III + IV - V - VI) 4/	186.8	257.2
(a) From Quota resources	186.8	257.2
(b) From NAB resources	--	--
(c) From Bilateral Borrowed resources	--	--



<b>PRGT Lending and Resources</b>	SDR	USD
I. Total Lending Commitments, of which:	7.4	10.2
Ia. Undrawn lending commitments	1.0	1.4
Ib. Loans Outstanding	6.4	8.8
II. Undrawn Loan Resources	14.9	20.5
III. Uncommitted Loan Resources (II. - Ia.)	13.9	19.2



<b>Rates</b>	Percent
1 SDR = USD	1.37656
SDR Interest Rate	1.122
Adjusted Rate of Charge	2.126
Adjusted Rate of Remuneration	1.117



1/ -- Indicates zero value, zero indicates amounts less than SDR 0.05 billion. Totals may not add due to rounding.

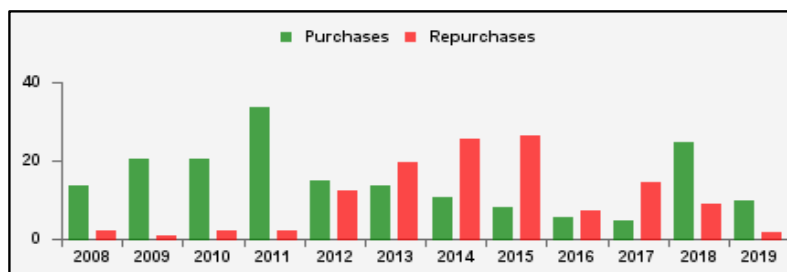
2/ Excludes 20% prudential balance and borrowing lines of participants/members that are currently not in the FTP; for the NAB, also excludes borrowing lines of participants that have not yet adhered to the NAB as well as any outstanding NAB claims and undrawn committed resources under current NAB-eligible arrangements.

3/ Undrawn balances under arrangements treated as precautionary by the authorities.

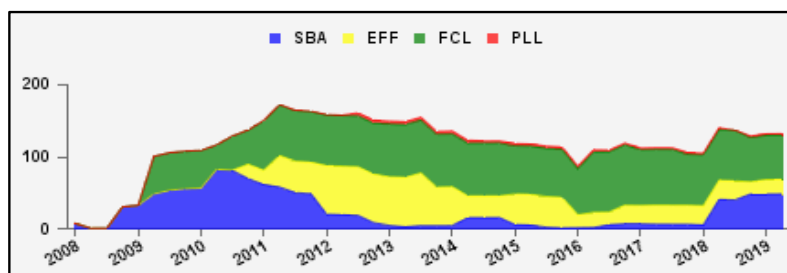
4/ Does not include the Bilateral Borrowing Agreements (activated only if the modified FCC is below SDR 100 billion).

**Table 2a. Use of GRA Resources 1/**  
as of May 23, 2019  
(In billions of SDRs, unless indicated otherwise)

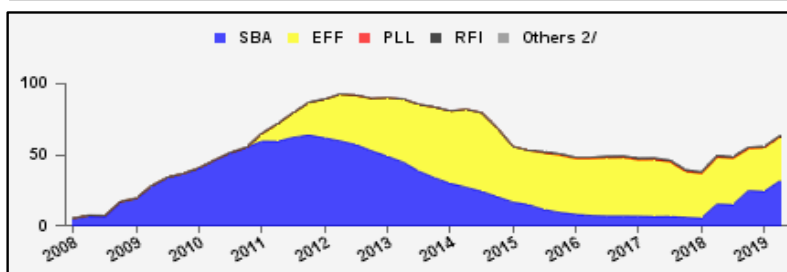
<b>GRA Lending (Calendar year to date)</b>	SDR	USD
Purchases	9.9	13.7
Financed by Quota Resources	9.9	13.7
Financed by Borrowings	--	--
Repurchases	1.8	2.5
Commitments Approved	3.2	4.4



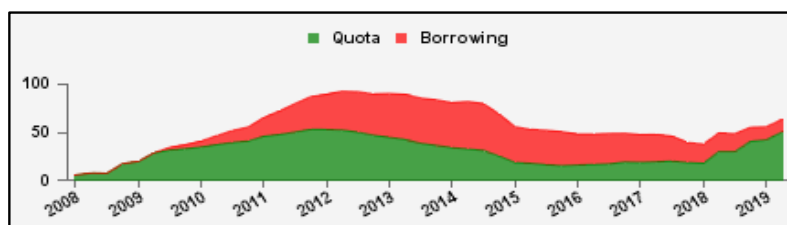
<b>Commitments Under Current GRA Arrangements</b>	Number of	SDR	USD
Standby Arrangement (SBA)	5	48.7	67.1
Extended Fund Facility (EFF)	13	20.1	27.7
Flexible Credit Line (FCL)	2	61.3	84.4
Precautionary and Liquidity Line (PLL)	1	2.2	3.0
<b>Total Current Arrangements</b>	<b>21</b>	<b>132.3</b>	<b>182.1</b>



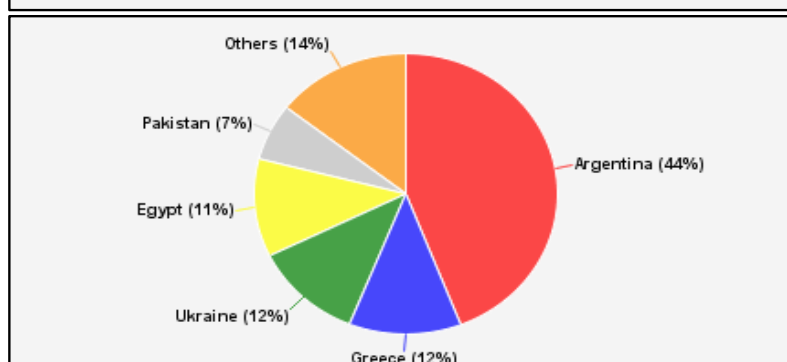
<b>Credit Outstanding by Facility</b>	SDR	USD
Standby Arrangement (SBA)	31.6	43.5
Extended Fund Facility (EFF)	31.0	42.7
Flexible Credit Line (FCL)	--	--
Precautionary and Liquidity Line (PLL)	--	--
Rapid Financing Instrument (RFI)	0.8	1.1
Others 2/	0.0	0.0
<b>Total Credit Outstanding</b>	<b>63.5</b>	<b>87.4</b>



<b>Credit Outstanding by Financing Sources</b>	SDR	USD
Financed by Quota Resources	50.3	69.2
Financed by Borrowings	13.2	18.2
<b>Total Credit Outstanding</b>	<b>63.5</b>	<b>87.4</b>



<b>Credit Outstanding</b>		
<b>Largest 5 Exposures 3/</b>	SDR	As a % of quota
<b>Argentina</b>	28.0	879
Greece	7.6	312
<b>Ukraine</b>	7.4	368
<b>Egypt</b>	7.2	352
Pakistan	4.2	204



1/ -- Indicates zero value, zero indicates amounts less than SDR 0.05 billion. Totals may not add due to rounding.

2/ Includes outstanding credit under the former Compensatory Financing Facility; for the chart also includes outstanding credit under the former Emergency Post Conflict and Natural Disaster Assistance policy.

3/ Members with current arrangements are bolded.

**Table 2b. Current Financial Arrangements (GRA)**

as of May 23, 2019  
(In millions of SDRs, unless indicated otherwise) 1/

Member	Amount Committed	Amount Undrawn	Amount Drawn	Credit Outstanding		Period of Arrangement	
				Amount 2/	As a % of Quota	Effective Date	Expiration Date
<b>Standby Arrangement (5)</b>	<b>48,720</b>	<b>18,212</b>	<b>30,508</b>	<b>38,111</b>			
Argentina	40,714	12,700	28,014	28,014	879	20-Jun-18	19-Jun-21
Armenia 3/	180	180	--	150	116	17-May-19	16-May-22
Iraq	3,831	2,337	1,494	2,051	123	07-Jul-16	06-Jul-19
Jamaica 3/	1,195	1,195	--	490	128	11-Nov-16	10-Nov-19
Ukraine	2,800	1,800	1,000	7,407	368	18-Dec-18	17-Feb-20
<b>Extended Fund Facility (13)</b>	<b>20,096</b>	<b>8,622</b>	<b>11,474</b>	<b>12,337</b>			
Angola	2,673	1,958	715	715	97	07-Dec-18	06-Dec-21
Barbados	208	173	35	35	37	01-Oct-18	30-Sep-22
Bosnia-Herzegovina	443	316	127	148	56	07-Sep-16	06-Sep-20
Cote d'Ivoire	434	129	305	305	47	12-Dec-16	11-Dec-19
Ecuador	3,035	2,565	470	731	105	11-Mar-19	10-Mar-22
Egypt	8,597	1,433	7,164	7,164	352	11-Nov-16	10-Nov-19
Gabon	464	179	286	286	132	19-Jun-17	18-Jun-20
Georgia	210	90	120	145	69	12-Apr-17	11-Apr-20
Jordan	515	292	223	493	144	24-Aug-16	23-Mar-20
Moldova	86	32	54	116	67	07-Nov-16	06-Nov-19
Mongolia	315	157	157	157	217	24-May-17	23-May-20
Sri Lanka	1,071	237	834	834	144	03-Jun-16	02-Jun-20
Tunisia	2,046	1,061	985	1,209	222	20-May-16	19-May-20
<b>Flexible Credit Line (2)</b>	<b>61,324</b>	<b>61,324</b>	--	--			
Colombia 3/	7,848	7,848	--	--	--	25-May-18	24-May-20
Mexico 3/	53,476	53,476	--	--	--	29-Nov-17	28-Nov-19
<b>Precautionary and Liquidity Line (1)</b>	<b>2,151</b>	<b>2,151</b>	--	--			
Morocco 3/	2,151	2,151	--	--	--	17-Dec-18	16-Dec-20
<b>Total Current GRA Arrangements (21)</b>	<b>132,291</b>	<b>90,309</b>	<b>41,982</b>	<b>50,448</b>			
Memorandum Items:							
Credit outstanding from members without current arrangement and outright disbursements.				13,057			
Total Credit Outstanding.				63,506			

1/ -- Indicates zero value, zero indicates amounts less than SDR 0.5 million. Totals may not add due to rounding.

2/ Includes Credit Outstanding under expired arrangements and outright disbursements.

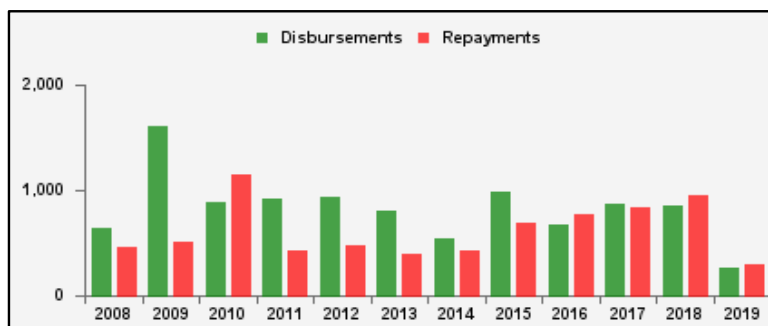
3/ The undrawn commitment of the arrangement is treated as precautionary by the authorities.

**Table 3a. Use of Concessional PRGT Resources 1/**

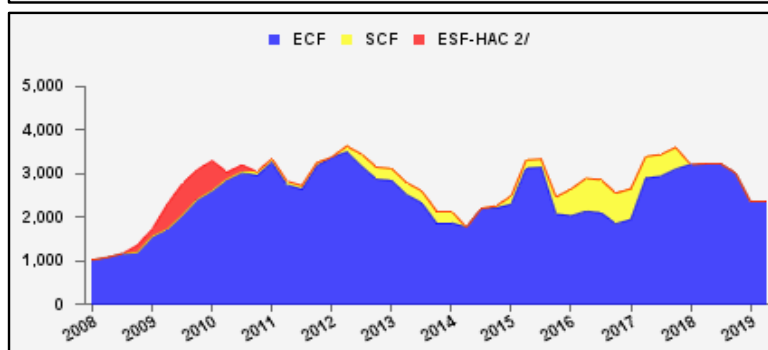
as of May 23, 2019

(In millions of SDRs, unless indicated otherwise)

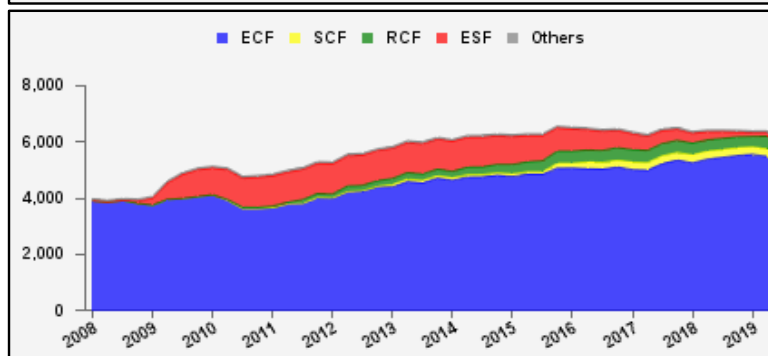
<b>PRGT Lending (Calendar year to date)</b>	<b>SDR</b>	<b>USD</b>
Disbursements	267.5	368.3
Repayments	289.9	399.0
Commitments Approved	85.2	117.3



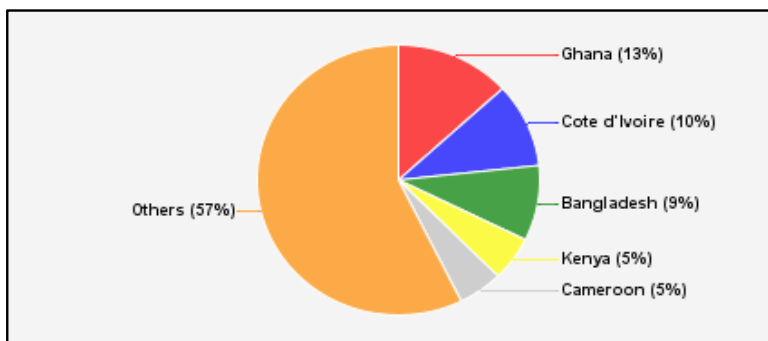
<b>Commitments Under Current PRGT Arrangements</b>	<b>Number of</b>	<b>SDR</b>	<b>USD</b>
Extended Credit Facility (ECF)	16	2,359.9	3,248.5
Standby Credit Facility (SCF)	--	--	--
Total Current Arrangements	16	2,359.9	3,248.5



<b>Loans Outstanding by Facility</b>	<b>SDR</b>	<b>USD</b>
Extended Credit Facility (ECF)	5,488.2	7,554.8
Standby Credit Facility (SCF)	263.6	362.8
Rapid Credit Facility (RCF)	454.2	625.2
(former) Exogenous Shocks Facility (ESF)	123.4	169.9
Others 3/	74.5	102.6
Total Loans Outstanding	6,403.8	8,815.3



<b>Loans Outstanding</b>		
<b>Largest 5 Exposures 4/</b>	<b>SDR</b>	<b>As a % of quota</b>
Ghana	844.4	114
<b>Cote d'Ivoire</b>	646.6	99
Bangladesh	576.0	54
Kenya	339.7	63
<b>Cameroon</b>	326.7	118



1/ -- Indicates zero value, zero indicates amounts less than SDR 0.05 million. Totals may not add due to rounding.

2/ The last commitment under the old ESF-HAC Facility expired on December 3, 2011.

3/ Includes outstanding and overdue loans under the (former) Structural Adjustment Facility and Trust Fund.

4/ Members with current arrangements are bolded.

**Table 3b. Current Financial Arrangements (PRGT)**  
as of May 23, 2019  
(In millions of SDRs, unless indicated otherwise) 1/

Member	Amount Committed	Amount Undrawn	Amount Drawn	Loans Outstanding		Period of Arrangement	
				Amount 2/	As a % of Quota	Effective Date	Expiration Date
<b>Extended Credit Facility (16)</b>	<b>2,360</b>	<b>989</b>	<b>1,371</b>	<b>3,031</b>			
Afghanistan	32	10	23	38	12	20-Jul-16	31-Dec-19
Benin	111	48	64	111	90	07-Apr-17	06-Apr-20
Burkina Faso	108	72	36	153	127	14-Mar-18	13-Mar-21
Cameroon	483	166	317	327	118	26-Jun-17	25-Jun-20
Central African Rep.	134	23	111	144	130	20-Jul-16	19-Jul-19
Chad	224	84	140	230	164	30-Jun-17	29-Jun-20
Cote d'Ivoire	217	65	152	647	99	12-Dec-16	11-Dec-19
Guinea	120	69	52	231	108	11-Dec-17	10-Dec-20
Guinea-Bissau	23	6	17	24	85	10-Jul-15	09-Jul-19
Madagascar	251	63	188	249	102	27-Jul-16	26-Nov-19
Malawi	78	56	22	156	113	30-Apr-18	29-Apr-21
Mauritania	116	66	50	95	74	06-Dec-17	05-Dec-20
Moldova	43	16	27	93	54	07-Nov-16	06-Nov-19
Niger	118	62	56	158	120	23-Jan-17	22-Jan-20
Sierra Leone	124	109	16	258	124	30-Nov-18	29-Jun-22
Togo	176	75	101	117	80	05-May-17	04-May-20
<b>Total Current PRGT Arrangements (16)</b>	<b>2,360</b>	<b>989</b>	<b>1,371</b>	<b>3,031</b>			
Memorandum Items:							
Credit outstanding from members without current arrangement and outright loans.				3,373			
Total Credit Outstanding.				6,404			

1/ -- Indicates zero value, zero indicates amounts less than SDR 0.5 million. Totals may not add due to rounding.

2/ Includes Loans Outstanding under expired arrangements and outright loans.